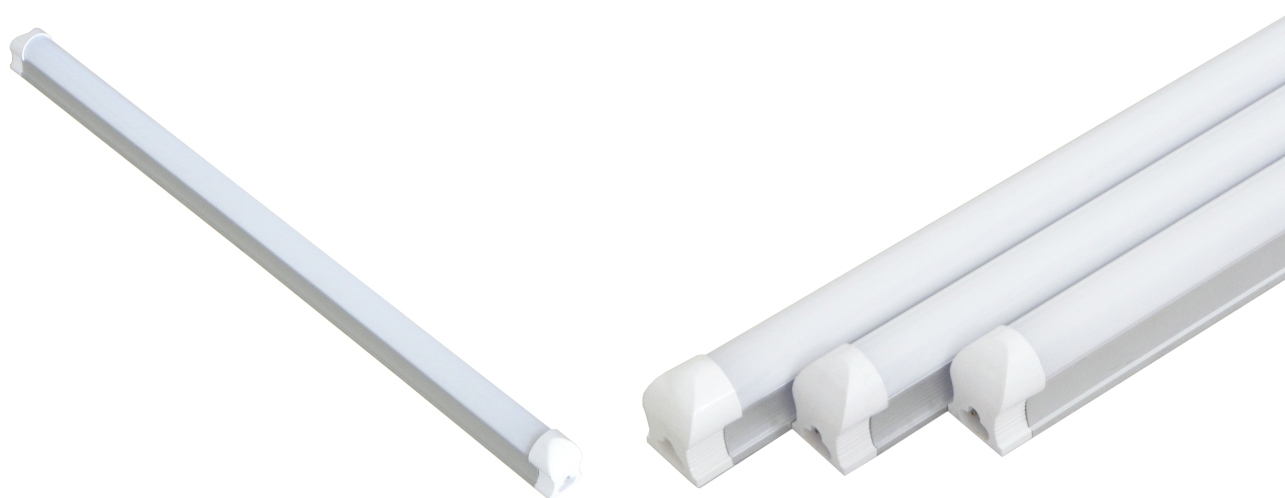


T8 BATTENS

CL-T8C Series



Description

Inno LED's T8 Batten tube lights are rugged and designed for heavy duty usage. They offer upto 50% more efficiency than regular tube lights. These simple and easy to install LED Tube Light Fixtures are the undoubted eco-friendly champion for industrial tube replacement purposes. Available in 1', 2' and 4'.

Features:

- sleek looks
- upto 50% power saving vs T8 tube lights
- frosted cover- glare free illumination
- 1', 2', 4' T8 luminaires
- colors - cool white

Highlights:

- everlight LED 120 Lm/W
- metal PCB
- full bridge driver
- extruded heavy duty aluminium heatsink

Specifications					
Models	CL-T8C-1W-5W	CL-T8C-2W-9W	CL-T8C-4W-18W	CL-T8C-4W-22W	CL-T8C-4W-40W
Length	4'				
Power Consumption	5W	9W	18W	22W	40W
Lumens	>480	>860	>1730	>2110	>3840
Operating Voltage	210 ~ 270 VAC, 50 Hz; eff. >80%				
Power Factor	≥ 0.95				
Color Temperature	6500 ~ 6700 K (CRI - >80%)				
Beam Angle (typical)	> 120°				
Lifetime (typical)	50,000 hours				
Operating Temperature	-20°C to 60°C				
Size (mm)	275*30*35	600*30*35	1200*30*35		