

NEW

Phase-sequence/ Phase-loss Relay Fixed Asymmetry K8DS-PH1/K8AK-PH1

Easy to set, Slim 3-phase Monitoring.



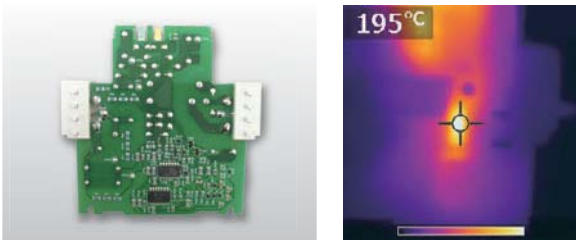
OMRON's unique reliable design that contributes to reduce maintenance cost

Reliable, Safe and Long-life

Reliable, safe operation is possible: Adoption of advanced power design technology prevents overheat caused by high frequency noise effects. Internal electrolytic capacitor gets less deterioration because there will be no heat caused by high-frequency noise. This realized long-life and contributes to reduce your maintenance cost.

Conventional General Phase-sequence/Phase-loss Relay

Conventional General Power Design Technology
 (capacitor voltage-dividing system)

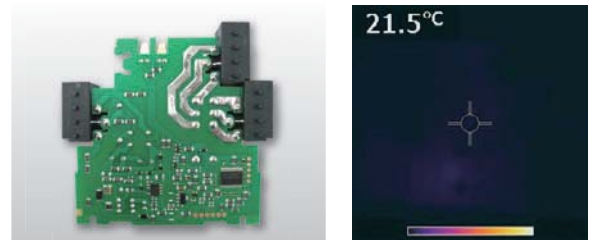


*This is a thermography from our inverter test result

Conventional general Phase-sequence/Phase-loss Relays adopt capacitor voltage-dividing circuit system. The relays get heated due to effects including inverter noise.

K8AK / K8DS

Advanced Power Design Technology
 (Switch Mode system)



*This is a thermography from our inverter test result

All of the models of K8AK series and K8DS-PH adopted expensive switch mode power supply system. They do not get heated due to effects including inverter noise (under a condition when 300V P-P noise is applied) for reliable and safe operation.

Standard marks



realizing

Contribute to reduce number of stock models

A single K8DS/K8AK can support industrial voltages all around the world.

Supply voltage: 200 to 480VAC (free)

Ordering Information

K8AK-PH / K8DS-PH (Phase-sequence Phase-loss Relay)

| Model | Rated input voltage* | Output relays | Function | Dimensions |
|----------|----------------------|---------------|-----------------------------------------------------------------------------------------------------------|---------------|
| K8DS-PH1 | 200 to 480 VAC | 1c x 1 | Phase sequence and phase loss monitoring (*Supports phase loss detection when the motor is operating.) | 17.5x80x73mm |
| K8AK-PH1 | 200 to 480 VAC | 2c x 1 | | 22.5x90x100mm |

* The power supply is shared with the rated input voltage.

Ratings

| | | |
|----------------------------------------------|-----------------------------------------------------------------|----------------------|
| Model | K8DS-PH1 | K8AK-PH1 |
| Output relays | 1c x 1(NC operation) | 2c x 1(NC operation) |
| Reversed phase and phase loss operating time | 0.1 s max. | |
| Reset method | Automatic reset | |
| Indicators | Power (PWR): Green, Relay output (RY): Yellow | |
| Output relay ratings | Rated load Resistive load 5 A at 250 VAC 5 A at 30 VDC | |
| Ambient operating temperature | -20 to 60°C (with no condensation or icing) | |
| Mounting | Mounts to DIN Track. | |

Line up of the K8AK/K8DS Series

K8AK/K8DS series has a selection of Phase-sequence/ -loss relay, Phase-asymmetry, Voltage-monitoring relay, Current-monitoring relay, Conductive level controller, and Temperature monitoring relay.

| Detection function | For monitoring | | | | | | | | | | | |
|--------------------|-----------------|-------------|--------------|---------|---------|------------------|-------------------------------|------------------|-------------------------------|---------|--------------------------|--------------------|
| | For Three-phase | | | | | For Single-phase | | | | | Conductive level control | Temperature alarms |
| | K8DS-PH | K8AK-PH | K8AK-PA | K8AK-PM | K8AK-PW | K8AK-VS | K8AK-VW | K8AK-AS | K8AK-AW | K8AK-LS | K8AK-TH | |
| Phase-sequence | Yes | Yes | Yes | Yes | — | — | — | — | — | — | — | — |
| Phase-loss | Yes | Yes | Yes | Yes | — | — | — | — | — | — | — | — |
| Over voltage | — | — | — | Yes | Yes | Yes (Switchable) | Yes (Simultaneous Monitoring) | — | — | — | — | — |
| Under voltage | — | — | — | Yes | Yes | Yes (Switchable) | — | — | — | — | — | — |
| Phase-asymmetry | Yes (Fixed) | Yes (Fixed) | Yes (Adjust) | — | — | — | — | — | — | — | — | — |
| Over current | — | — | — | — | — | — | — | Yes (Switchable) | Yes (Simultaneous Monitoring) | — | — | — |
| Under current | — | — | — | — | — | — | — | Yes (Switchable) | — | — | — | — |
| Liquid level | — | — | — | — | — | — | — | — | — | Yes | — | — |
| Temperature alarms | — | — | — | — | — | — | — | — | — | — | — | Yes |
| Output relay | 1c | 2c | 1c | 1c x 2 | 1c x 2 | 1c | 1c x 2 | 1c | 1c x 2 | 1c | 1c | 1c |

*For details, refer to the K8AK/K8DS Series datasheet (Cat. No. N172-E1-02).



Authorised Distributors:-

Intech Systems Chennai Pvt. Ltd

S-2, Guindy Industrial Estate, Chennai-600 032

Ph: +91 44 4353 8888 Mob: Fax: 044 4353 7888

E-mail: info@intechchennai.com Website: www.intechchennai.com