

ER-X□ Discharge Part Protective Cover ER-XACVR

CMJECK-ERXACVR No.0054-66V

Thank you for purchasing Panasonic products. Read this Instruction Manual carefully and thoroughly for the correct and optimum use of this product. Kindly keep this manual in a convenient place for quick reference.

1 Outline

- This product is the protective cover attached to the Area ionizer **ER-X□**. Electric shocks from the discharge needles of the **ER-X□** can be prevented.

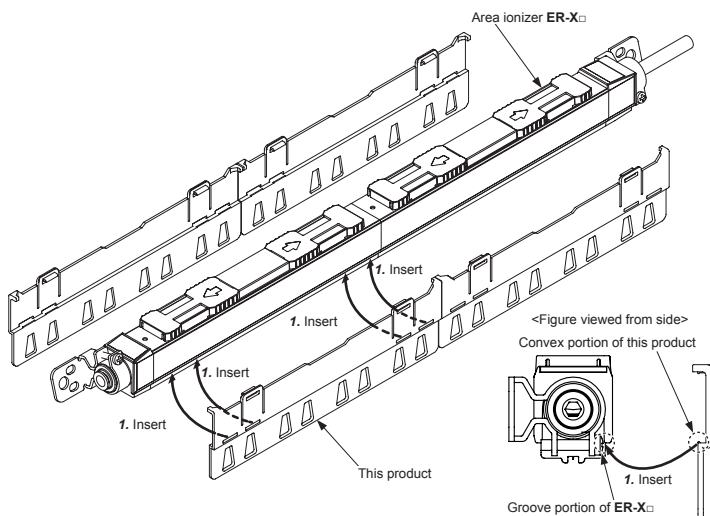
2 Installation

- As shown below, the quantity required for this product differs with the **ER-X□**.

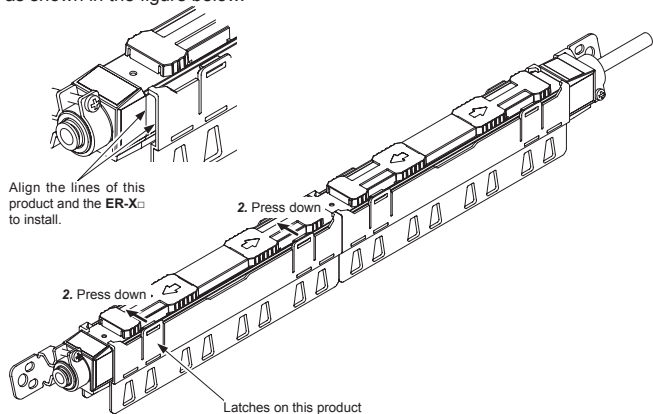
Model No. of area ionizer	Number of sets (2 covers/set)
ER-X016	1 set
ER-X032	2 sets
ER-X048	3 sets
ER-X064	4 sets

How to install

1. Insert the convex portion on the side of this product into the grooves on the sides of the **ER-X□**.

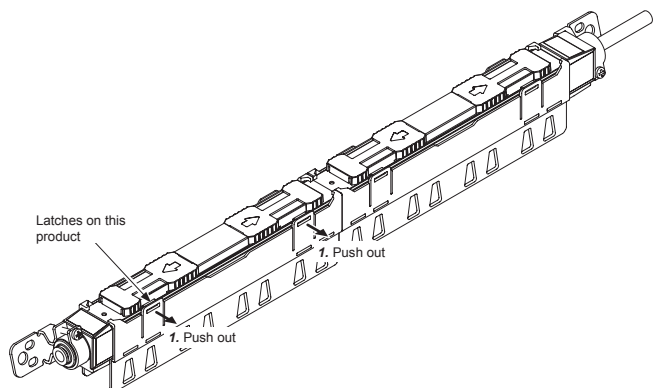


2. Press down on the latches in 2 locations on the upper portion of this product against the **ER-X□**. When installing, align the lines of this product and the **ER-X□** as shown in the figure below.



How to remove

1. Push the latches in 2 locations on the upper portion of this product towards the outside to remove.



3 Specifications

Product name	ER-X□ discharge part protective cover
Model No.	ER-XACVR
Vibration resistance (Note)	10 to 150Hz frequency, 0.75mm amplitude for 2 hours in each of X, Y, Z directions
Shock resistance (Note)	Resistance 100m/s ² (approx. 10G), 2 times in each of X, Y, Z directions
Material	Polycarbonate
Weight	Approx. 20g (1 set)

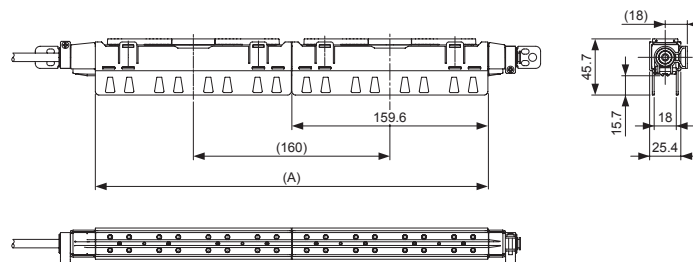
Note: Specification when attached to the **ER-X□**.

4 CAUTIONS

- Be sure to turn OFF the power before installing / removing this product to / from the **ER-X□**.
- The discharging condition changes when this product is attached to or removed from the **ER-X□**.
In order to operate the check function of the controller **ER-XC02** normally, be sure to perform the set up after this product and the **ER-X□** is installed.
- The CHECK indicator (orange) of the **ER-XC02** may light up when this product is attached to the **ER-X□**. In this case, turn the frequency setting switch or the ion balance setting switch to light out the CHECK indicator (orange) then perform the set up.

5 DIMENSIONS (Unit: mm)

- When attached to **ER-X□**



Model No.	A
ER-X016	159.6
ER-X032	319.6
ER-X048	479.6
ER-X064	639.6