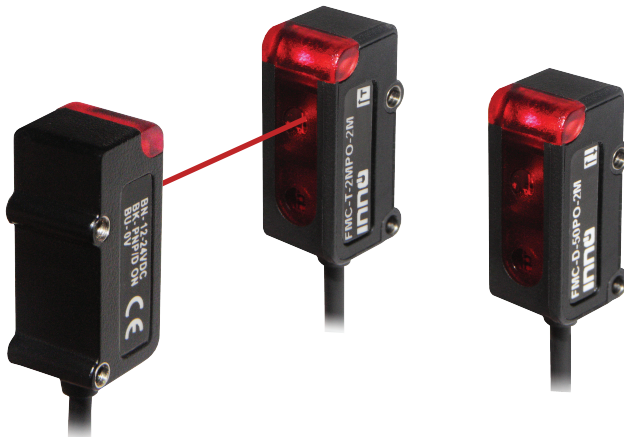


# Miniature Photoelectric Sensor

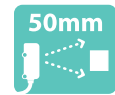
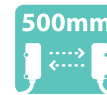
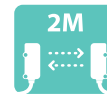
Side-view Cube Type

# FMC



## SALIENT FEATURES

- ◆ Compact ABS Housing
- ◆ 50, 500, 2000mm sensing
- ◆ IP-64, Shock Resistant - 100G
- ◆ Through beam & Diffuse Types
- ◆ Power & Output Indication LEDs



## Model Number Legend

**FMC** -   -   -   -  

1      2      3      4      5

### 1. Series

FMC

### 2. Type

T: Through Beam

D: Diffuse Reflective

### 3. Sensing Distance

50: 50 mm

500: 500 mm

2M: 2 Meter

### 4. Output

NO: NPN - NO

PO: PNP - NO

### 5. Connection

2M: 2m Cable

M12J3: M12 Junction Connector with 0.3m extension

### #. Accessories included

Mounting Screws : 1 Set

### Example:

FMC-T-50PO-2M

FMC Series - Through Beam Type - 50mm Sensing Distance, PNP NO Output - 2m Cable

### NOTE:

Contact us for models not shown in catalogue.

Connector cables are sold separately; look in CC series catalogue for the same ([www.inno.sg/cc](http://www.inno.sg/cc)).

## Product Highlights



### ◆ Ultra Compact!!!

The FMC series realizes the need for compact, yet durable photo-electric sensors for use in the automotive, electronics and fab industries.

The sensors compact dimension make mounting in tight spaces easy.

### ◆ Shock-proof

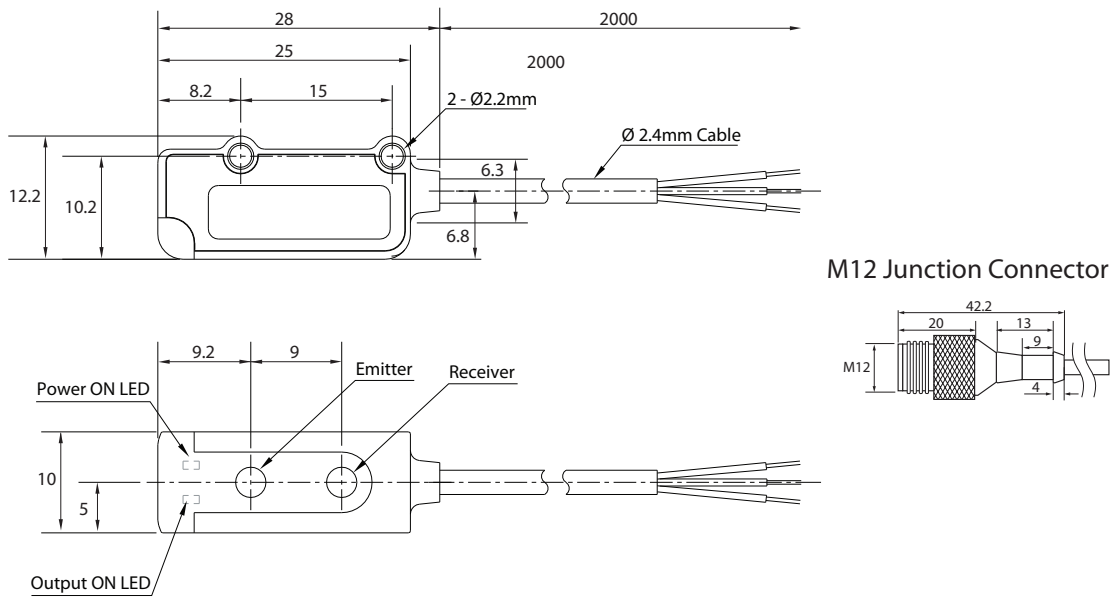
The sensor housing is made of ABS with a PC or PMMA lens. The SMD soldered components in the sensor is rated for use in harsh environments with high levels of vibration and shock. The FMC series have a shock rating of 100Gs.

## Ratings and Specifications

Sensing Type		Through Beam				Diffuse Reflective	
Output Type		NPN	PNP	NPN	PNP	NPN	PNP
Models	Cable	FMC-T-2MNO-2M	FMC-T-2MPO-2M	FMC-T-500NO-2M	FMC-T-500PO-2M	FMC-D-50NO-2M	FMC-D-50PO-2M
	Junction Connector	FMC-T-2MNO-M12J3	FMC-T-2MPO-M12J3	FMC-T-500NO-M12J3	FMC-T-500PO-M12J3	FMC-D-50NO-M12J3	FMC-D-50PO-M12J3
Sensing Distance		2 Meters		500 mm		50 mm	
Sensing Area		Opaque min. 5mm dia.				100 x 100mm (Opaque) at 50mm	
Light Source		Infrared LED 940nm					
Response Time		1ms					
Operation Mode		Dark ON				Light ON	
Supply Voltage		12 - 24 VDC (Ripple Max 10%)					
Current Consumption		max. 30mA				max. 20mA	
Protection Circuits		Reverse polarity protection; Output short circuit protection					
Control Output		NO - NPN or PNP open collector output (depending on model)					
Control Output Rating		Load Voltage: max. 30 VDC; Load Current: max 100mA					
Operation Indication		Power & Output: Red LEDs					
Shock Resistance		100 G- X,Y, Z three directions					
Dielectric Strength		1000VAC at 50/60 Hz for 60 Sec.					
Insulation Resistance		min. 20MΩ at 500VDC					
Environmental Illuminance		Sunlight: 10,000 lux, Lamp: 3,000 lux					
Ambient Temperature		Operation: -15° ~ 45°C; Storage: -10° ~ 55°C (non- freezing; non- condensing)					
Ambient Humidity		Operation: 35 ~ 85% RH; Storage: 35 ~ 95% RH (non- condensing)					
Protection Class		IP64					
Weight		aprox. 40g (per piece, ie. Through Beam models aprox. 80g)					
Material		Housing: ABS, Lens: PMMA or Eqv.					

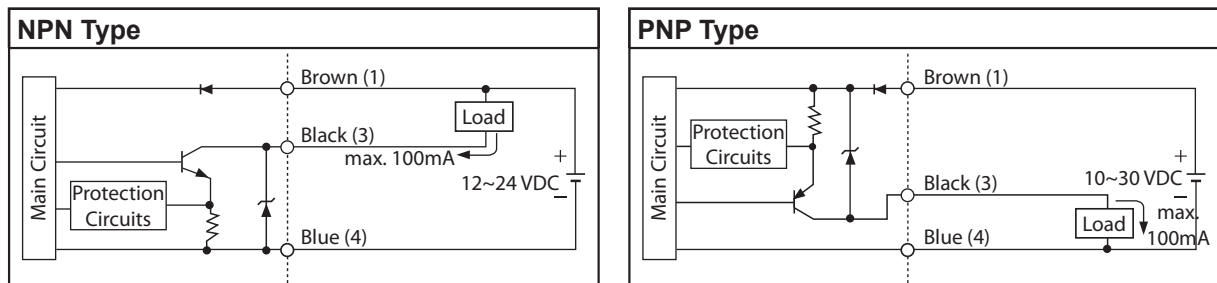
# Sensor Dimension Drawing

FMC

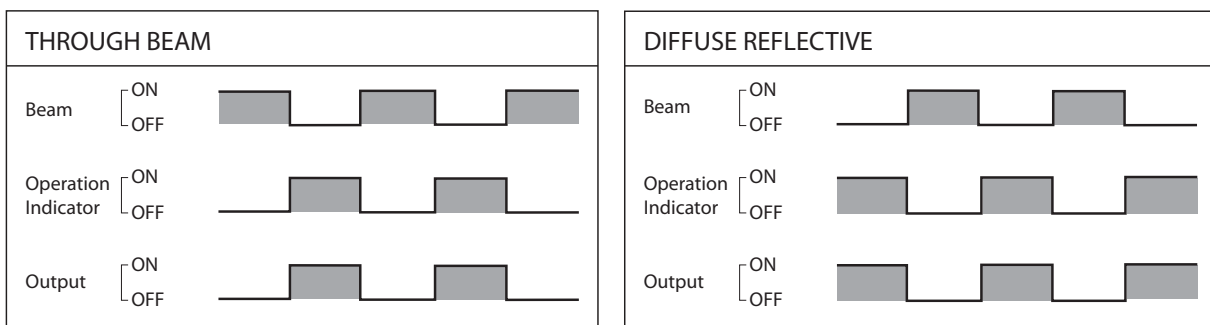


All dimensions are in mm

# Control Output Diagram



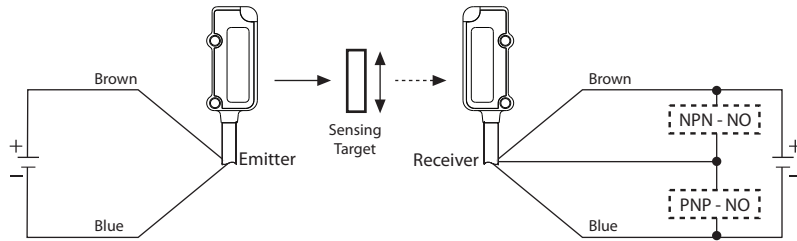
# Operation Type



## Connection

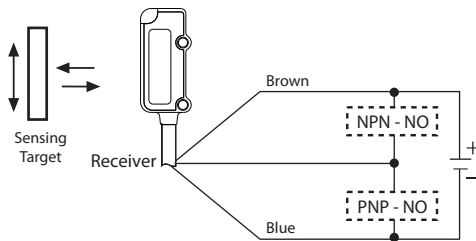
### • Cable Type

#### ◆ Through Beam



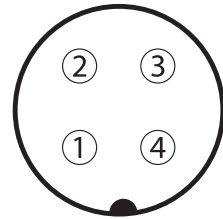
Brown (1) : DC 10~30V  
 Blue (2) : 0V  
 Black (3) : Control Output

#### ◆ Diffuse Reflective



### • M12 Junction Connector

#### ◆ All Types



Exclusively Represented by:

Intech Systems Chennai Pvt Ltd  
 S-2, Guindy Industrial Estate  
 Chennai - 600 032. Ph: 4353 8888  
 Email: [info@intechchennai.com](mailto:info@intechchennai.com)

**INNO**<sup>TM</sup>  
[www.inno.sg](http://www.inno.sg)

© INNO, Rights Reserved  
 In the interest of continuous product improvement  
 specifications are subject to change without notice

Cat. No. FMC-B12

[www.inno.sg/fmc](http://www.inno.sg/fmc)