



for a greener tomorrow

General-Purpose AC Servo MELSERVO-J4 Series Linear Servo Motor LM-AJ Series Servo Amplifier MR-J4-_B/A-RJJ051 (200 V AC)

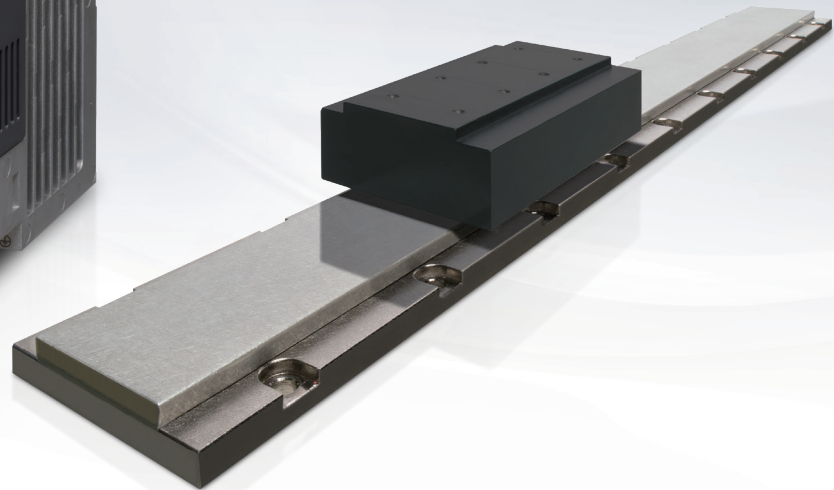
September, 2019

New Product Release
SV1909-1E



MITSUBISHI SERVO AMPLIFIERS & MOTORS

MELSERVO-J4

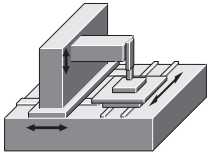
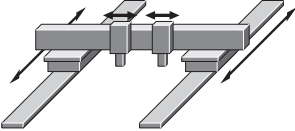
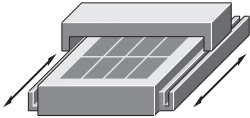


Sophisticated Performance

- Maximum speed: 2.0 to 6.5 m/s
- Maximum thrust: 214.7 to 1409.1 N
- Small-size and high-thrust linear servo motors
- High-accuracy tandem synchronous control by an SSCNET III/H-compatible controller

Application Examples

- Linear servo motors enable tandem configuration and multi-head configuration machines.

<p>Machine tools XYZ stage</p> 	<p>Semiconductor/FPD manufacturing systems Electrical parts assembling/manufacturing systems</p> 	<p>Screen printing systems and large FPD coaters</p> 
--	--	--

Model Designation

Linear servo motors

Primary side: coil

LM - A J P 1 B - 0 7 K - J S S 0

(1) (2) (3) (4)
Primary side (coil)

(1)

Symbol	Width (nominal) [mm]
1	50
2	75
3	100
4	125

(2)

Symbol	Length (nominal) [mm]
B	96
D	176

(3)

Symbol	Continuous thrust [N]
07	68.1
12	117.0
14	136.2
17	174.5
22	223.4
23	234.0
35	348.9
45	446.8

(4)

Symbol	Maximum speed [m/s]
M	2.0
N	2.5
R	3.5
S	4.0
T	5.0
K	6.5

Secondary side: magnet

LM - A J S 1 0 - 0 8 0 - J S S 0

(1) (2)
Secondary side (magnet)

(1)

Symbol	Width (nominal) [mm]
1	50
2	75
3	100
4	125

(2)

Symbol	Length (nominal) [mm]
080	80
200	200
400	400

Servo amplifiers

MR - J 4 - 4 0 B - R J J 0 5 1

(1) (2)

(1)

Symbol	Rated output [kW]
40	0.4
70	0.75

(2)

Symbol	Interface
B	SSCNET III/H
A	General-purpose

LM-AJ Series Specifications

Linear servo motor model	LM-AJ	P1B-07K -JSS0	P1D-14K -JSS0	P2B-12S -JSS0	P2D-23T -JSS0	P3B-17N -JSS0	P3D-35R -JSS0	P4B-22M -JSS0	P4D-45N -JSS0	
Linear servo motor model	LM-AJ	S10-080-JSS0		S20-080-JSS0		S30-080-JSS0		S40-080-JSS0		
Secondary side (magnet)	LM-AJ	S10-200-JSS0		S20-200-JSS0		S30-200-JSS0		S40-200-JSS0		
		S10-400-JSS0		S20-400-JSS0		S30-400-JSS0		S40-400-JSS0		
Compatible servo amplifier model	MR-J4-	40B/A -RJJ051	70B/A -RJJ051	40B/A -RJJ051	70B/A -RJJ051	40B/A -RJJ051	70B/A -RJJ051	40B/A -RJJ051	70B/A -RJJ051	
Cooling method		Natural cooling								
Thrust	Continuous	[N]	68.1	136.2	117.0	234.0	174.5	348.9	223.4	446.8
	Maximum	[N]	214.7	429.4	369.0	738.1	550.2	1100.4	704.5	1409.1
Maximum speed	[m/s]	6.5	6.5	4.0	5.0	2.5	3.5	2.0	2.5	
Magnetic attraction force	[N]	378.8	757.6	651.1	1302.1	970.7	1941.4	1242.9	2485.9	
Rated current	[A]	2.3	4.6	2.3	4.6	2.3	4.6	2.3	4.6	
Maximum current	[A]	9.0	18.0	9.0	18.0	9.0	18.0	9.0	18.0	
Mass	Primary side (coil)	[kg]	0.6	1.1	0.9	1.7	1.2	2.3	1.5	2.9
	Secondary side (magnet)	[kg]	0.26 (80 mm)		0.40 (80 mm)		0.56 (80 mm)		0.70 (80 mm)	
		[kg]	0.65 (200 mm)		1.00 (200 mm)		1.40 (200 mm)		1.70 (200 mm)	
		1.30 (400 mm)		2.00 (400 mm)		2.80 (400 mm)		3.50 (400 mm)		

* Please contact your local sales office for more details.

MITSUBISHI ELECTRIC CORPORATION

HEAD OFFICE: TOKYO BUILDING, 2-7-3, MARUNOUCHI, CHIYODA-KU, TOKYO 100-8310, JAPAN
NAGOYA WORKS: 1-14, YADA-MINAMI 5, HIGASHI-KU, NAGOYA, JAPAN