

Human Machine Interface

Advanced Function Type

OT



SALIENT FEATURES

- ◆ 4.3", 7", 10", 15"
- ◆ Multiple COM Ports
- ◆ 128 MB Flash Memory
- ◆ Multiple Fieldbus Options
- ◆ Horizontal / Vertical Displays
- ◆ IP65 Front Panel; AC/DC Models
- ◆ LED Backlit, 65k Hi- Color Display

Model Number Legend

OT-□□□□-□
1 2 3 4 5 6

1. Series

OT

2. Type

- 4: 4.3" Regular Type
- 7B: 7" Basic Type
- 7: 7" Regular Type
- 10: 10" Regular Type
- 15: 15" Regular Type

3. Network Port

- 0: None
- D: DeviceNet
- E: Ethernet I/P
- C: EtherCAT
- P: Profibus DP

4. Option

- 0: None
- L: LAN
- S: LAN + Sound Input & Output, 3 DI + 3 DO

5. Software

- R: OT Builder
- E: OT Builder Plus

6. Power Supply

- D: 12 ~ 36 VDC
- A: 90 ~ 250 VAC

Example:

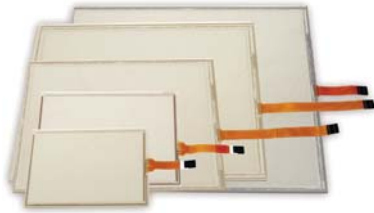
OT-7DSR-A

OT Series - 7" Regular Type, DeviceNet, LAN + Sound Input & Output with 3DI+3DO, OT Builder - 90-250VAC Input Supply

NOTE: Contact us for models not shown in catalogue.

Product Highlights

OT



◆ 4 Wire Resistive Touch Screen

The HMI incorporates a 4 wire Resistive Touch Screen display across all models. The Resistive touch display is sensitive to all objects and is durable.

◆ Multiple Standard Ports!

The OT series features as 1 Ethernet, 1 USB, 1 SD Memory Card (except OT-7B_ optional) & 2 Serial Ports as standard.



◆ Powerful Processor

Fast boot times and a fast and responsive user experience is provided with the utilization of more powerful processors. The HMI uses ARM 11 clocking 533MHz for 4.3" & 7" Basic models and ARM CORTEX-A8 clocking 667MHz on its 7", 10" & 15" models.

◆ 128 MB Internal Memory!!!

Large memory of 128MB Flash, 128/256MB SDRAM for added memory. Now you will never have to compromise on the no. of screens or quality of images due to memory constraint.



◆ Tilting Display

Vertical and Horizontal mounting in the panel is possible along with tiltable display for the 2 positions.



◆ High Resolution

The HMI features a High color (65,000 colors), high resolution TFT LCD panel. This makes the display of even small images and text crisp.



◆ Windows CE

Advanced and reliable Microsoft WinCE 6.0® platform with more features for efficient and sophisticated control solutions.



◆ Multiple Fieldbus Options

Advanced Networking and Communication options are made available on the OT series. The HMI supports MODBUS protocol on all models by default. Profibus DP, DeviceNet, Ethernet I/P, EtherCAT communication options are also available.

◆ USB K/B, Mouse Support.

Advanced and reliable Microsoft WinCE 6.0® platform with more features for efficient and sophisticated control solutions.



◆ LED Backlight

LED backlit display ensures a bright and uniformly lit screen that is readable even in sunlight. LED backlighting reduces the power consumption.

◆ Splash Proof

The front bezel of the IPC is IP65 compliant making it resistant to minor water sprays and dust proof.

OT Builder Features

OT

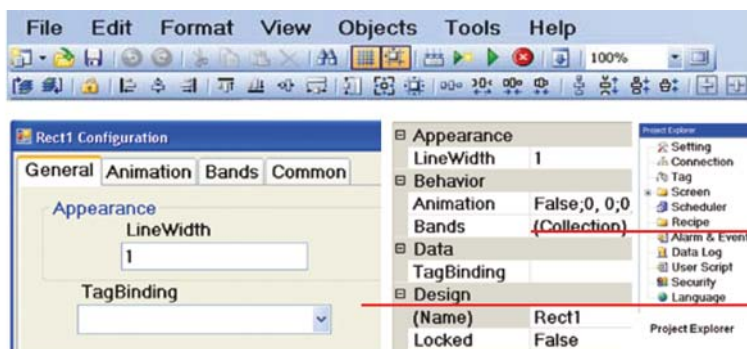
- ◆ Free, powerful and friendly HMI editing software
- ◆ 2 editing styles in both GUI wizard and Property grid
- ◆ Vector objects of Meters, Sliders, Digital LED, Check boxes, Combo boxes, Number Up/ Down, etc.
- ◆ 112 basic symbols in high resolution vector format, some in 6 changing colors, flipped and rotatable in 4 directions in design time
- ◆ Basic symbols support moving and 32 band run-time animation on bg color, visibility, flip and rotation
- ◆ Optional **Symbol Factory** with 4,000 symbols, flipping, rotating in 4 directions, change color in design time
- ◆ **Symbol Factory** control allows 50 band run-time animation, each band in different colors and blinking
- ◆ Picture box to import pictures in .bmp, .wmf, .jpg, .gif and .png formats
- ◆ Dynamic objects like animated bar graph, button, bit lamp, 32-bit word lamp, drawing tools, etc.
- ◆ Drawing tools like rectangle, ellipse, etc. upto a maximum of 32 bands, each band with visibility control, filling color and blinking
- ◆ Drawing tools like rectangle, ellipse, etc. with run-time animation like filling, moving and sizing
- ◆ Many PLC drivers supported in both Serial & Ethernet ports via OPC server
- ◆ Data exchange between two different PLCs as a gateway
- ◆ Diagnostic tools for drivers like OPC server and client to test communication between HMI and PLC directly
- ◆ I/O poll groups, different scan rates for PLC tags, option of scanning tags always or only tags on active page
- ◆ Retentive and non-retentive internal variables for mathematical calculation
- ◆ 3 types of screens in Page, Template and Pop-up
- ◆ The Scheduler triggers actions at specific time or intervals
- ◆ Recipe management to create data elements and data records in design time
- ◆ Recipe viewer to edit data records and transfer setpoints from HMI to PLC and vice versa in run-time
- ◆ Real-time alarms in 7 types, historical alarms and alarm management in maximum 9 groups
- ◆ Alarm banner to display the latest alarm in single line
- ◆ Real time trends and historical trends, with maximum 24 pens for each component
- ◆ Bit-wise alarms for integer tag received from PLC
- ◆ Data stored in internal memory or optional SD card
- ◆ Data logging by 4 methods, 2 types and 10 rates
- ◆ Data acquisition software Historical Viewer to view historical data and alarms on PC
- ◆ Security management used for maximum users divided by -authority levels

OT Builder Features

- ◆ Script/ Macro programmed in C language for mathematical and logical calculation
- ◆ Run-time user administration done by user-view component
- ◆ Online emulation to test application program by simulating it on PC without connecting with PLC
- ◆ Offline simulation to test application program by simulating it on PC without connecting with PLC
- ◆ Copy screens between projects to save developing time
- ◆ Copy/paste animation for drawing tools like rectangle, ellipse etc., to save developing time
- ◆ Project compiler to verify the application under development before downloading to HMI
- ◆ Message libraries via Word Lamp with animations to display various messages based on different values
- ◆ Advanced buttons with animation in 3 kinds of actions namely clicked, pressed and released with timing
- ◆ Bit-wise animation used with bit lamp for integer tag to show status of integer tag received from PLC
- ◆ Multiple sessions to open projects in design time on PC
- ◆ Project explorer and Tool box to quickly view hierarchy of all objects in software
- ◆ Flexible to call many system functions from buttons, events, schedulers, scripts, etc.
- ◆ To download application program efficiently from PC to HMI via ethernet port or via USB

OT Builder Highlights

◆ Editing tools & style



Edit properties of objects via fast and user friendly GUI Wizard or Property grid similar to Visual Studio® environment.

GUI Wizard

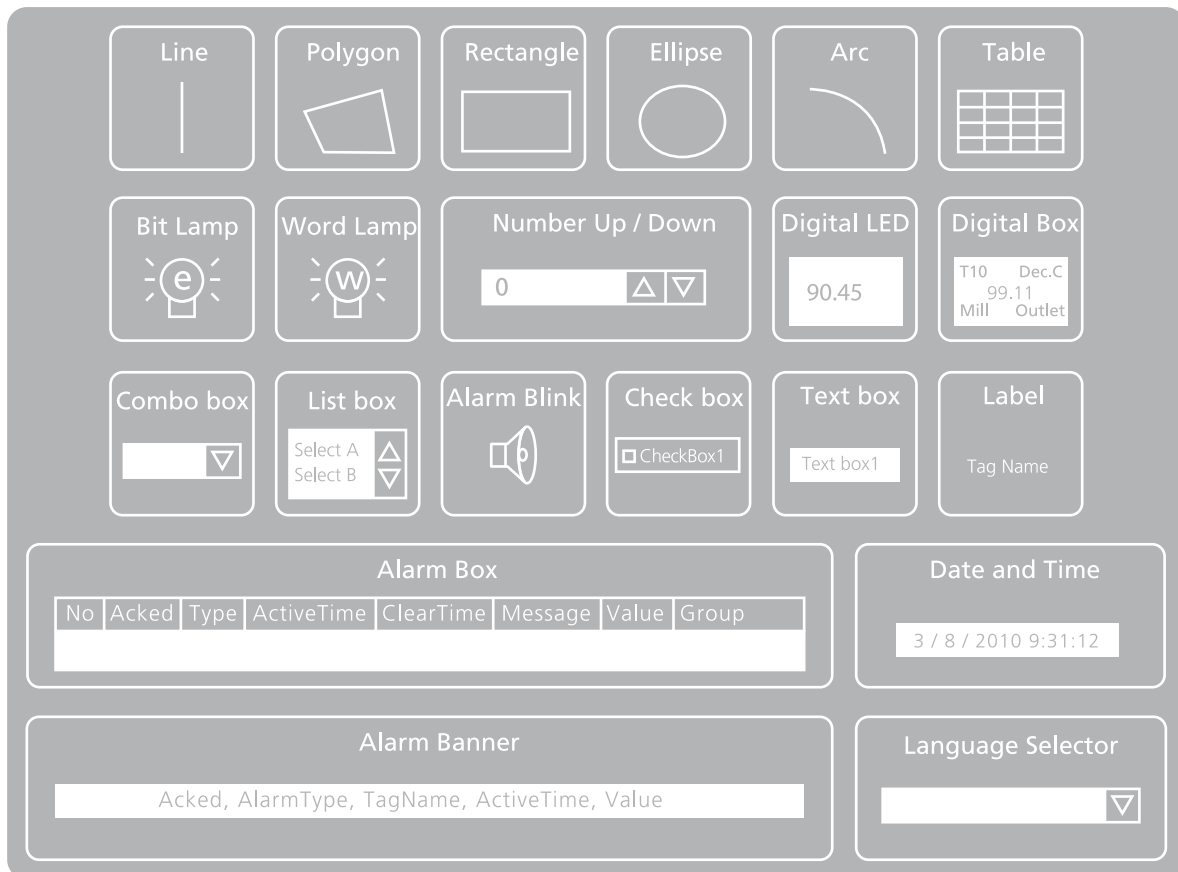
Property grid

◆ Tabbed Pane



Quickly retrieve tools in project explorer using tabbed pane. For example, once user has edited three pages, tag database, alarms, scheduler, all these are available in tabbed pane for quick retrieval from Main Window afterwards.

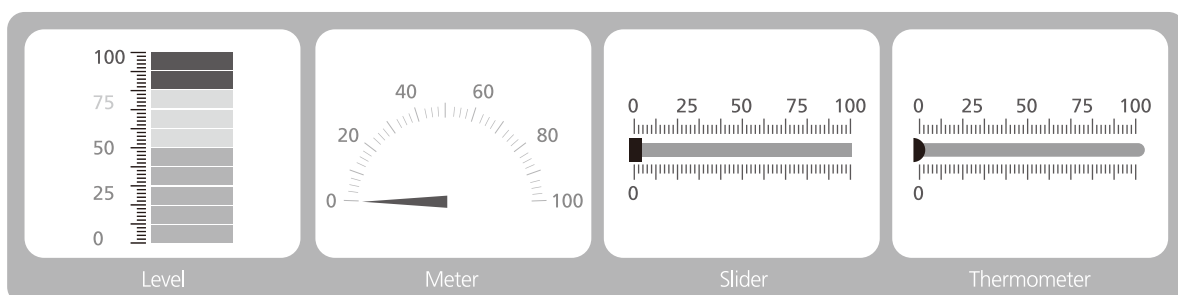
◆ Basic Objects



Line, Polygon, Rectangle, Ellipse, Arc, Table, Numerical Up/ Down, Digital LED, Digital box, Text box, Label, Date/ Time label, Alarm box, Alarm banner, Alarm blink, Button, Bit lamp, Word lamp, Check box, Combo box, List box, Recipe View, User view and Language selector.

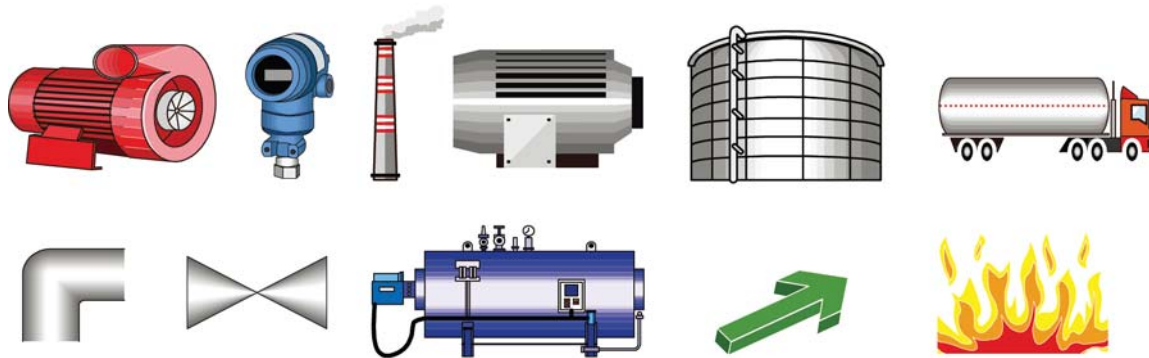
◆ Enhanced Objects

Level, Meter, Slider, Thermometer, Bar box, Scale, Historical trends, Real time trends, Picture box.



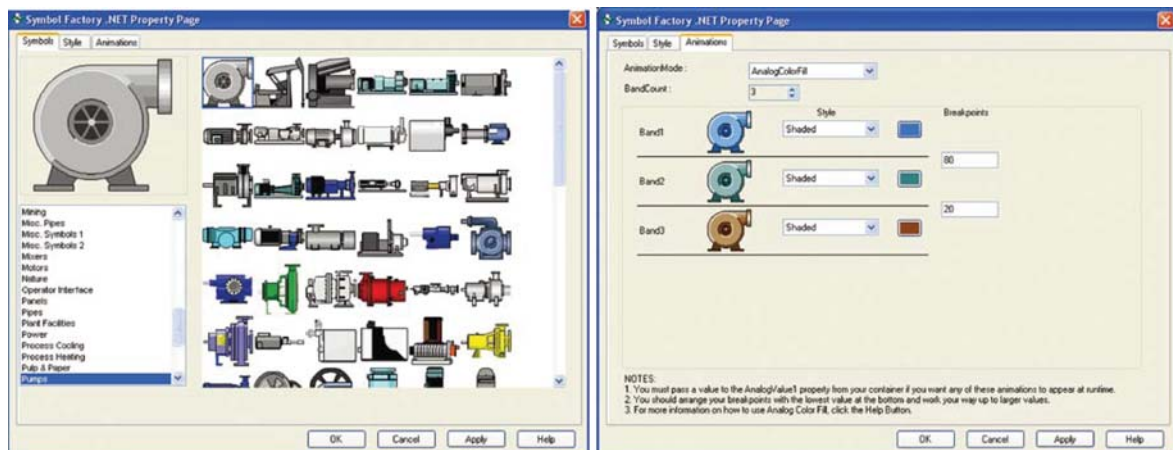
◆ Basic Symbols

Free basic symbols include 112 different ones divided by 18 popular categories.
 All symbols are in vector format and gives a losless clear image at any size and occupies less memory.
 Symbols of 10 categories are made in 6 colors of red, green, yellow, blue, brown and grey.
 Transparent or color background can be selected for any symbol.
 Runtime animation: moving, maximum 32 bands, animationon background color, visibility, flipped and rotated in 3 directions, linked to picture file.



◆ Extended Symbols from **SYMBOL FACTORY**

Symbol Factory offers over 4,000 high-resolution symbols with run-time animation.
 Transparent or color background can be selected for any symbols.
 All symbols are made in high resolution and .net components to occupy less memory.
 Runtime animations: maximum 50 bands, each band covering foreground color or blinking in different styles of shade, solid or visibility.
 In OT Builder, only 1st symbol in each category will be selectable.
 In OT Builder +, all symbols will be selectable as **Symbol Factory** licence is activated.



OT Builder Highlights

◆ Scheduler Types

Countdown	to trigger an action one time after elapse of time
Repeat countdown	to trigger an action repeatedly at certain time interval
Daily	to trigger an action at specific time daily
Weekly	to trigger an action at specific time weekly
Monthly	to trigger an action at specific time monthly



◆ Recipe Administration

Run-time

User friendly recipe viewer
Add data records
Edit data records
Save and delete data records
Write data records from HMI to PLC

Read data records from PLC to HMI
Select recipe

Design-time

Create recipe elements
Add data records



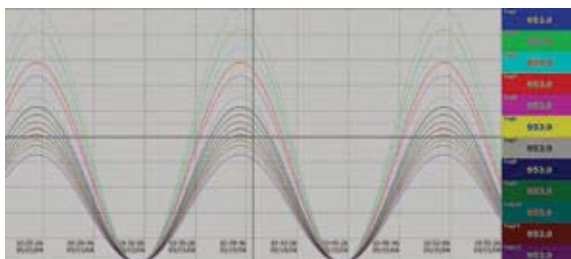
◆ Alarms- real time, historical alarms

Alarm setpoint reference	constant or tag
Hysteresis	available
Alarm types	Hi, Low, Hi HI, Low Low, Dev+, Dev-
Alarm control functions	acknowledge, clear dump, clear, navigation bet. pages
Job Types	log alarm, log auto ack. alarm and log event
Customized alarm messages	possible



◆ Data Aquisition Software - *Historical Viewer*

Historical data and events are stored in internal memory or SD Card first, then downloaded to USB Pen drive. The PC software Historical Viewer is used to view historical data & events on USB stick.



- * display historical trend
- * display historical alarms/events
- * display historical values on table
- * search data at a specific time, time period, event/alarm and tag wise
- * view trends both horizontally and vertically
- * zoom out & zoom In
- * display options as x sec., min./dot, x min., hrs., days, weeks, months/page
- * display white or black background
- * print trend view, event/alarm list & Tag values
- * export data and alarms/events to CSV files.

OT Builder Highlights

OT

◆ Security

Number of users	100
Number of levels	9
Password expiry period	define the number of days/ unlimited
Prevent operators from unauthorized access to controls and data entry.	
Run-time user administration	available



◆ Online Simulator

It is used to test HMI project on the PC by connecting it with PLC directly. The online simulating software can last only for 2 hours duration at a time.

◆ Offline Simulator

It is to test HMI project offline on the PC without having to connect to the PLC. It is possible to enter tag values through a tabular column, simulate tag values and check the behaviour of objects

◆ Button Function Editor

Advanced buttons with 3 kinds of functions - clicked, pressed and released with timing.	
Hold time to stay command by predefined time after clicking button and repeat time for pressed button.	
Page control functions	Navigate to various pages- 1st, next, last, previous, by number, pop-up
Alarm control functions	dump, clear, ack., move to 1st page, last page, page up, page down
Historical trend control	zoom in/ out, all, move to 1st page, previous page, next page, last page
Data log control	start/ stop data logging, dump, clear
Scheduler control	start/ stop at specific time
On/ Off	turn bit on, turn bit off, toggle bit
Math	set/ add/ subtract value to tag, copy tagB to tagA and tagB on tagA, subtract tagB from tagA, swap tagA for tagB
Others	log in/ out, shut down, audio functions, recipe functions

◆ Script/ Macro Supported Functions (C Program)

System functions	ack. alarms, start/ stop, scheduler, etc.
Math functions	Trigonometric, Log, Exp., Round, Power, etc.
Arithmetic functions	addition, subtraction, multiply, division, remainder
Logical functions	and, or, true, false, not, etc.
Shift functions	left, right
Relational functions	if, else
Iteration functions	while, for
Jump functions	break, continue

◆ Project Download

via. Ethernet port or USB stick.



◆ Multiple Sessions

Two projects can be opened simultaneously on PC and copy screen from project 1-2. It saves programming time.

Ordering Information

OT

Screen Size	Network Ports	Optional Port	Software	Power Supply	Model No.
4" Regular	None	None	OT Builder	12 ~ 36VDC	OT-400R-D
	None	LAN			OT-40LR-D
	DeviceNet				OT-4DLR-D
	Ethernet I/P				OT-4ELR-D
	EtherCAT				OT-4CLR-D
	Profibus DP				OT-4PLR-D
	None		None		OT Builder +
	None		OT-40LE-D		
	DeviceNet		OT-4DLE-D		
	Ethernet I/P		OT-4ELE-D		
	EtherCAT		OT-4CLE-D		
	Profibus DP		OT-4PLE-D		
7" Basic	None		LAN	OT Builder	90 ~ 250VAC
		OT Builder +		OT-7B0LE-D	
		OT Builder		OT-7B0LR-A	
		OT Builder +		OT-7B0LE-A	
7" Regular	None		OT Builder	12 ~ 36VDC	OT-70LR-D
	DeviceNet				OT-7DLR-D
	Ethernet I/P				OT-7ELR-D
	EtherCAT				OT-7CLR-D
	Profibus DP				OT-7PLR-D
	None				OT-70SR-D
	DeviceNet	LAN + Audio Input, Aux Out, 3DI, 3DO	OT-7DSR-D		
	Ethernet I/P		OT-7ESR-D		
	EtherCAT		OT-7CSR-D		
	Profibus DP		OT-7PSR-D		
	None		OT-70LE-D		
	DeviceNet	LAN	OT Builder +		OT-7DLE-D
	Ethernet I/P				OT-7ELE-D
	EtherCAT				OT-7CLE-D
	Profibus DP				OT-7PLE-D
	None				OT-70SE-D
	DeviceNet	LAN + Audio Input, Aux Out, 3DI, 3DO	OT-7DSE-D		
	Ethernet I/P		OT-7ESE-D		
	EtherCAT		OT-7CSE-D		
	Profibus DP		OT-7PSE-D		
	None	LAN	OT Builder	90 ~ 250VAC	OT-70LR-A
	DeviceNet				OT-7DLR-A
	Ethernet I/P				OT-7ELR-A
	EtherCAT				OT-7CLR-A
	Profibus DP				OT-7PLR-A
	None				OT-70SR-A
	DeviceNet	LAN + Audio Input, Aux Out, 3DI, 3DO	OT-7DSR-A		
	Ethernet I/P		OT-7ESR-A		
	EtherCAT		OT-7CSR-A		
	Profibus DP		OT-7PSR-A		
	None	LAN	OT Builder +		OT-70LE-A
	DeviceNet				OT-7DLE-A
Ethernet I/P	OT-7ELE-A				
EtherCAT	OT-7CLE-A				
Profibus DP	OT-7PLE-A				
None	LAN + Audio Input, Aux Out, 3DI, 3DO	OT-70SE-A			
DeviceNet		OT-7DSE-A			
Ethernet I/P		OT-7ESE-A			
EtherCAT		OT-7CSE-A			
Profibus DP		OT-7PSE-A			

Ordering Information

OT

Screen Size	Network Ports	Optional Port	Software	Power Supply	Model No.
10" Regular	None	2 LAN	OT Builder	12 ~ 36VDC	OT-100LR-D
	DeviceNet				OT-10DLR-D
	Ethernet I/P				OT-10ELR-D
	EtherCAT				OT-10CLR-D
	Profibus DP				OT-10PLR-D
	None	2 LAN + Audio Input, Aux Out, 3DI, 3DO			OT-100SR-D
	DeviceNet				OT-10DSR-D
	Ethernet I/P				OT-10ESR-D
	EtherCAT				OT-10CSR-D
	Profibus DP				OT-10PSR-D
	None	2 LAN	OT Builder +		OT-100LE-D
	DeviceNet				OT-10DLE-D
	Ethernet I/P				OT-10ELE-D
	EtherCAT				OT-10CLE-D
	Profibus DP				OT-10PLE-D
	None	2 LAN + Audio Input, Aux Out, 3DI, 3DO			OT-100SE-D
	DeviceNet				OT-10DSE-D
	Ethernet I/P				OT-10ESE-D
	EtherCAT				OT-10CSE-D
	Profibus DP				OT-10PSE-D
	None	2 LAN	OT Builder	90 ~ 250VAC	OT-100LR-A
	DeviceNet				OT-10DLR-A
	Ethernet I/P				OT-10ELR-A
	EtherCAT				OT-10CLR-A
	Profibus DP				OT-10PLR-A
	None	2 LAN + Audio Input, Aux Out, 3DI, 3DO			OT-100SR-A
	DeviceNet				OT-10DSR-A
	Ethernet I/P				OT-10ESR-A
	EtherCAT				OT-10CSR-A
	Profibus DP				OT-10PSR-A
	None	2 LAN	OT Builder +		OT-100LE-A
	DeviceNet				OT-10DLE-A
	Ethernet I/P				OT-10ELE-A
	EtherCAT				OT-10CLE-A
	Profibus DP				OT-10PLE-A
	None	2 LAN + Audio Input, Aux Out, 3DI, 3DO			OT-100SE-A
	DeviceNet				OT-10DSE-A
	Ethernet I/P				OT-10ESE-A
	EtherCAT				OT-10CSE-A
	Profibus DP				OT-10PSE-A

Sensing

Control

Weighing

HMI

PLCs

Remote I/O Modules

Industrial Computers

Components

Ordering Information

Screen Size	Network Ports	Optional Port	Software	Power Supply	Model No.
15" Regular	None	2 LAN	OT Builder	12 ~ 36VDC	OT-150LR-D
	DeviceNet				OT-15DLR-D
	Ethernet I/P				OT-15ELR-D
	EtherCAT				OT-15CLR-D
	Profibus DP				OT-15PLR-D
	None	2 LAN +6 Audio Input, Aux Out, 3DI, 3DO			OT-150SR-D
	DeviceNet				OT-15DSR-D
	Ethernet I/P				OT-15ESR-D
	EtherCAT				OT-15CSR-D
	Profibus DP				OT-15PSR-D
	None	2 LAN	OT Builder +		OT-150LE-D
	DeviceNet				OT-15DLE-D
	Ethernet I/P				OT-15ELE-D
	EtherCAT				OT-15CLE-D
	Profibus DP				OT-15PLE-D
	None	2 LAN + Audio Input, Aux Out, 3DI, 3DO			OT-150SE-D
	DeviceNet				OT-15DSE-D
	Ethernet I/P				OT-15ESE-D
	EtherCAT				OT-15CSE-D
	Profibus DP				OT-15PSE-D
	None	2 LAN	OT Builder	90 ~ 250VAC	OT-150LR-A
	DeviceNet				OT-15DLR-A
	Ethernet I/P				OT-15ELR-A
	EtherCAT				OT-15CLR-A
	Profibus DP				OT-15PLR-A
	None	2 LAN + Audio Input, Aux Out, 3DI, 3DO			OT-150SR-A
	DeviceNet				OT-15DSR-A
	Ethernet I/P				OT-15ESR-A
	EtherCAT				OT-15CSR-A
	Profibus DP				OT-15PSR-A
	None	2 LAN	OT Builder +		OT-150LE-A
	DeviceNet				OT-15DLE-A
	Ethernet I/P				OT-15ELE-A
	EtherCAT				OT-15CLE-A
	Profibus DP				OT-15PLE-A
	None	2 LAN + Audio Input, Aux Out, 3DI, 3DO			OT-150SE-A
	DeviceNet				OT-15DSE-A
	Ethernet I/P				OT-15ESE-A
	EtherCAT				OT-15CSE-A
	Profibus DP				OT-15PSE-A

Ratings and Specifications

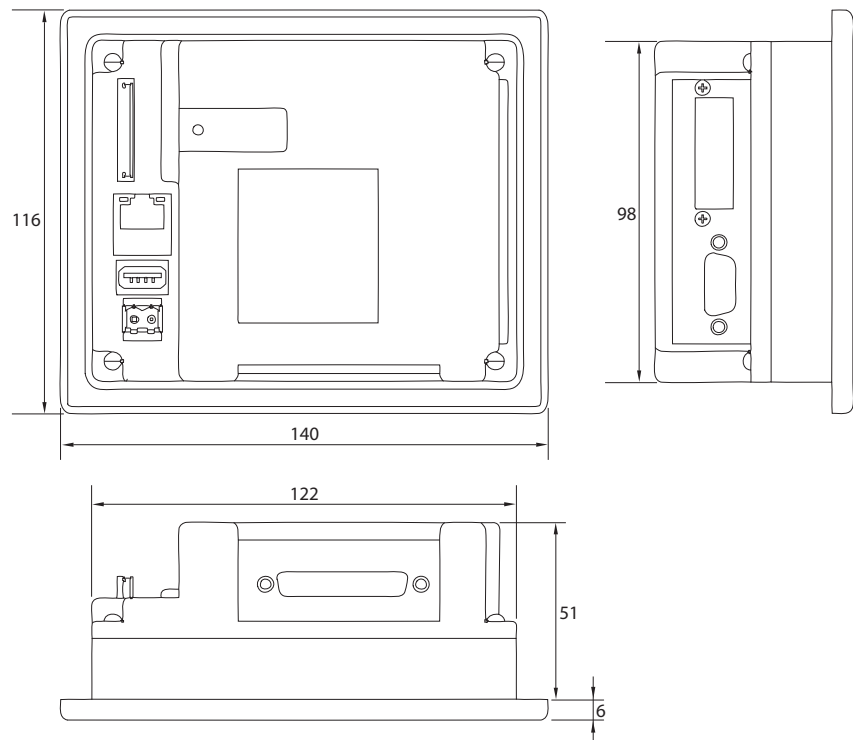
OT

Type		4.3" Regular	7" Basic	7" Regular	10" Regular	15" Regular	
Models	12 ~ 36VDC		OT-4___-D	OT-7B___-D	OT-7___-D	OT-10___-D	OT-15___-D
	60 ~ 250VAC		-	OT-7B___-A	OT-7___-A	OT-10___-A	OT-15___-A
Main Hardware	Processor, CPU Speed		ARM 11, 533MHz		ARM A8 Cortex, 667MHz		
	Flash Memory (ROM)		128 MB				
	SDRAM (RAM)		128 MB	256 MB			
	Operating Platform		WinCE 6.0				
	Real Time Clock		Yes				
	Buzzer		Yes				
	Ports	COM	RS232C, DB9 Male - 1; RS232C/ RS422/ RS485, DB25 Female - 1				
		LAN	Ethernet 10/100 Mbps, RJ45 - 1 (Optional for 4.3")			Ethernet 10/100 Mbps, RJ45 - 2	
		USB Host	1				
		SD Card	upto 16 GB - 1		upto 32 GB - 1		
Audio		-		Optional			
Network Ports		DeviceNet/ Ethernet I/P/ EtherCAT/ Profibus	-	DeviceNet/ Ethernet I/P/ EtherCAT/ Profibus			
LCD Touch Panel	Size		4.3"	7"		10"	15"
	Resolution		480 x 272	800 x 480		1024 x 768	1024 x 768
	Display Type		Widescreen TFT LCD Display				
	Colors		65,536				
	Touch Screen Type		4 Wire Resistive Analog				
	Active Display Area		95 x 54mm	152 x 91mm	152 x 91mm	203 x 152mm	203 x 152mm
	Display Positions		Horizontal & Vertical				
	Backlight Type		LED				CCFL
	MTBF (backlight at 25° C)		30,000 hrs	30,000 hrs	50,000 hrs	50,000 hrs	50,000 hrs
	Brightness Adjustment		Yes				
	Screen Saver		Yes				
Power Supply		11-36VDC	11-36VDC; 90-250VAC				
Power Consumption		10 Watts	12 Watts	13 Watts	15 Watts	27 Watts	
Power ON Indication		Green LED					
Mounting & Dimension	Mounting		Panel mountable front bezel and mounting screws provided				
	Mounting Depth		51mm		50mm		
	Outer Dimensions (W x H x D mm)		140 x 116 x 57	212 x 156 x 57		325 x 263 x 56	400 x 310 x 56
Operating Temperature		0° ~ 50°C(non- freezing; non- condensing)					
Storage Temperature		-20° ~ 60°C (non- freezing; non- condensing)					
Operating Humidity		10 ~ 90% RH (non- condensing)					
Storage Humidity		5 ~ 95% RH (non- condensing)					
Vibration		10 to 55 Hz, 1.5mm amplitude, in X, Y, Z directions (120 min.)					
Shock		100G, 6ms, in X, Y, Z directions 3 times					
Protection Class		Front Panel: IP65; Rear: IP20					
Weight		0.5 KG	1.2 KG	1.4 KG	3.6 KG	5.1 KG	
Material		Bezel: Plastic; Housing: Plastic		Bezel: Aluminium; Housing: Plastic	Bezel: Aluminium; Housing: Metal		

Dimension Drawing

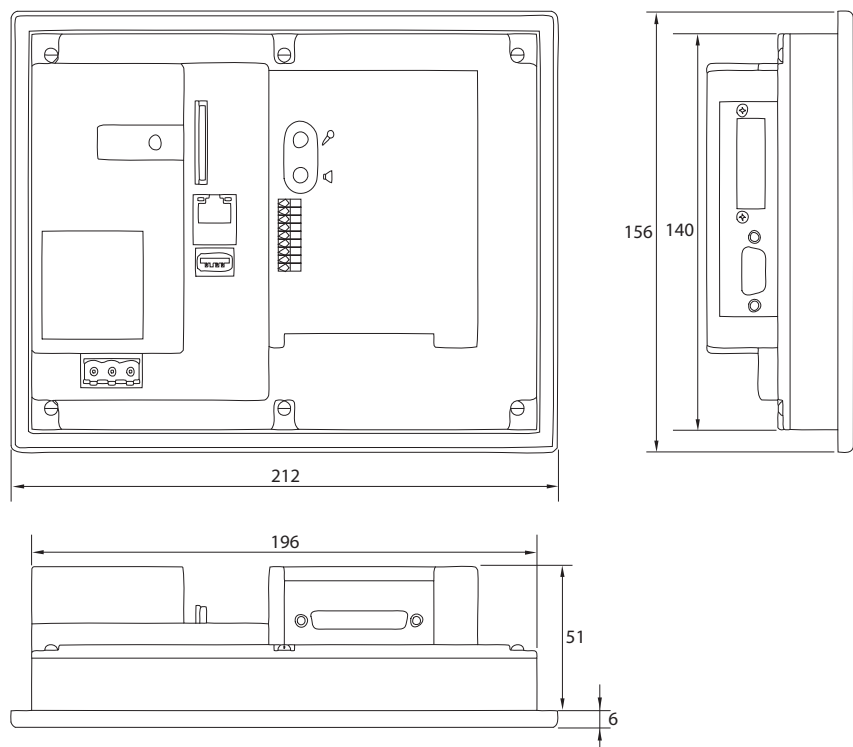
OT

◆ OT-4 _ _ _ - _



◆ OT-7 _ _ _ - _

◆ OT-7B _ _ _ - _

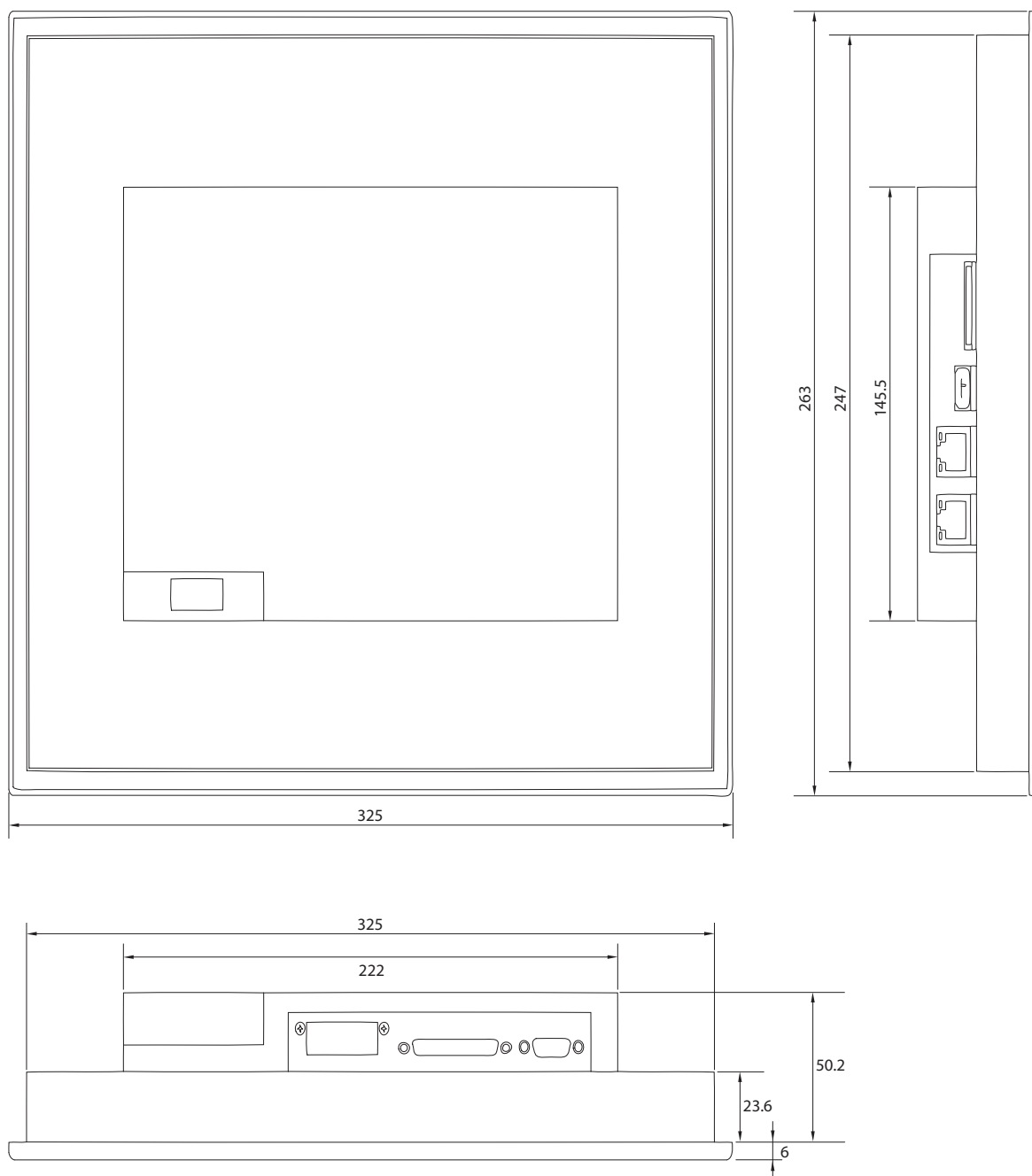


All dimensions are in mm

Dimension Drawing

OT

◆ OT-10 _ _ _ - _

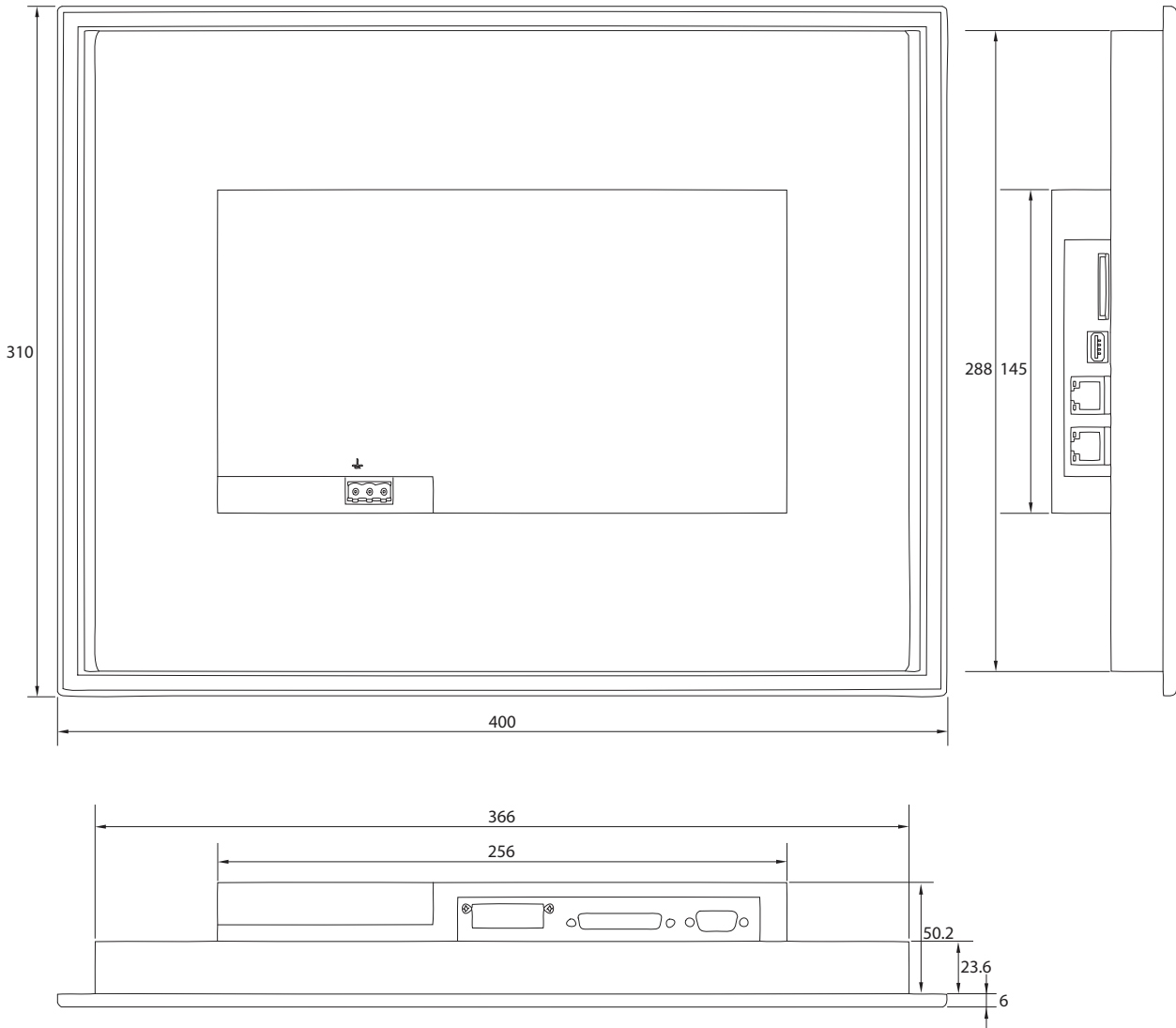


Note: Tolerance is ± 1 mm. Panel cutout is to be always min. +1mm than what is indicated in the drawing.



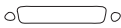

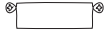

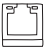
All dimensions are in mm

Dimension Drawing

◆ OT-15 _ _ _ - _



◆ Port Legend

	- DB9, Male		- USB, Female
	- DB25, Female		- SD Card Slot
	- Network Option		- Power Supply
	- RJ45		

All dimensions are in mm

www.inno.sg/ot

Port Application

OT



Networking Port Options

The networking port is active and vacant by default if the base unit without option port is selected. However Networking option boards can be easily added to the HMI later. The list of available option boards with Part No. is given below.

Option Board Type	Part No.
MPI/ Profibus DP	Hnet-1
ProfiNet	Hnet-2
DeviceNet	Hnet-3
Ethernet/IP	Hnet-4

Option Board Type	Part No.
CANopen	Hnet-5
EtherCAT	Hnet-6
BACnet/IP	Hnet-7
CC-Link	Hnet-8

HMI Drivers

◆ Serial Drivers

Manufacturers	Protocols	Models
Allen Bradley	DF1 Protocol	SLC 500 series, Micrologix, CompactLogix, ControlLogix, PLC5 series
Allen Bradley	DH485	SLC 500 series, Micrologix, CompactLogix, ControlLogix, PLC5 series
Beckhoff (serial)	KS8000 Protocol	CX 90x0, CX 10x0 series
Danfoss (VFD)	FC Protocol	FC series for Automation/ HVAC VFD
Delta	DVP Serial	DVP-ES, DVP-EX, DVP-SS, DVP-SA, DVP-SX, DVP-SC, DVP-EH, DVP-EH2, DVP-DV, DVP-PM
Fatek	Fatek	FB series
Festo	CI Command	FEC series
Fuji	T-link Protocol	Micrex- F series
Fuji	Micrex Series Protocol	SPH200, SPH300, SPH300EX, SPH2000
GE Fanuc	Series Ninety Protocol (SNP)	Micro PLC, GE 90-30/ 90-70, Versa Max
GE Fanuc	SNP-X Protocol	Micro PLC, GE 90-30/ 90-70, Versa Max
Hitachi	Hitachi Hi Protocol	Micro EH, EH, EHV, H series
IDEC Izumi	Delta Link	MicroSmart, OpenNet Controller, Micro3
Koyo	Direct Net	DL05, 06, 105, 205, 305, 405 series
Koyo	K Sequence	DL05, 06, 105, 205, 405 series
Keyence	ASCII	KV800, KV1000, KV3000, KV5000
Lenze (VFD)	LECOM	8200/ 9300 Vector, 9300 Servo controller, 9300 Servo PLC, Driver PLC, 8200 Motec
LG	LG Cnet	GM series, MK series- K80S, K120S, K200S, K300S, k1000S, XGB, XGK series
Panasonic	Mewtocol	FP series- FP0, FP2, FP-X, FP-Sigma, FP2SH
Modicon	Modbus ASCII, RTU Master	Any device
Messung	Modbus RTU	Nextgen 2000, 5000 series
Mitsubishi	MelSec	FX, A, QnA, Q series, FX direct CPU port
Omron	HostLink	CV, CVM, CVMX, CX, CH, CS, CJ, CQM1H series
Omron	Fins	CP, CS, CJ series
Siemens	PPI	S7-200
Siemens	MPI	S7-300/ 400
Schneider	UniTeleway	TSX-Micro, TSX series
Toshiba	Computer Link, T Series Serial	S2E, ST2 series
Toshiba	T1-micro Series Serial	T1-Micro
Vigor	Vigor Serial	M, VB, VH series
Vipa	MPI, MP2I	100V, 200V, 300V, 300S, 500S
Yaskawa	Memobus- MP Serial	Memocon, MP-900, MP-2000 series
Yaskawa (VFD)	Memobus- Inverter Serial	F1000, V1000, T1000, A1000
Yokogawa	Factory Ace FA-M3 Serial	FA-M3 model F3SPX series

HMI Drivers

OT

◆ OPC Drivers



OPC Server within OT Builder includes many drivers for PLCs, VFDs and many 3rd party devices for both Serial and Ethernet ports. The HMI is able to communicate on both ports simultaneously.

◆ Ethernet Drivers

Manufacturers	Protocols	Models
Allen Bradley	Ethernet IP, CIP	SLC 500 series, MicroLogix, CompactLogix, ControlLogix, PLC5 series
Beckhoff	Beckhoff Ethernet	CX90x0, CX10x0 series
Delta	Delta Ethernet Protocol	DVP-SV series
Fatek	Fatek Ethernet	FB series
Festo	Ethernet CI Command	FEC series
GE	SRTIP	GE 90-30/ 90-70, Versa Max
Hitachi	H series Ethernet	EH, EHV, H series
Koyo	Direct ECOM	DL05, 06, 205, 405
Keyence	Keyence Ethernet	KV700, KV1000, KV3000, KV5000
LG	LG Fast Ethernet	GM series, MK series 200S, 300S, 1000S, XGB, XGK series
Modicon	Modbus TCP Master	All models
Mitsubishi	A, Q, QnA, FX Ethernet	A, Q, QnA, FX series
Omron	FINS UDP	CS, CH, CJ Series
Siemens S7	Siemens TCP/IP	S7-200, 300, 400 (connection via CP card at PLC), S7-1200
Toshiba	Toshiba Ethernet	T, V series
Vipa	TCP/IP	200V, 300S, 500S
Yaskawa MP	Memobus Ethernet	MP-900, MP-2000 series
Yokogawa	Yokogawa FA-M3 Ethernet	FA-M3 model, F3SPX series

Exclusively Represented by:

Intech Systems Chennai Pvt Ltd
S-2, Guindy Industrial Estate
Chennai - 600 032. Ph: 4353 8888
Email: info@intechchennai.com


www.inno.sg

© INNO, Rights Reserved
In the interest of continuous product improvement
specifications are subject to change without notice