

Capacitive Proximity Sensor

Economical Type

PCE

Proximity Sensors

Photoelectric Sensors

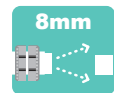
Measurement Sensors

Vision & Safety Sensors



SALIENT FEATURES

- ◆ Economical
- ◆ Brass Housing
- ◆ AC/DC 2 & 3-wire
- ◆ M18 & 30 Non Flush
- ◆ Sensitivity Adjustment
- ◆ Sense metals & non metals



Model Number Legend



PCE - □□ - □□ - □

1 2 3 4 5 6

1. Series

PCE

2. Housing

M18: M18, Threaded

M30: M30, Threaded

3. Shield

N: Non-Flush/ Unshielded

4. Sensing Distance

8: 8 mm

15: 15 mm

5. Output

NO: NPN - NO

NC: NPN - NC

PO: PNP - NO

PC: PNP - NC

DO: DC 2 wire - NO

DC: DC 2 wire - NC

AO: AC 2 wire - NO

AC: AC 2 wire - NC

6. Connection

2M: 2m Cable

#. Accessories included

Check Nut: 1 Pair

Example:

PCE-M18N-8AO-2M

PCE Series - M18, Non-flush - 8mm Sensing Distance, NPN NO - 2 meter Cable

NOTE: Contact us for models not shown in catalogue.

Control

Weighing

Automation

Components

Product Highlights

◆ Economical Capacitive Sensor with Teach

Electric capacitive type proximity sensor PCE Series is able to detect a wide variety of materials including iron, metal, plastic, wood, stone, water, etc.



Ratings and Specifications

Size		M18	M30
Shield		Non-Flush	
Model	NPN - NO	PCE-M18N-8NO-2M	PCE-M30N-15NO-2M
	NPN - NC	PCE-M18N-8NC-2M	PCE-M30N-15NC-2M
	PNP - NO	PCE-M18N-8PO-2M	PCE-M30N-15PO-2M
	PNP - NC	PCE-M18N-8PC-2M	PCE-M30N-15PC-2M
	DC 2 wire - NO	PCE-M18N-8DO-2M	PCE-M30N-15DO-2M
	DC 2 wire - NC	PCE-M18N-8DC-2M	PCE-M30N-15DC-2M
	AC 2 wire - NO	PCE-M18N-8AO-2M	PCE-M30N-15AO-2M
	AC 2 wire - NC	PCE-M18N-8AC-2M	PCE-M30N-15AC-2M
Sensing Distance		8 mm	15 mm
Response Frequency		20Hz(AC) ; 50Hz(DC)	
Standard Sensing Target		∅18 x 1 mm iron piece	∅30 x 1 mm iron piece
Setting Distance		0 ~ 6 mm	0 ~ 10 mm
Hysteresis		max. 15%	
Sensitivity Adjustment		Built-in externally adjustable endless pot.	
Supply Voltage		6 - 36 VDC or 100 - 240 VAC (± 10%) depending on Model	
Current Consumption		DC 3 wire: Max. 15 Ma	
Lekage Current		AC 2 wire: Max. 2.2 mA	
Control Output		DC 3 wire: Max. 200 mA; AC 2 wire: Max. 5 ~ 200 mA	
Output Residual Voltage		DC 3 wire: Max. 1.5 V; AC 2 wire: Max. 20 V	
Operation Indication		Red LED	
Output Type		NPN/ PNP (NO/NC) in DC 3 Wire or NO/ NC in AC/ DC 2 wire depending on Model	
Connection		2 meter cable	
Protection Circuits		DC 3 wire: Surge, Reverse Polarity Protection; AC 2 wire: -NA-	
Shock Resistance		20 G in X, Y, Z direction for 3 times	
Ambient Temperature		Operation: -25° ~ 70° C; Storage: -30° ~ 80° C (non-freezing; non-condensing)	
Ambient Humidity		Operation: 40 ~ 85% RH; Storage: 35 ~ 95% RH (non- condensing)	
Protection Class		IP64	
Weight		DC 3 wire: Aprox. 70g; AC 2 wire: Aprox. 65g	DC 3 wire: Aprox. 210g; AC 2 wire: Aprox. 220g
Material		Nickel Plated Brass; Sensing Head: PC	

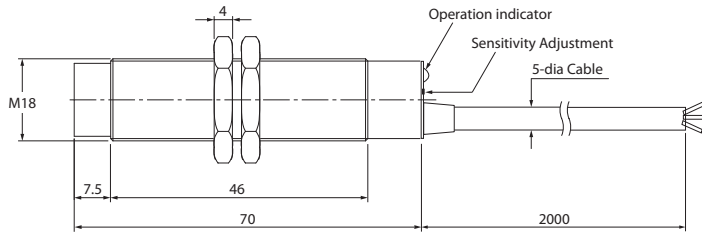
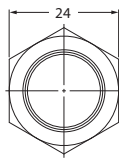
Note: The sensing distance mentioned is for iron with the sensitivity set to maximum; for Non-Ferrous materials the sensing distance will vary.

Sensor Dimension Drawing

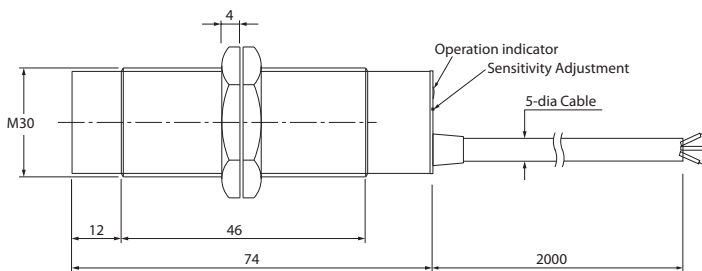
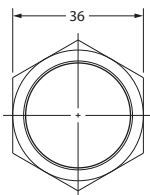
PCE

PCE-M18N-8_-2M

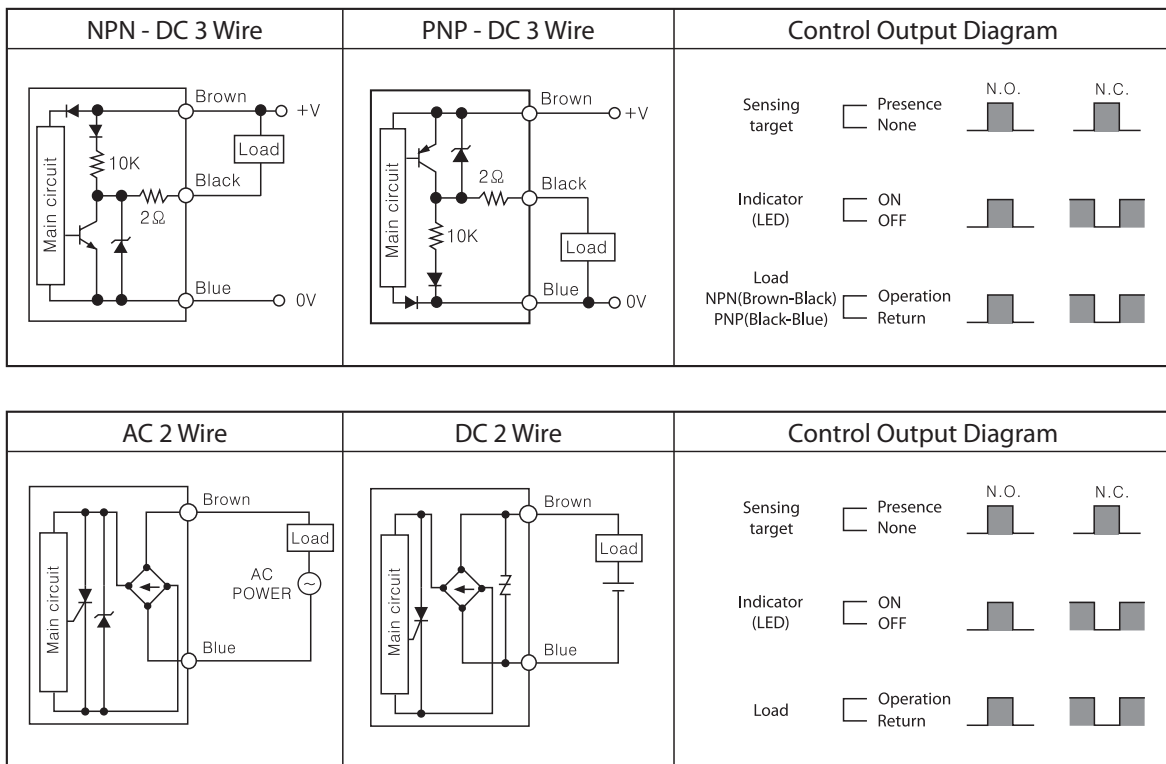
All dimensions are in mm



PCE-M30N-15_-2M



Control Output Diagram



Proximity Sensors

Photoelectric Sensors

Measurement Sensors

Vision & Safety Sensors

Control

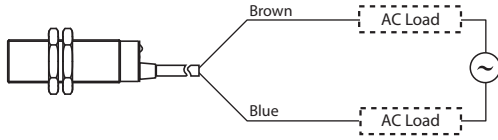
Weighing

Automation

Components

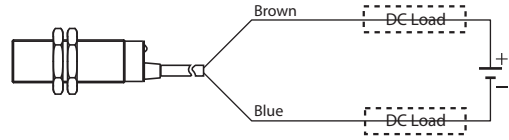
Connection

◆ NO & NC - AC 2 Wire Type



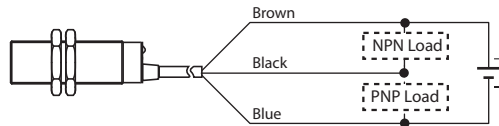
Brown : 100 - 240 VAC (± 10%)
 Blue : Neutral

◆ NO & NC - DC 2 Wire Type



Brown : 6 - 36 VDC
 Blue : 0 VDC

◆ NPN & PNP - DC 3 Wire Type



Brown : DC 6 - 36 VDC
 Blue : 0 VDC
 Black : Control Output

Exclusively Represented by:

Intech Systems Chennai Pvt Ltd
 S-2, Guindy Industrial Estate
 Chennai - 600 032. Ph: 4353 8888
 Email: info@intechchennai.com

INNOTM
www.inno.sg

© INNO, Rights Reserved
 In the interest of continuous product improvement
 specifications are subject to change without notice

Cat. No. PCE-A13

www.inno.sg/pce