

Inductive Proximity Sensor

AC/ DC 2 wire

PI2



SALIENT FEATURES

- ◆ IP67, Brass Housing
- ◆ LED - Status Indication
- ◆ AC, DC 2 Wire in NO & NC
- ◆ Shielded and Non -Shielded
- ◆ Prewired, Jn. Connector Types
- ◆ M8, M12, M18, M30 Models

Model Number Legend

PI2 - - -

1 2 3 4 5 6

1. Series

PI2

2. Housing

M8: M8, Threaded

M12: M12, Threaded

M18: M18, Threaded

M30: M30, Threaded

3. Shield

F: Flush/ Shielded

N: Non-Flush/ Unshielded

4. Sensing Distance

1: 1 mm

1.5: 1.5 mm

2: 2 mm

5: 5 mm

10: 10 mm

18: 18 mm

5. Output

DO: 2 wire DC - NO

DC: 2 wire DC - NC

AO: 2 wire AC - NO

AC: 2 wire AC - NC

6. Connection

2M: 2m Cable

M12J3: M12 Junction Connector with 0.3m extension

#. Accessories included

Check Nut: 1 Pair

Example:

PI2-M18F-5AO-2M

PI2 Series - M18, Flush - 5mm Sensing Distance, AC 2 Wire, NO - 2 meter Cable

NOTE: Contact us for models not shown in catalogue.
Connector cables are sold separately; look in CC series catalogue for the same (www.inno.sg/cc).

Size			M8	M12	M18	M30
Model	Flush	DC - NO	PI2-M8F-1.5DO- __	PI2-M12F-2DO- __	PI2-M18F-5DO- __	PI2-M30F-10DO- __
		DC - NC	-	PI2-M12F-2DC- __	PI2-M18F-5DC- __	PI2-M30F-10DC- __
		AC - NO	-	PI2-M12F-2AO- __	PI2-M18F-5AO- __	PI2-M30F-10AO- __
		AC - NC	-	-	-	PI2-M30F-10AC- __
	Non-Flush	DC - NO	PI2-M8N-2DO- __	PI2-M12N-5DO- __	PI2-M18N-10DO- __	PI2-M30N-18DO- __
		DC - NC	-	PI2-M12N-5DC- __	PI2-M18N-10DC- __	PI2-M30N-18DC- __
		AC - NO	-	PI2-M12N-5AO- __	PI2-M18N-10AO- __	PI2-M30N-18AO- __
		AC - NC	-	-	-	PI2-M30N-18AC- __
Sensing Distance	Flush	1.5mm	2mm	5mm	10mm	
	Non-Flush	2mm	5mm	10mm	18mm	
Standard Sensing Target			Iron, 12x12x1mm	Iron, 15x15x1mm	Iron, 30x30x1mm	Iron, 54x54x1mm
Hysteresis			± 15%			± 10%
Response Frequency	Flush	2000 Hz	1500 Hz	600 Hz	400 Hz	
	Non-Flush	800 Hz	400 Hz	200 Hz	100 Hz	
Supply Voltage			For DC type: 6 - 36 VDC; For AC type: 90 - 250 VAC			
Current Consumption			max. 20mA			
Connection			PI- __ - __ - 2M - 2 meter pre wired; PI- __ - __ - M12J3 - M12 junction connector with 0.3m cable extension			
Output	Type	AC/ DC 2 wire - NO/ NC depending on model				
	Switching Capacity	100mA				
Indication			Operation: Red LED			
Dielectric Strength			1000 VAC, 50/ 60 Hz for 1 minute between current carry parts and case			
Voltage Influence			± 5% max. of sensing distance (ref. sensing distance taken at 24VDC)			
Temperature Influence			± 20% max. of sensing distance (ref. sensing distance taken at 25°C)			
Vibration Resistance			10 - 55Hz, 1mm for 2 hours in X, Y, Z directions (destruction)			
Shock Resistance			50 G (10 times) in X, Y, Z direction for 3 times (destruction)			
Ambient Temperature			Operation: -25° ~ 70° C; Storage: -30° ~ 80° C (non-freezing; non-condensing)			
Ambient Humidity			Operation: 40 ~ 85% RH; Storage: 35 ~ 95% RH (non-condensing)			
Protection Class			Pre- Wired Type: IP67; Junction Connector Type: IP65			
Weight	Prewired	approx. 42g	approx. 70g	approx. 150g	approx. 200g	
	Jn. Connector	approx. 35g	approx. 45g	approx. 70g	approx. 120g	
Material			Head: PBT; Tube: Brass; Nuts: Copper Alloy; Washer: MS			
Tightening Torque			10 Nm (max.)			

Note:

* - Sensing Distance is calculated on the basis of the maximum sensing capacity when tested with a standard test object.

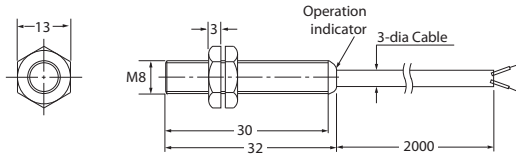
The Specifications for the □-M12J3 models stand good only if used along with CC-M12□ type connector cables.

The sensors are 2 wire type and the connection is to be made in series; sensor failure will occur if connected in parallel.

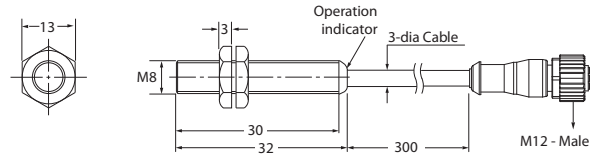
Sensor Dimension Drawing

PI2

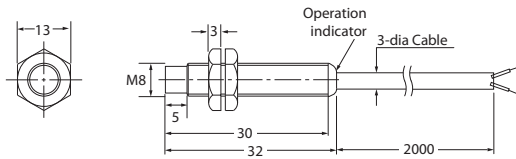
PI2-M8F-1.5__-2M



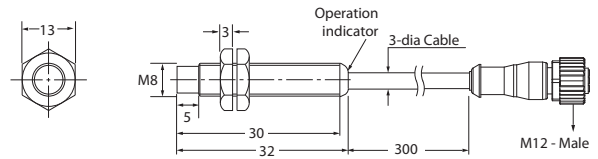
PI2-M8F-1.5__-M12J3



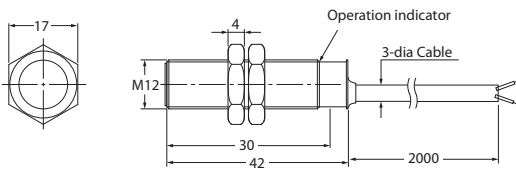
PI2-M8N-2__-2M



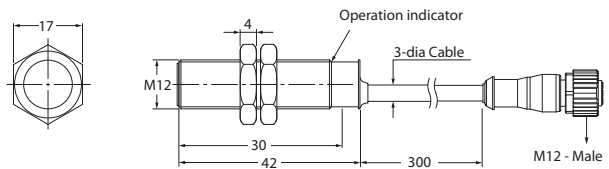
PI2-M8N-2__-M12J3



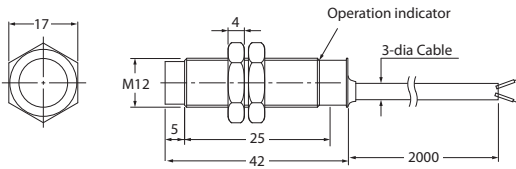
PI2-M12F-2__-2M



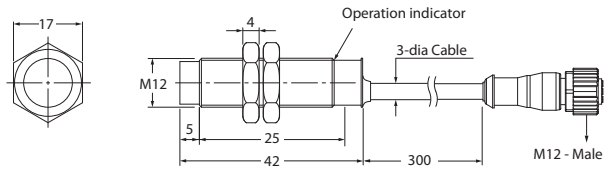
PI2-M12F-2__-M12J3



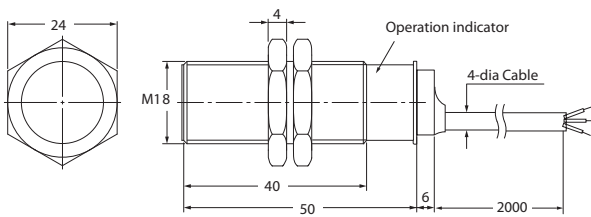
PI2-M12N-5__-2M



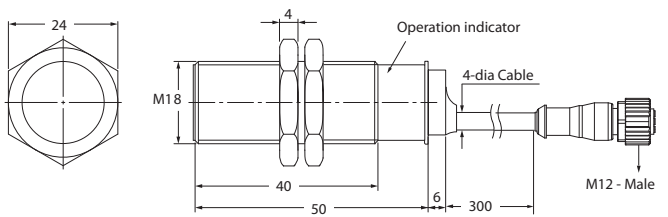
PI2-M12N-5__-M12J3



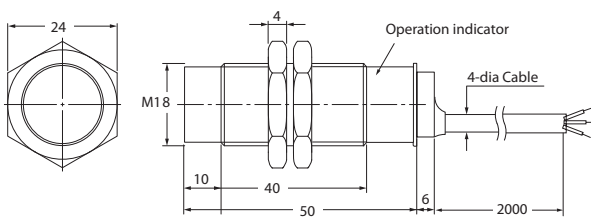
PI2-M18F-5__-2M



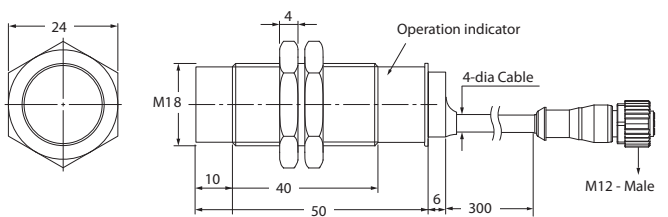
PI2-M18F-5__-M12J3



PI2-M18N-10__-2M



PI2-M18N-10__-M12J3



Proximity Sensors

Photoelectric Sensors

Measurement Sensors

Vision & Safety Sensors

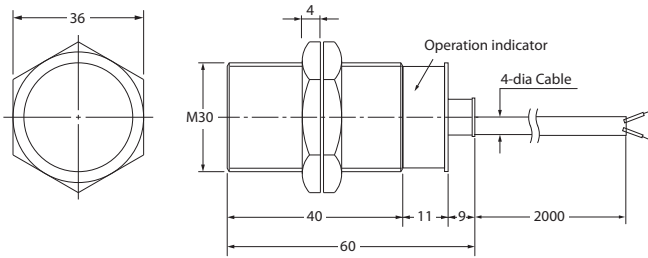
Control

Weighing

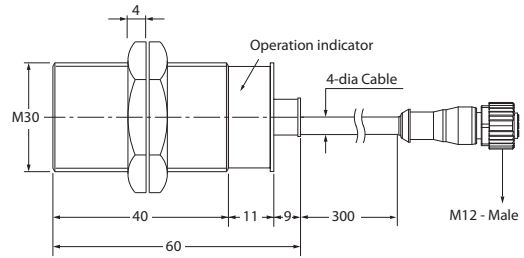
Automation

Components

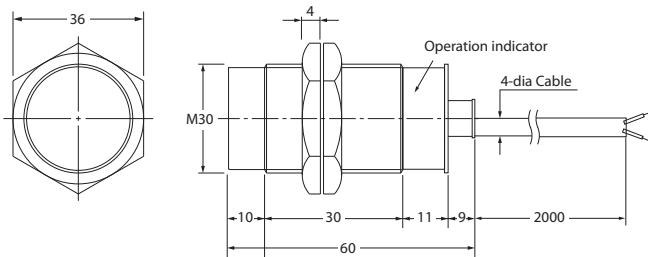
PI2-M30F-10__-2M



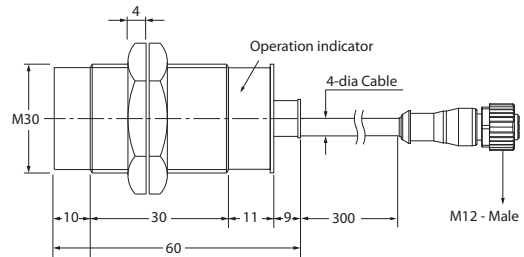
PI2-M30F-10__-M12J3



PI2-M30N-18__-2M



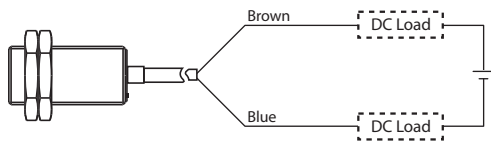
PI2-M30N-18__-M12J3



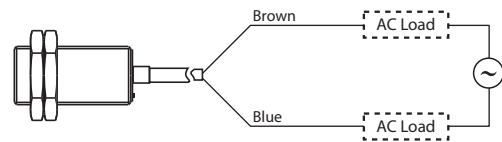
All dimensions are in mm

Connection

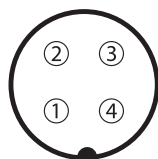
◆ NO & NC - DC 2 Wire Type



◆ NO & NC - AC 2 Wire Type



◆ Junction Connector Type

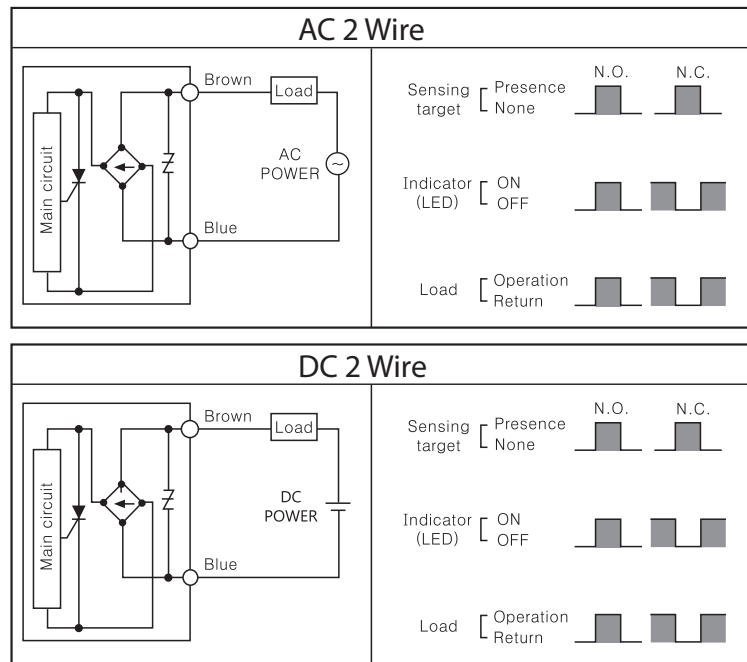


Note: Connector Cable is not supplied along with unit

- 1 : Connection
- 2 : -
- 3 : Connection
- 4 : -

Control Output Diagram

PI2



Proximity Sensors

Photoelectric Sensors

Measurement Sensors

Vision & Safety Sensors

Control

Weighing

Automation

Components

Cat. No. PI2-313

Exclusively Represented by:

Intech Systems Chennai Pvt Ltd
 S-2, Guindy Industrial Estate
 Chennai - 600 032. Ph: 4353 8888
 Email: info@intechchennai.com

INNOTM
www.inno.sg

© INNO, Rights Reserved
 In the interest of continuous product improvement
 specifications are subject to change without notice