

# Inductive Proximity Sensor

Double Sensing (DC 2 Wire)

# PQ2-D



## SALIENT FEATURES

- ◆ Double the sensing
- ◆ IP - 67, Brass Housing
- ◆ DC-2 wire in NO & NC
- ◆ High Tightening Torque
- ◆ Shielded and Non- Shielded
- ◆ Pre wired & Connector Types
- ◆ M8, M12, M18 & M30 Models

## Model Number Legend



**PQ2-D**  -   -   -   -

1 2 3 4 5 6 7 8

### 1. Series

PQ2

### 2. Type

D: Double Sensing

### 3. Body

S: Standard Length

L: Long Body

### 4. Housing

M8: M8, Threaded

M12: M12, Threaded

M18: M18, Threaded

M30: M30, Threaded

### 4. Shield

F: Flush/ Shielded

N: Non-Flush/ Unshielded

### 5. Sensing Distance

2: 2 mm

4: 4 mm

8: 8 mm

16: 16 mm

25: 25 mm

### 6. Output

DO: 2 wire DC - NO

DC: 2 wire DC - NC

### 7. Connection

2M: 2m Cable

M12C: M12 Connector

### #. Accessories included

Check Nut: 1 Pair

### Example:

PQ2-DL-M8F-2DO-2M

PQ2 Series - Double Sensing Type, Long Body - M8, Flush - 2mm Sensing Distance, DC 2 wire (NO) - 2 meter Cable

### NOTE:

Contact us for models not shown in catalogue.

Connector cables are sold separately; look in CC series catalogue for the same ([www.inno.sg/cc](http://www.inno.sg/cc)).

Size			M8	M12	M18	M30
Model	Flush	DC - NO	PQ2-D_-M8F-2DO- _	PQ2-D_-M12F-4DO- _	PQ2-D_-M18F-8DO- _	PQ2-D_-M30F-16DO- _
		DC - NC	PQ2-D_-M8F-2DC- _	PQ2-D_-M12F-4DC- _	PQ2-D_-M18F-8DC- _	PQ2-D_-M30F-16DC- _
	Non- Flush	DC - NO	PQ2-D_-M8N-4DO- _	PQ2-D_-M12N-8DO- _	PQ2-D_-M18N-16DO- _	PQ2-D_-M30N-25DO- _
		DC - NC	PQ2-D_-M8N-4DC- _	PQ2-D_-M12N-8DC- _	PQ2-D_-M18N-16DC- _	PQ2-D_-M30N-25DC- _
Sensing Distance	Flush	2mm	4mm	8mm	16mm	
	Non- Flush	4mm	8mm	16mm	25mm	
Standard Sensing Target			Iron, Ø10x1mm	Iron, Ø15x1mm	Ø22x1mm Iron	Iron, Ø35x1mm
Hysteresis			± 10%			
Response Frequency/ Time	Flush	2000 Hz/ 0.1ms	1000 Hz/ 0.2ms	500 Hz/ 0.5ms	150 Hz/ 1ms	
	Non- Flush	1000 Hz/ 0.2ms	500 Hz/ 0.5ms	150 Hz/ 1ms	100 Hz/ 1ms	
Supply Voltage			10-30VDC (ripple included)			
Current Consumption			< 10mA			
Connection			PQ2-D_- _ _ _ - 2M - 2 meter pre-wired; PQ2-D_- _ _ _ - M12C - M12 Connector			
Output	Type	DC - NO/ NC depending on the model				
	Switching Capacity	200mA; Overload trip: 220mA				
	Leakage Current	< 0.01mA				
	Voltage Drop	< 1.5VDC				
Indication			Operation: Yellow LED			
Protection Circuits			Reverse power supply polarity; reversed output polarity; Short circuit; Overload protection			
Dielectric Strength			1000 VAC, 50/60 Hz for 1 minute between current carry parts and case			
Voltage Influence			± 5% max. of sensing distance (ref. sensing distance taken at 24VDC)			
Temperature Influence			± 10% max. of sensing distance (ref. sensing distance taken at 25°C)			
Vibration Resistance			10 - 55Hz, 1mm for 2 hours in X, Y, Z directions (destruction)			
Shock Resistance			50 G (10 times) in X, Y, Z direction for 3 times (destruction)			
Ambient Temperature			Operation: -25° ~ 70° C; Storage: -30° ~ 80° C (non-freezing; non-condensing)			
Ambient Humidity			Operation: 40 ~ 85% RH; Storage: 35 ~ 95% RH (non- condensing)			
Protection Class			IP-67			
Weight	Standard Length	Prewired	-	-	approx. 132g	approx. 182g
		Connector	-	-	approx. 52g	approx. 120g
	Long Body	Prewired	approx. 55g	approx. 70g	approx. 150g	approx. 215g
		Connector	approx. 20g	approx. 30g	approx. 95g	approx. 185g
Material			Head: POM; Tube: Nickel plated Brass (SS for M8); Nuts: Chrome plated Copper Alloy; Washer: Chrome plated Iron			
Tightening Torque			10 Nm (max.)	15 Nm (max.)	40 Nm (max.)	

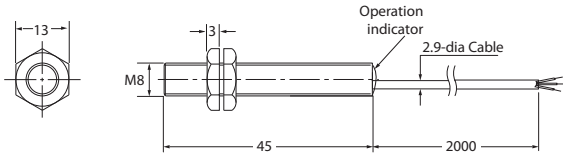
**Note:** Sensing Distance is calculated on the basis of the maximum sensing capacity when tested with a standard test object.

# Sensor Dimension Drawing

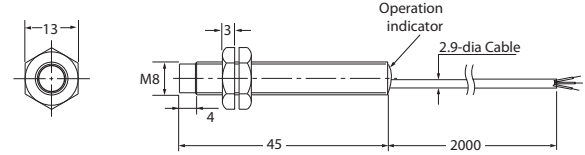
## PQ2-D

All dimensions are in mm

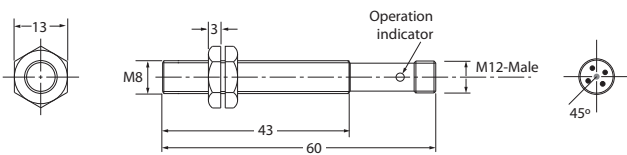
PQ2-DL-M8F-2\_-2M



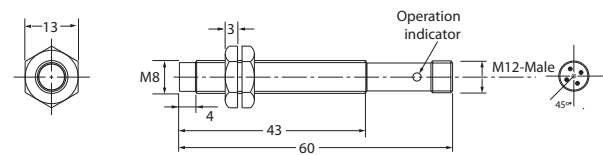
PQ2-DL-M8N-4\_-2M



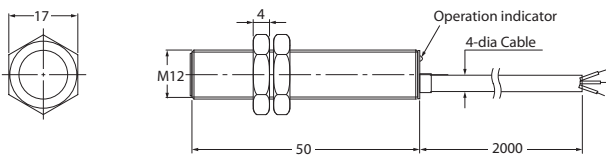
PQ2-DL-M8F-2\_-M12C



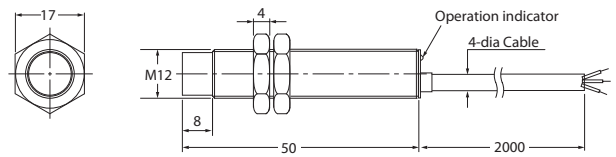
PQ2-DL-M8N-4\_-M12C



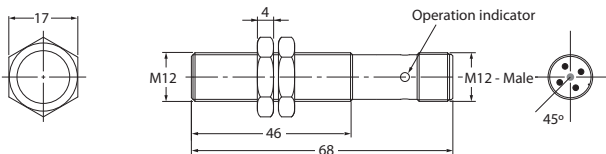
PQ2-DL-M12F-4\_-2M



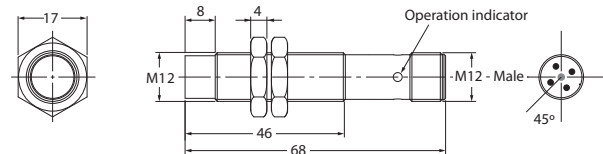
PQ2-DL-M12N-8\_-2M



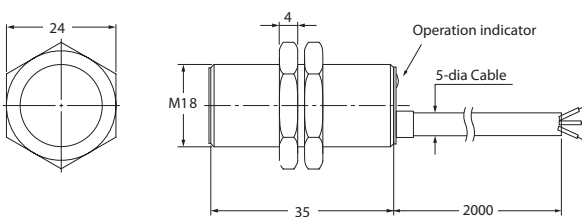
PQ2-DL-M12F-4\_-M12C



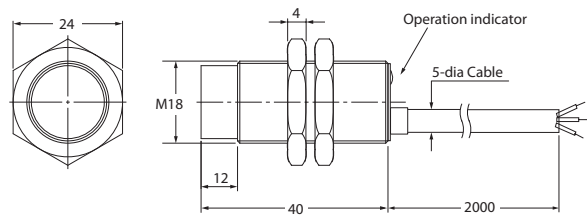
PQ2-DL-M12N-8\_-M12C



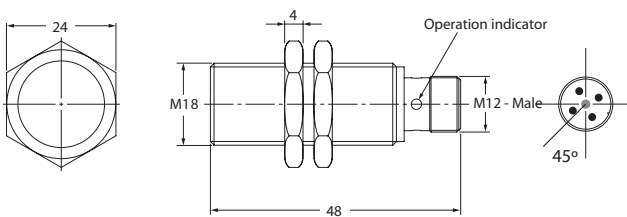
PQ2-DS-M18F-8\_-2M



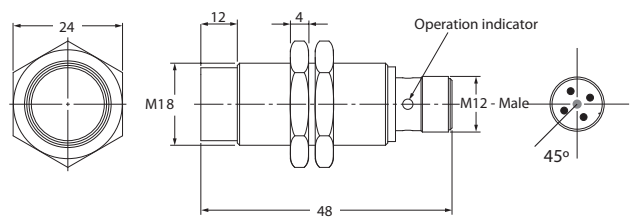
PQ2-DS-M18N-16\_-2M



PQ2-DS-M18F-8\_-M12C



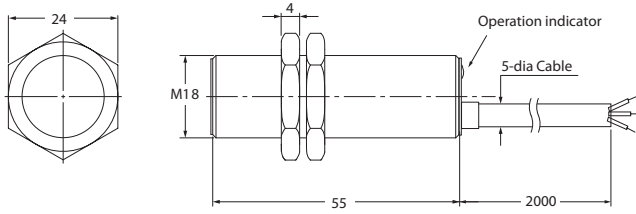
PQ2-DS-M18N-16\_-M12C



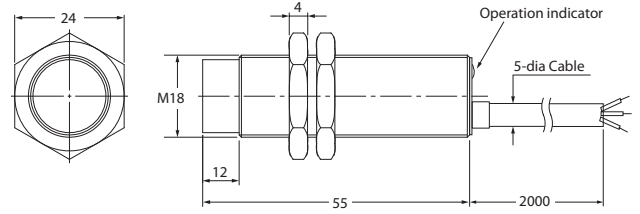
# Sensor Dimension Drawing

## PQ2-D

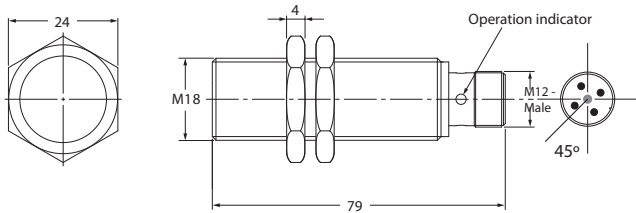
PQ2-DL-M18F-8\_-2M



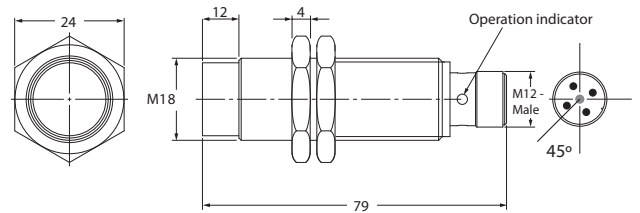
PQ2-DL-M18N-16\_-2M



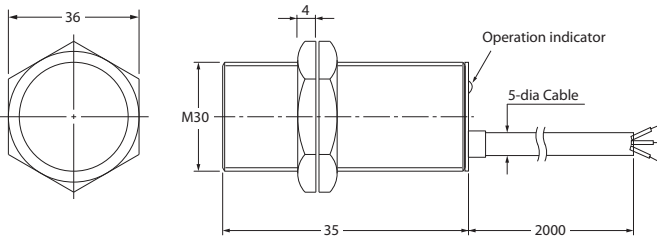
PQ2-DL-M18F-8\_-M12C



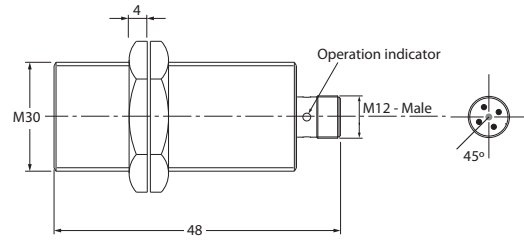
PQ2-DL-M18N-16\_-M12C



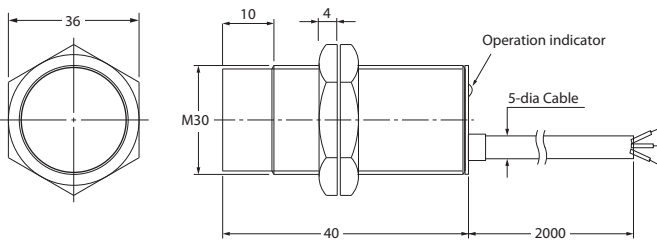
PQ2-DS-M30F-16\_-2M



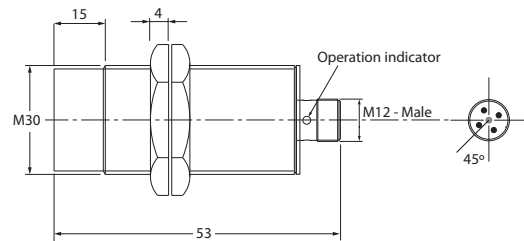
PQ2-DS-M30F-16\_-M12C



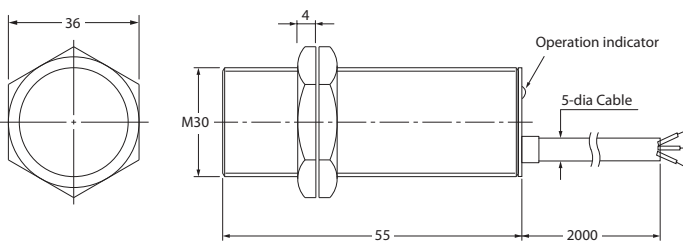
PQ2-DS-M30N-25\_-2M



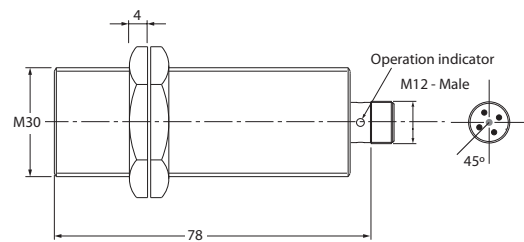
PQ2-DS-M30N-25\_-M12C



PQ2-DL-M30F-16\_-2M



PQ2-DL-M30F-16\_-M12C



# Sensor Dimension Drawing

PQ2-D

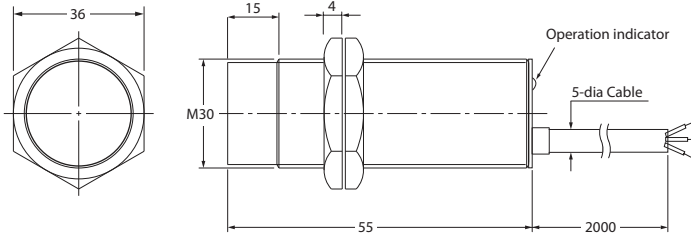
Proximity Sensors

Photoelectric Sensors

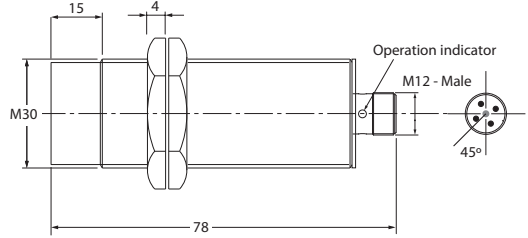
Measurement Sensors

Vision & Safety Sensors

PQ2-DL-M30N-25\_-2M

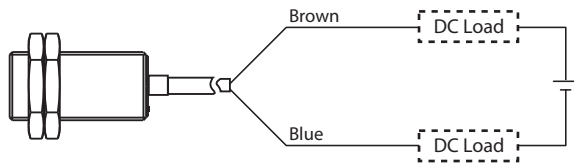


PQ2-DL-M30N-25\_-M12C



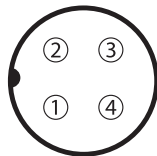
## Connection

◆ NO & NC - DC 2 Wire Type



◆ Connector Type

◆ M12 Connector



- 1 : DC 10~30V
- 2 : Control Output NC
- 3 : 0V
- 4 : Control Output NO

Control

Weighing

Automation

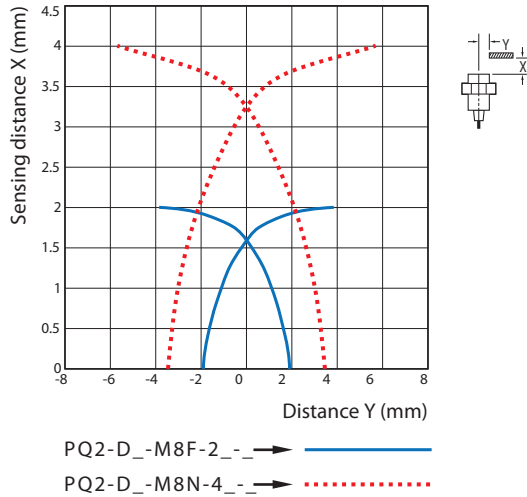
Components

All dimensions are in mm

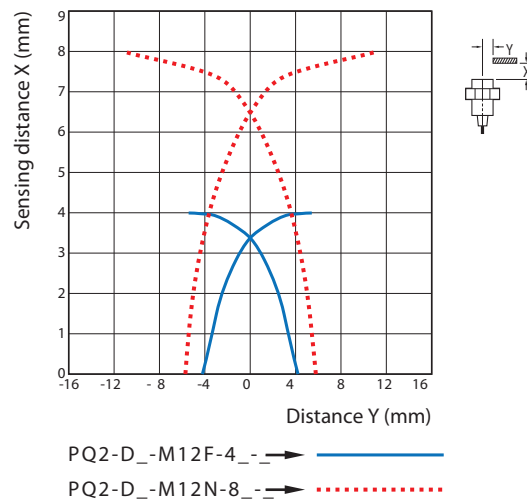
# Operational Range

## PQ2-D

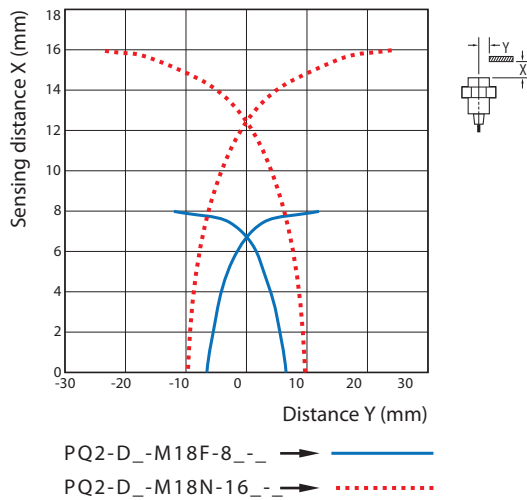
### • PQ2-D\_-M8\_-\_-\_-



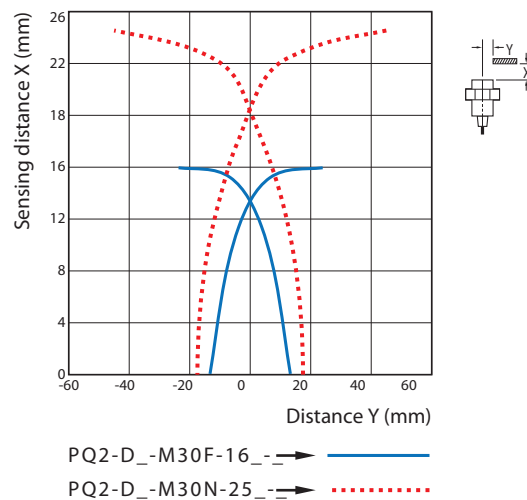
### • PQ2-D\_-M12\_-\_-\_-



### • PQ2-D\_-M18\_-\_-\_-



### • PQ2-D\_-M30\_-\_-\_-



Note: Operational Range testing carried out at room temperature using standard Test Object.

Cat. No. PQ2-D-417

Exclusively Represented by:

Intech Systems Chennai Pvt Ltd  
 S-2, Guindy Industrial Estate  
 Chennai - 600 032. Ph: 4353 8888  
 Email: info@intechchennai.com

[www.inno.sg](http://www.inno.sg)

© INNO, Rights Reserved  
 In the interest of continuous product improvement  
 specifications are subject to change without notice