

Standard Inductive Proximity Sensor

AC/DC 2 Wire

PQ2



SALIENT FEATURES

- ◆ IP - 67, Brass Housing
- ◆ High Tightening Torque
- ◆ AC, DC-2 wire in NO & NC
- ◆ M12, M18 & M30 Models
- ◆ Shielded and Non- Shielded
- ◆ Pre wired & Connector Types
- ◆ DC: 10-30VDC; AC: 20-250VAC

Model Number Legend



PQ2 - - - - -
1 **2** **3** **4** **5** **6** **7**

1. Series

PQ2

2. Body

S: Standard Length
 L: Long Body

3. Housing

M12: M12, Threaded
 M18: M18, Threaded
 M30: M30, Threaded

4. Shield

F: Flush/ Shielded
 N: Non-Flush/ Unshielded

5. Sensing Distance

2: 2 mm
 4: 4 mm
 5: 5 mm
 8: 8 mm
 10: 10 mm
 15: 15 mm

6. Output

DO: 2 wire DC - NO
 DC: 2 wire DC - NC
 AO: 2 wire AC - NO
 AC: 2 wire AC - NC

7. Connection

2M: 2m Cable
 M12C: M12 Connector

#. Accessories included

Check Nut: 1 Pair

Example:

PQ2-S-M30N-15AO-2M

PQ2 Series - Standard Length, M30, Non- Flush Sensor - 15mm Sensing Distance, AC 2 wire (NO) - 2 meter Cable

NOTE: Contact us for models not shown in catalogue.
 Connector cables are sold separately; look in CC series catalogue for the same (www.inno.sg/cc).

Size		M12	M18	M30	
Model	Flush	DC - NO	PQ2-_-M12F-2DO-_-	PQ2-_-M18F-5DO-_-	PQ2-_-M30F-10DO-_-
		DC - NC	PQ2-_-M12F-2DC-_-	PQ2-_-M18F-5DC-_-	PQ2-_-M30F-10DC-_-
		AC - NO	-	PQ2-_-M18F-5AO-_-	PQ2-_-M30F-10AO-_-
		AC - NC	-	PQ2-_-M18F-5AC-_-	PQ2-_-M30F-10AC-_-
	Non-Flush	DC - NO	PQ2-_-M12N-4DO-_-	PQ2-_-M18N-8DO-_-	PQ2-_-M30N-15DO-_-
		DC - NC	PQ2-_-M12N-4DC-_-	PQ2-_-M18N-8DC-_-	PQ2-_-M30N-15DC-_-
		AC - NO	-	PQ2-_-M18N-8AO-_-	PQ2-_-M30N-15AO-_-
		AC - NC	-	PQ2-_-M18N-8AC-_-	PQ2-_-M30N-15AC-_-
Sensing Distance	Flush	2mm	5mm	10mm	
	Non-Flush	4mm	8mm	15mm	
Standard Sensing Target		Iron, Ø12x1mm	Iron, Ø18x1mm	Iron, Ø30x1mm	
Hysteresis		± 15%			
Response Frequency	Flush	2000Hz/0.1ms (AC: 25Hz/10ms)	1000Hz/0.2ms (AC: 25Hz/10ms)	300Hz/0.5ms (AC: 25Hz/10ms)	
	Non-Flush	1000Hz/0.2ms (AC: 25Hz/10ms)	500Hz/0.5ms (AC: 25Hz/10ms)	150Hz/1ms (AC: 25Hz/10ms)	
Supply Voltage		DC Type: 10 - 30 VDC; AC Type: 20-250VAC			
Leakage Current		DC Type: < 0.1mA; AC Type: < 1.8mA			
Connection		2 meter Pre-wired Cable/ M12 Male Connector depending on model			
Output	Type	AC/ DC 2 Wire in NO/ NC depending on model			
	Switching Capacity	DC Type: max. 200mA; AC Type: max. 400mA			
	Residual Voltage	DC Type: max. 3 V; AC Type: max. 10V			
	No Load Current	DC Type: < 10mA; AC Type: < 1.8mA			
Indication		Operation: Yellow LED			
Protection Circuits		Short Circuit Protection (DC Type Only)			
Insulation Resistance		min. 50M Ω (at 500VDC)			
Dielectric Strength		500 VAC, 50/60 Hz for 1 minute between current carry parts and case			
Voltage Influence		± 5% max. of sensing distance (ref. sensing distance taken at 24VDC)			
Temperature Influence		± 10% max. of sensing distance (ref. sensing distance taken at 25°C)			
Vibration Resistance		10 - 55Hz, 1mm for 2 hours in X, Y, Z directions (destruction)			
Shock Resistance		20 G (10 times) in X, Y, Z direction for 3 times (destruction)			
Ambient Temperature		Operation: -25° ~ 70° C; Storage: -30° ~ 80° C (non-freezing; non-condensing)			
Ambient Humidity		Operation: 40 ~ 85% RH; Storage: 35 ~ 95% RH (non- condensing)			
Protection Class		IP67			
Weight	Standard Length	Prewired (DC/ AC)	approx. 60g / 77g	approx. 135g / 155g	approx. 182g / 210g
		Connector (DC/ AC)	approx. 25g / 32g	approx. 52g / 55g	approx. 120g / 120g
	Long Body	Prewired (DC/ AC)	approx. 65g / 77g	approx. 150g / 162g	approx. 215g / 250g
		Connector (DC/ AC)	approx. 35g / 32g	approx. 95g / 70g	approx. 185g / 185g
Material		Head: PBT(flush)/ POM (non-flush); Tube: Nickel plated Brass			
Tightening Torque		15 Nm (max.)	30 Nm (max.)		

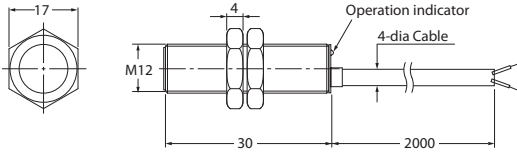
Note: Sensing Distance is calculated on the basis of the maximum sensing capacity when tested with a standard test object.

Sensor Dimension Drawing

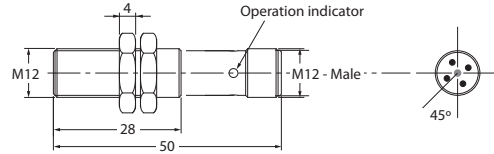
PQ2

All dimensions are in mm

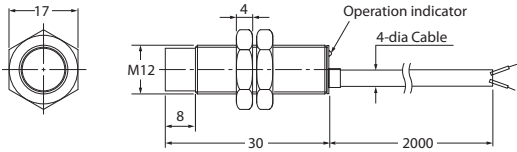
PQ2-S-M12F-2_-2M



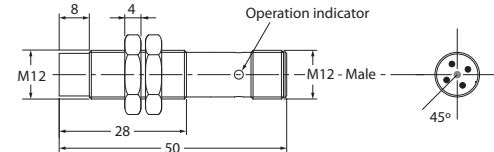
PQ2-S-M12F-2_-M12C



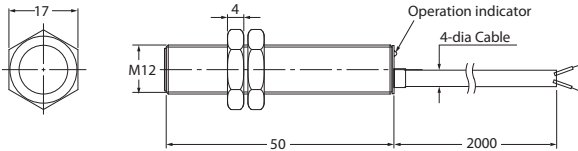
PQ2-S-M12N-4_-2M



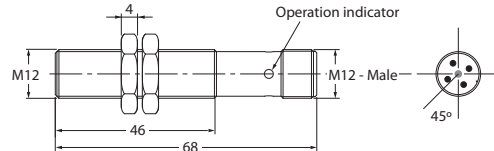
PQ2-S-M12N-4_-M12C



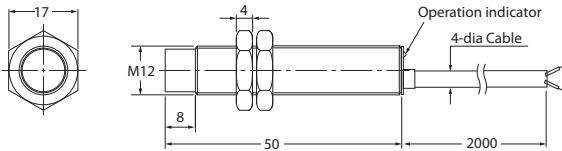
PQ2-L-M12F-2_-2M



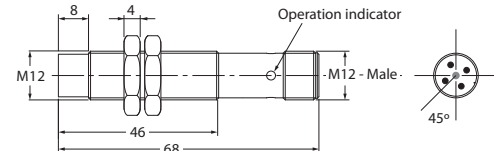
PQ2-L-M12F-2_-M12C



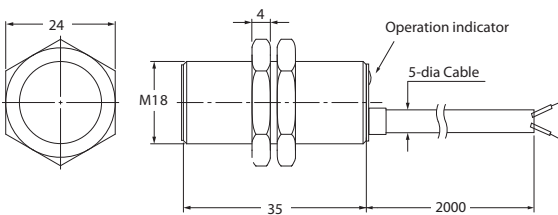
PQ2-L-M12N-4_-2M



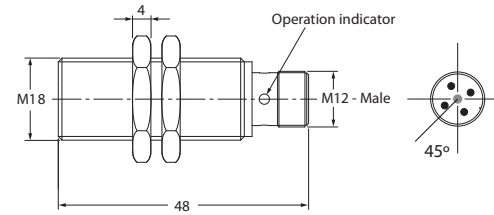
PQ2-L-M12N-4_-M12C



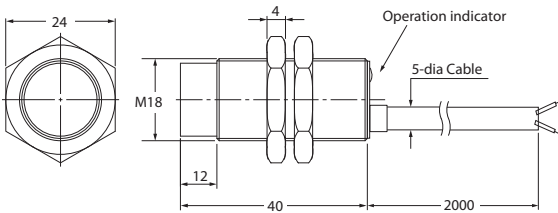
PQ2-S-M18F-5_-2M



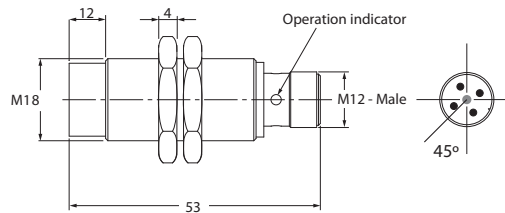
PQ2-S-M18F-5_-M12C



PQ2-S-M18N-8_-2M



PQ2-S-M18N-8_-M12C



Sensor Dimension Drawing

PQ2

Proximity Sensors

Photoelectric Sensors

Measurement Sensors

Vision & Safety Sensors

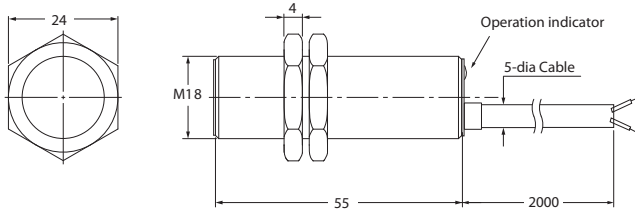
Control

Weighing

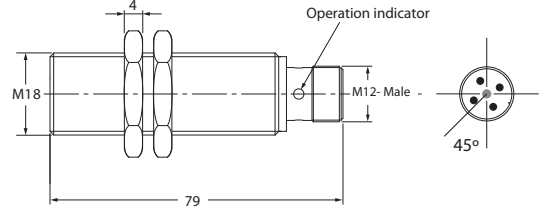
Automation

Components

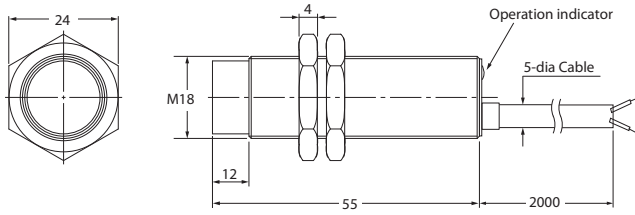
PQ2-L-M18F-5_-2M



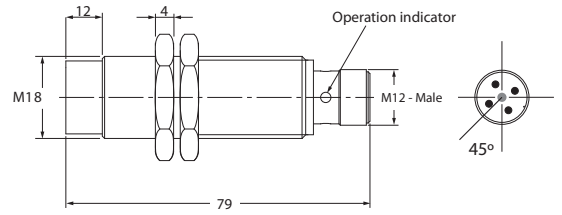
PQ2-L-M18F-5_-M12C



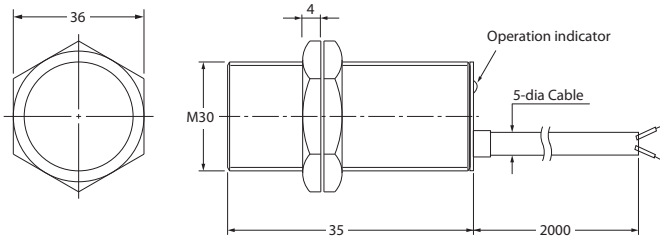
PQ2-L-M18N-8_-2M



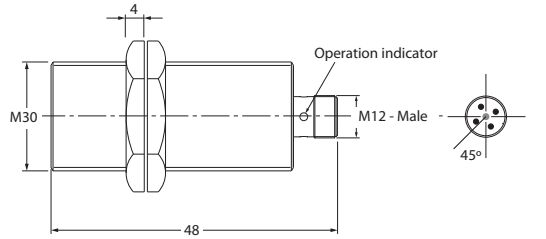
PQ2-L-M18N-8_-M12C



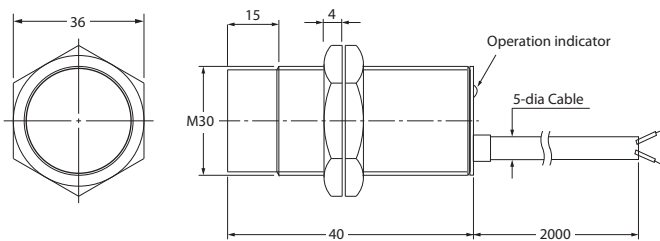
PQ2-N-M30F-10_-2M



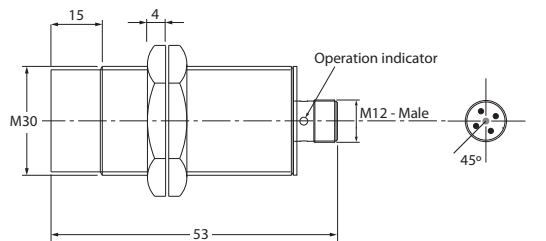
PQ2-N-M30F-10_-M12C



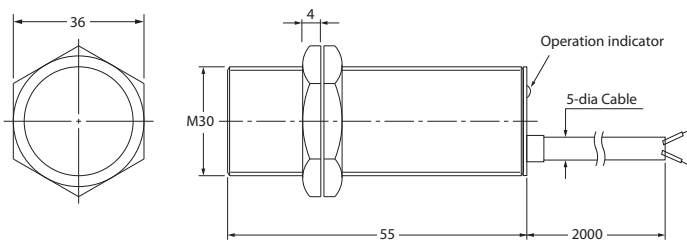
PQ2-N-M30N-15_-2M



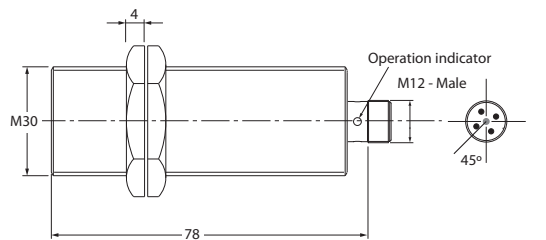
PQ2-N-M30N-15_-M12C



PQ2-L-M30F-10_-2M

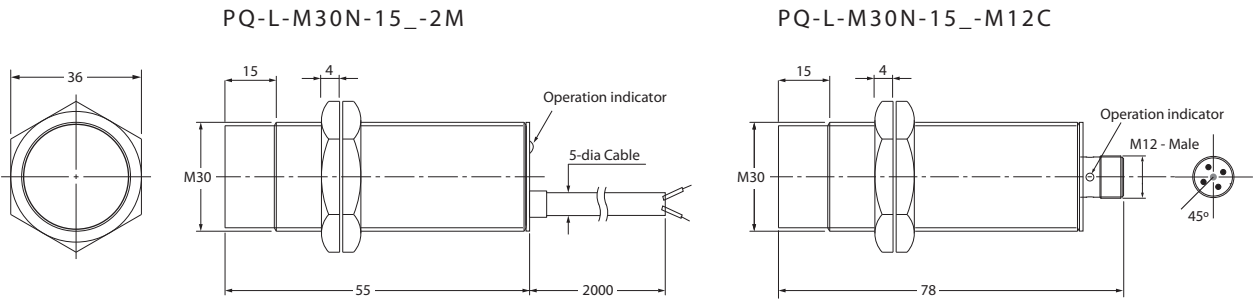


PQ2-L-M30F-10_-M12C



Sensor Dimension Drawing

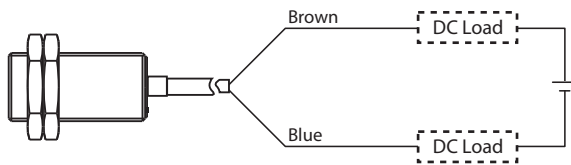
PQ2



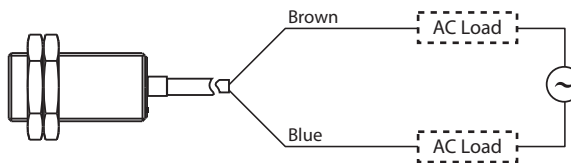
All dimensions are in mm

Connection

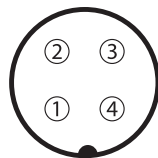
◆ NO & NC - DC 2 Wire Type



◆ NO & NC - AC 2 Wire Type



◆ Connector Type



- 1 : Connection
- 2 : -
- 3 : Connection
- 4 : -

Note: Connector Cable is not supplied along with unit

Control Output Diagram

PQ2

Proximity Sensors

Photoelectric Sensors

Measurement Sensors

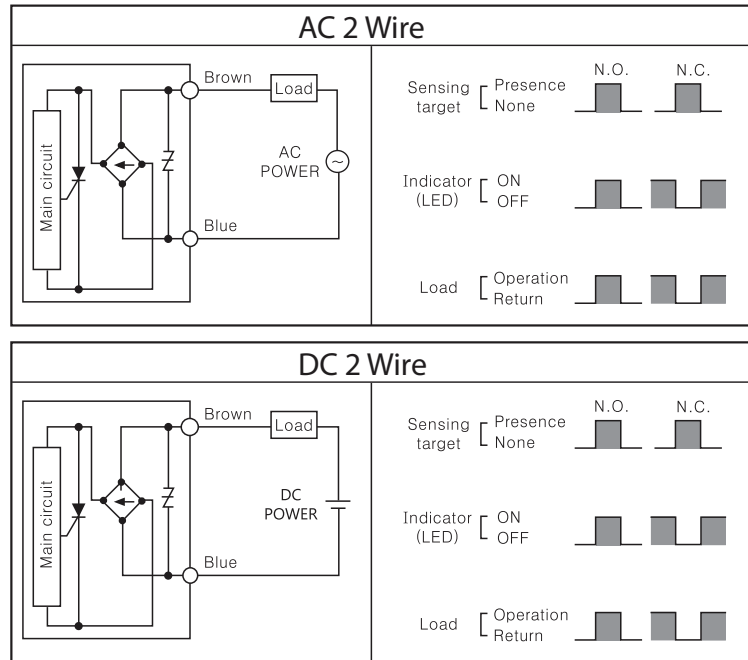
Vision & Safety Sensors

Control

Weighing

Automation

Components



Exclusively Represented by:

Intech Systems Chennai Pvt Ltd
 S-2, Guindy Industrial Estate
 Chennai - 600 032. Ph: 4353 8888
 Email: info@intechchennai.com

innoTM
www.inno.sg

© INNO, Rights Reserved
 In the interest of continuous product improvement
 specifications are subject to change without notice

Cat. No. PQ2-C14