

Inductive Proximity Sensor

Double Sensing Distance

PQJ-D



SALIENT FEATURES

- ◆ IP - 67, Brass Housing
- ◆ Short - Circuit protection
- ◆ Reverse Polarity Protection
- ◆ Shielded and Non - Shielded
- ◆ Prewired and Connector Type
- ◆ M8, M12, M18 and M30 Models

Model Number Legend



PQJ-D □ - □□ - □□ - □
 1 2 3 4 5 6 7 8

1. Series

PQJ

2. Type

D: Double Sensing

3. Body

S: Standard Length

L: Long Body

4. Housing

M8: M8, Threaded

M12: M12, Threaded

M18: M18, Threaded

M30: M30, Threaded

5. Shield

F: Flush/ Shielded

N: Non-Flush/ Unshielded

6. Sensing Distance

2: 2 mm

4: 4 mm

8: 8 mm

15: 15 mm

16: 16 mm

30: 30 mm

7. Output

NO: NPN - NO

PO: PNP - NO

NC: NPN - NC

PC: PNP - NC

8. Connection

2M: 2m Cable

M8C: M8 Connector

M12C: M12 Connector

#. Accessories included

Check Nut: 1 Pair

Example:

PQJ-DS-M18F-8PO-M12C

PQJ Series - Double Sensing, Standard Length, M18, Flush - 8mm Sensing Distance, PNP NO - M12 Connector

NOTE: Contact us for models not shown in catalogue.
 Connector cables are sold separately; look in CC series catalogue for the same (www.inno.sg/cc).

Size			M8	M12	M18	M30
Model	Flush	NPN - NO	PQJ-D_-M8F-2NO- _	PQJ-D_-M12F-4NO- _	PQJ-D_-M18F-8NO- _	PQJ-D_-M30F-15NO- _
		NPN - NC	PQJ-D_-M8F-2NC- _	PQJ-D_-M12F-4NC- _	PQJ-D_-M18F-8NC- _	PQJ-D_-M30F-15NC- _
		PNP - NO	PQJ-D_-M8F-2PO- _	PQJ-D_-M12F-4PO- _	PQJ-D_-M18F-8PO- _	PQJ-D_-M30F-15PO- _
		PNP - NC	PQJ-D_-M8F-2PC- _	PQJ-D_-M12F-4PC- _	PQJ-D_-M18F-8PC- _	PQJ-D_-M30F-15PC- _
	Non- Flush	NPN - NO	PQJ-D_-M8N-4NO- _	PQJ-D_-M12N-8NO- _	PQJ-D_-M18N-16NO- _	PQJ-DL-M30N-30NO- _
		NPN - NC	PQJ-D_-M8N-4NC- _	PQJ-D_-M12N-8NC- _	PQJ-D_-M18N-16NC- _	PQJ-DL-M30N-30NC- _
		PNP - NO	PQJ-D_-M8N-4PO- _	PQJ-D_-M12N-8PO- _	PQJ-D_-M18N-16PO- _	PQJ-DL-M30N-30PO- _
		PNP - NC	PQJ-D_-M8N-4PC- _	PQJ-D_-M12N-8PC- _	PQJ-D_-M18N-16PC- _	PQJ-DL-M30N-30PC- _
Sensing Distance	Flush	2mm	4mm	8mm	15mm	
	Non- Flush	4mm	8mm	16mm	30mm	
Standard Sensing Target			Iron, \varnothing 8x1mm	Iron, \varnothing 12x1mm	Iron, \varnothing 18x1mm	Iron, \varnothing 30x1mm
Hysteresis			± 10%			
Response Frequency/ Time	Flush	1500 Hz/ 0.1ms	1000 Hz/ 0.1ms	500 Hz/ 0.2ms	250 Hz/ 0.5ms	
	Non- Flush	1000 Hz/ 0.1ms	800 Hz/ 0.2ms	400 Hz/ 0.5ms	100 Hz/ 1ms	
Supply Voltage			10-30VDC (ripple included)			
Current Consumption			< 10mA			
Connection			PQJ-D_- _ _ _ - 2M - 2 meter pre-wired; PQJ-D_- _ _ _ - M8C - M8 Connector; PQJ-D_- _ _ _ - M12C - M12 Connector			
Output	Type	NPN or PNP - NO/ NC depending on the model				
	Switching Capacity	200mA; Overload trip: 220mA				
	Leakage Current	< 0.01mA				
	Voltage Drop	< 1.5VDC				
Indication			Operation: Yellow LED			
Protection Circuits			Reverse power supply polarity; reversed output polarity; Short circuit;			
Dielectric Strength			1000 VAC, 50/60 Hz for 1 minute between current carry parts and case			
Voltage Influence			± 5% max. of sensing distance (ref. sensing distance taken at 24VDC)			
Temperature Influence			± 10% max. of sensing distance (ref. sensing distance taken at 25°C)			
Vibration Resistance			10 - 55Hz, 1mm for 2 hours in X, Y, Z directions (destruction)			
Shock Resistance			50 G (10 times) in X, Y, Z direction for 3 times (destruction)			
Ambient Temperature			Operation: -25° ~ 70° C; Storage: -30° ~ 80° C (non-freezing; non-condensing)			
Ambient Humidity			Operation: 40 ~ 85% RH; Storage: 35 ~ 95% RH (non- condensing)			
Protection Class			IP-67			
Weight	Standard Length	Prewired	approx. 65g	approx. 75g	approx. 95g	approx. 160g
		Connector	approx. 20g	approx. 35g	approx. 60g	approx. 140g
	Long Body	Prewired	approx. 65g	approx. 80g	approx. 110g	approx. 210g
		Connector	approx. 20g	approx. 40g	approx. 80g	approx. 160g
Cable			2M, 4 \varnothing 3*0.15	2M, 4 \varnothing 3*0.25	2M, 4 \varnothing 3*0.34	2M, 4 \varnothing 3*0.34
Material			Head: PBT; Tube: Nickel plated Brass (SS for M8); Nuts: Nickel plated Brass;			
Tightening Torque			7 Nm (max.)	12 Nm (max.)	30 Nm (max.)	50 Nm (max.)

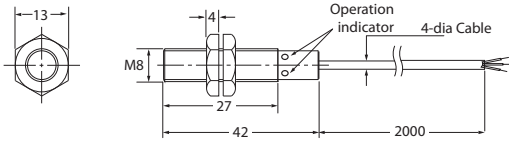
Note: Sensing Distance is calculated on the basis of the maximum sensing capacity when tested with a standard test object.

Sensor Dimension Drawing

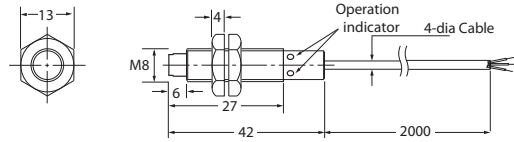
PQJ-D

All dimensions are in mm

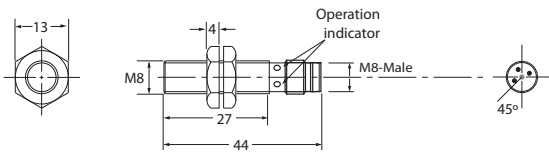
PQJ-DS-M8F-2_-2M



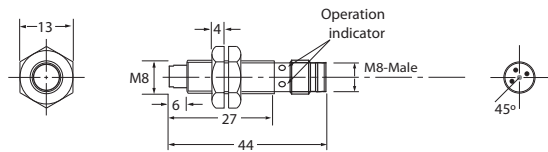
PQJ-DS-M8N-4_-2M



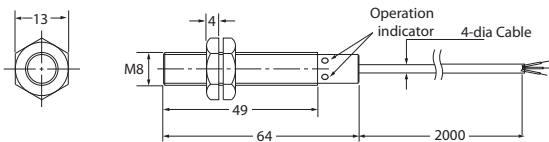
PQJ-DS-M8F-2_-M8C



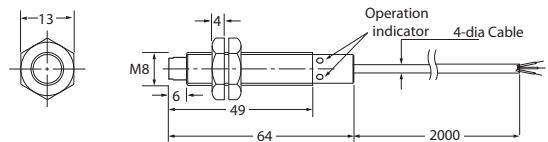
PQJ-DS-M8N-4_-M8C



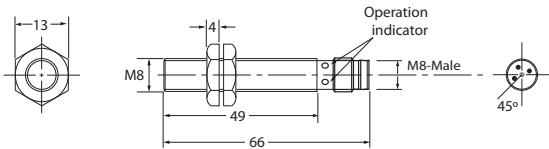
PQJ-DL-M8F-2_-2M



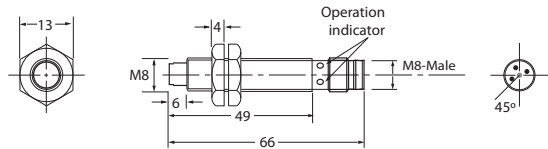
PQJ-DL-M8N-4_-2M



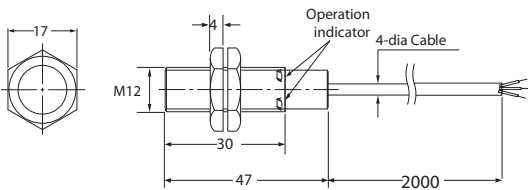
PQJ-DL-M8F-2_-M8C



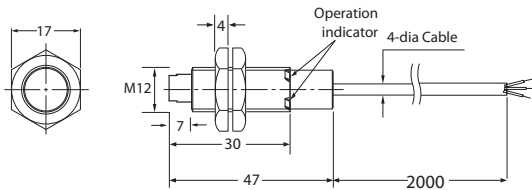
PQJ-DL-M8N-4_-M8C



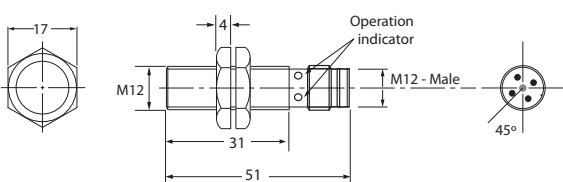
PQJ-DS-M12F-4_-2M



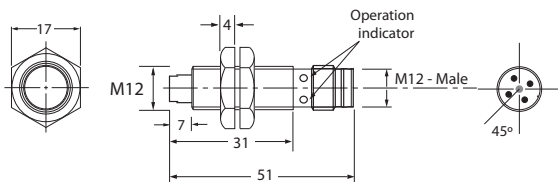
PQJ-DS-M12N-8_-2M



PQJ-DS-M12F-4_-M12C



PQJ-DS-M12N-8_-M12C



Sensor Dimension Drawing

PQJ-D

Proximity Sensors

Photoelectric Sensors

Measurement Sensors

Vision & Safety Sensors

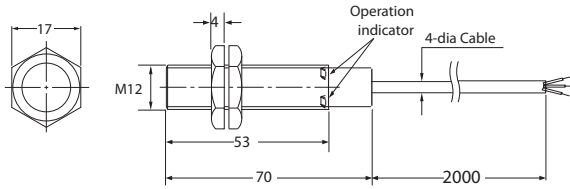
Control

Weighing

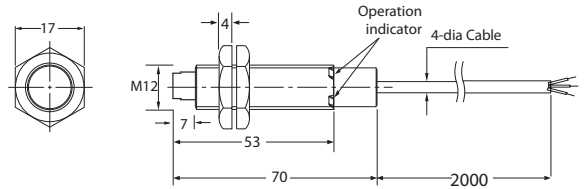
Automation

Components

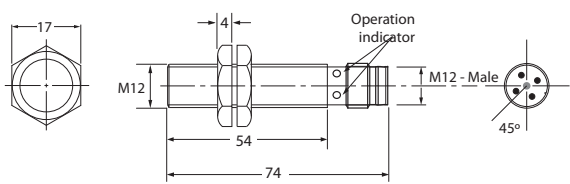
PQJ-DL-M12F-4_-2M



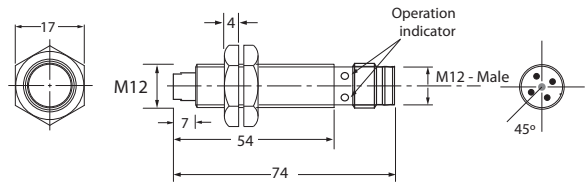
PQJ-DL-M12N-8_-2M



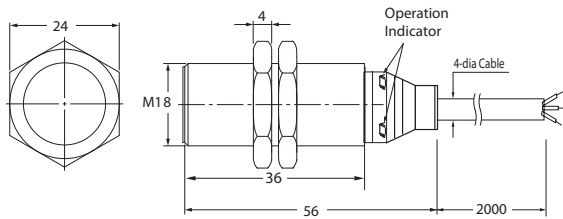
PQJ-DL-M12F-4_-M12C



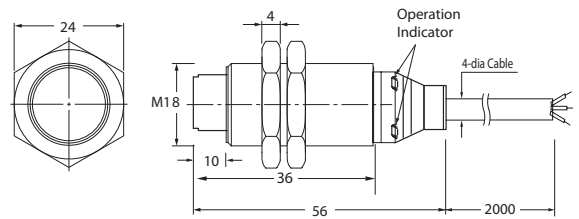
PQJ-DL-M12N-8_-M12C



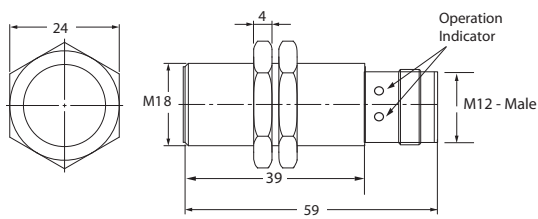
PQJ-DS-M18F-8_-2M



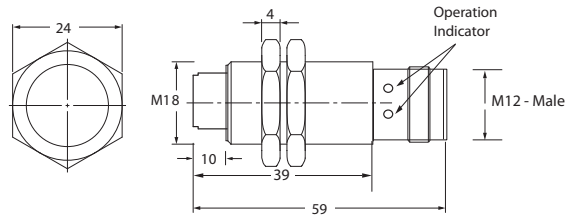
PQJ-DS-M18N-16_-2M



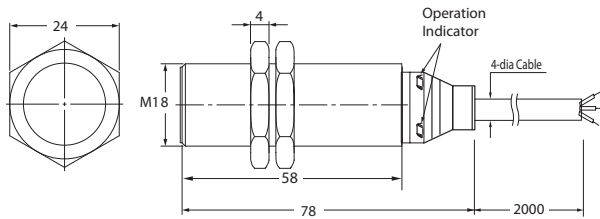
PQJ-DS-M18F-8_-M12C



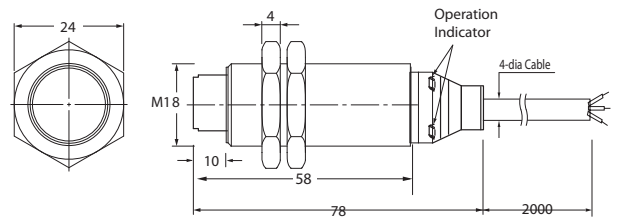
PQJ-DS-M18N-16_-M12C



PQJ-DL-M18F-8_-2M



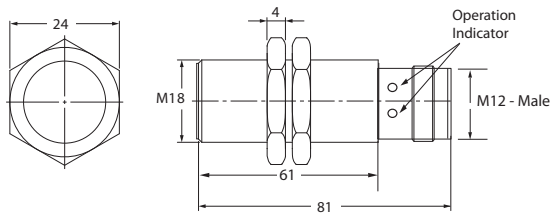
PQJ-DL-M18N-16_-2M



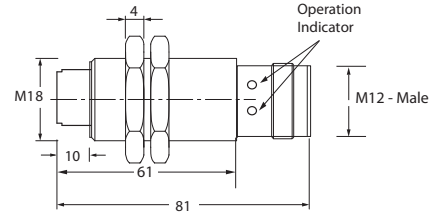
Sensor Dimension Drawing

PQJ-D

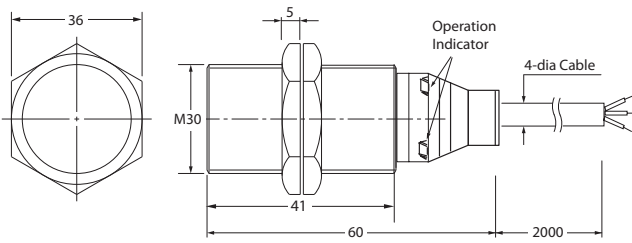
PQJ-DL-M18F-8_-M12C



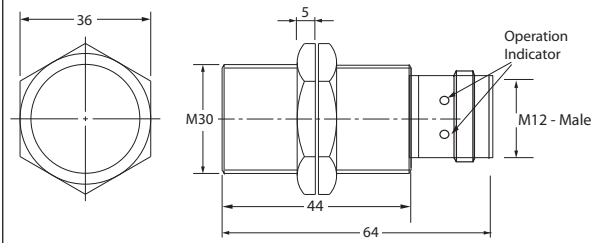
PQJ-DL-M18N-16_-M12C



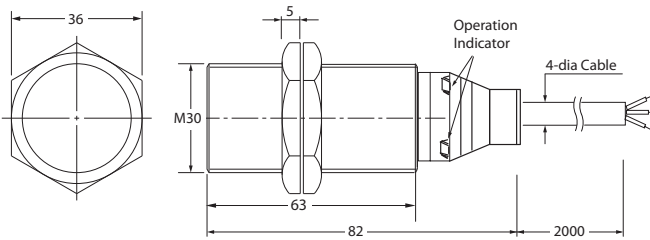
PQJ-DS-M30F-15_-2M



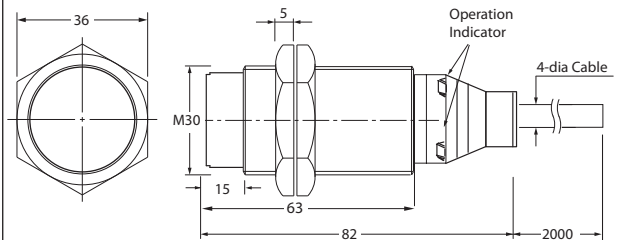
PQJ-DS-M30F-15_-M12C



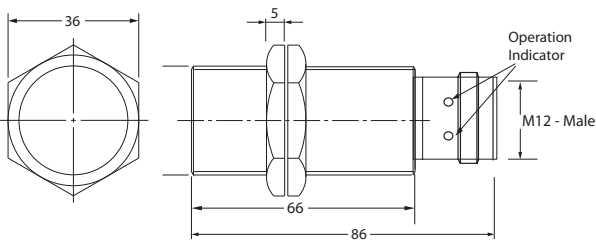
PQJ-DL-M30F-15_-2M



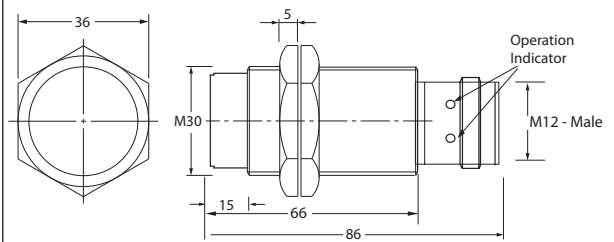
PQJ-DL-M30N-30_-2M



PQJ-DL-M30F-15_-M12C

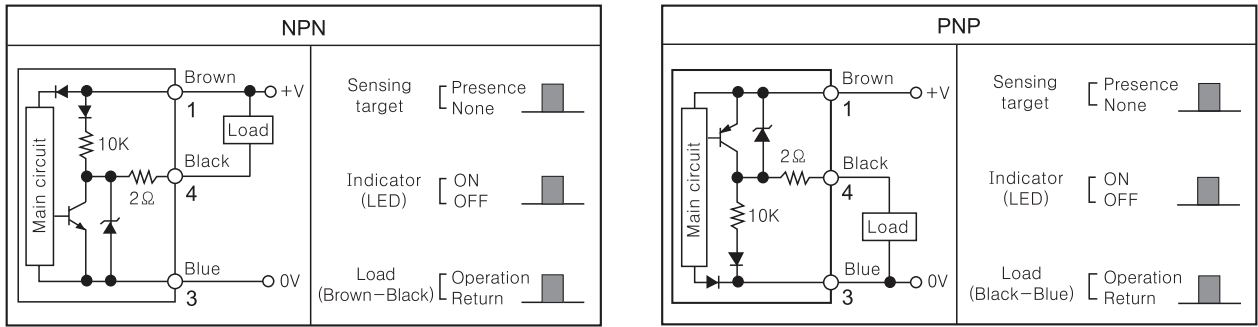


PQJ-DL-M30N-30_-M12C



All dimensions are in mm

Control Output Diagram

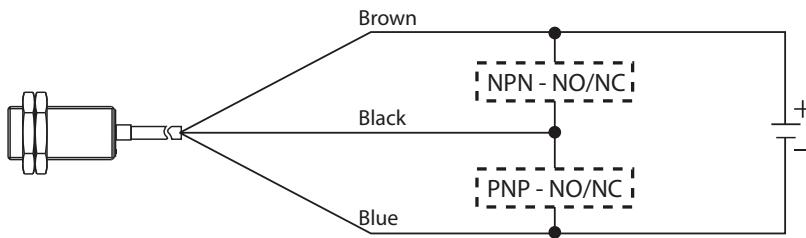


Brown : DC 10~30V
 Blue : 0V
 Black : Control Output

Note: 1, 3, 4 are the Pin numbers for the M12 Connector Models;
 (1), (2), (3) are the Pin numbers for the M8 Connector Models.

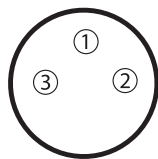
Connection

◆ Cable Type



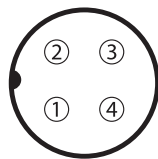
◆ Connector Type

◆ M8 Connector



1 : DC 10~30V
 2 : 0V
 3 : Control Output

◆ M12 Connector

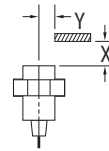
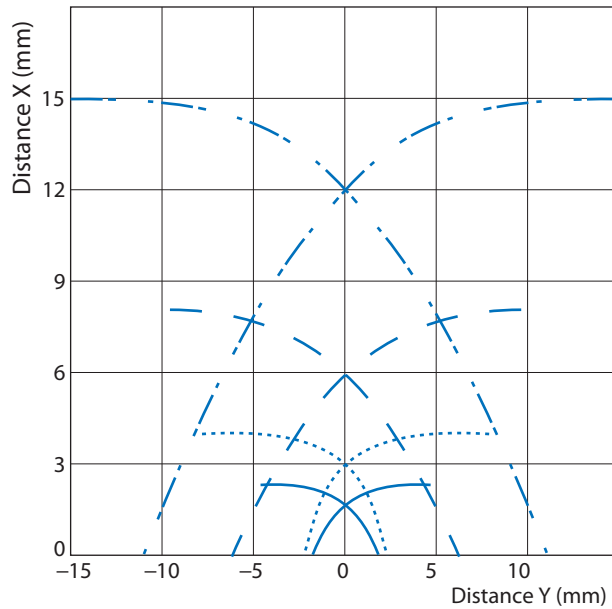


1 : DC 10~30V
 2 : Control Output NC
 3 : 0V
 4 : Control Output NO

Operational Range

PQJ-D

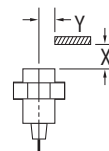
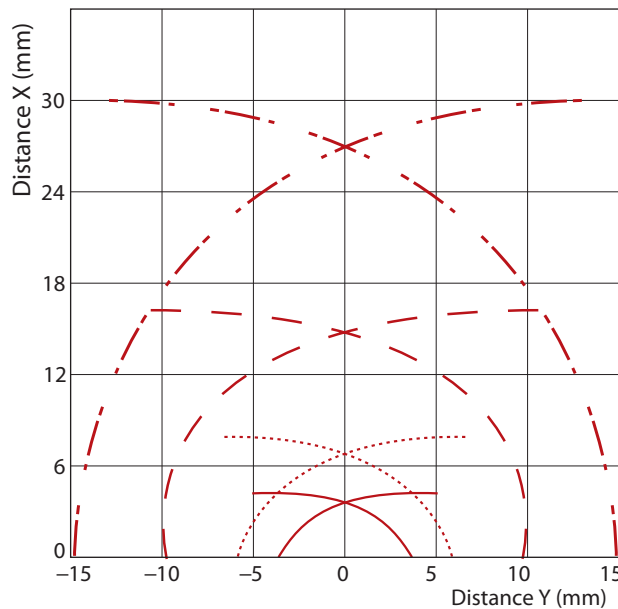
• Flush Type



Note: Operational Range testing carried out at room temperature using standard Test Object.

- PQJ-D-M8F-2_ _ →
- PQJ-D-M12F-4_ _ →
- PQJ-D-M18F-8_ _ →
- PQJ-D-M30F-15_ _ →

• Non-Flush Type



- PQJ-D-M8N-4_ _ →
- PQJ-D-M12N-8_ _ →
- PQJ-D-M18N-16_ _ →
- PQJ-DL-M30N-30_ _ →

Exclusively Represented by:

Intech Systems Chennai Pvt Ltd
 S-2, Guindy Industrial Estate
 Chennai - 600 032. Ph: 4353 8888
 Email: info@intechchennai.com

www.inno.sg

© INNO, Rights Reserved
 In the interest of continuous product improvement
 specifications are subject to change without notice

Cat. No. PQJ-D-C14

- Proximity Sensors
- Photoelectric Sensors
- Measurement Sensors
- Vision & Safety Sensors
- Control
- Weighing
- Automation
- Components