

# Industrial Tower Lamps

Ø45mm; Bulb Type

# TLK



## Model Number Legend

**TLK** -    -                   -     
**1 2 3 4 5 6 7 8**

<b>1. Series</b>	<b>4. 2<sup>nd</sup> Stack Lens Color</b>	<b>6. 4<sup>th</sup> Stack Lens Color</b>	<b>8. Power Supply</b>
TLK	R: Red	R: Red	12AD: 12VAC/ DC
	G: Green	G: Green	24AD: 24VAC/ DC
<b>2. Type</b>	Y: Yellow	Y: Yellow	220AC: 220 VAC
B: Direct Mount (no pole)	B: Blue	B: Blue	
P: Direct Mount	C: Clear	C: Clear	
S: Panel Mount	N: None	N: None	
<b>3. 1<sup>st</sup> Stack Lens Color</b>	<b>5. 3<sup>rd</sup> Stack Lens Color</b>	<b>7. 5<sup>th</sup> Stack Lens Color</b>	
R: Red	R: Red	R: Red	
G: Green	G: Green	G: Green	
Y: Yellow	Y: Yellow	Y: Yellow	
B: Blue	B: Blue	B: Blue	
C: Clear	C: Clear	C: Clear	
	N: None	N: None	

**Example:**

TLK-B-RYGNN-24AD

TLK Series - Direct Mounting Type without Pole - 3 Stack with Red, Yellow, Green - 24VAC/ DC power supply

**NOTE:** Contact us for models not shown in catalogue.

## SALIENT FEATURES

- ◆ Ø 45mm
- ◆ 5 Std. Lens Colors
- ◆ Replaceable Bulb Type
- ◆ Multiple Mounting Options
- ◆ One to Five Stack Light models
- ◆ Prizm-cut lenses for high brightness

Sensing

Control

Weighing

Automation

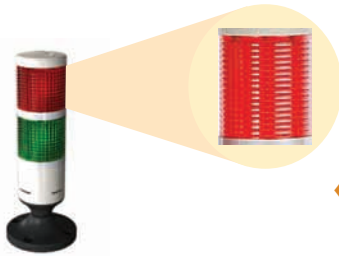
Power Supplies

Switching

Tower Lamps

Cables & Electrodes

Accessories



### ◆ Superior Brightness!

All TLK series tower lamps have a double cut prism design that ensures a higher degree of transparency in comparison with other lights and reflectivity enabling a superior brightness level.

### ◆ Modular Construction

The TLK series tower lamps have a modular design, to change the bulb or lens color we just have to unscrew the top cover and the rest of the parts come off when it is lifted. Replace lens and rotate till the lens sits in the provided notch before re-screwing the top cover.

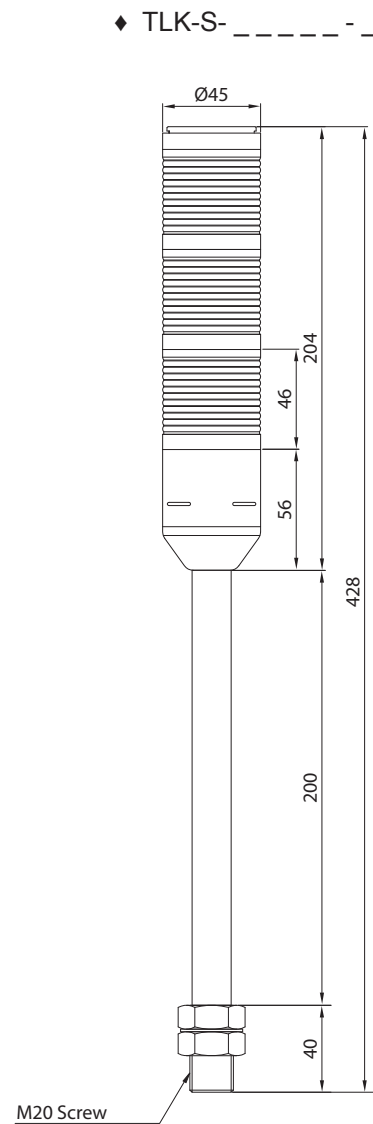
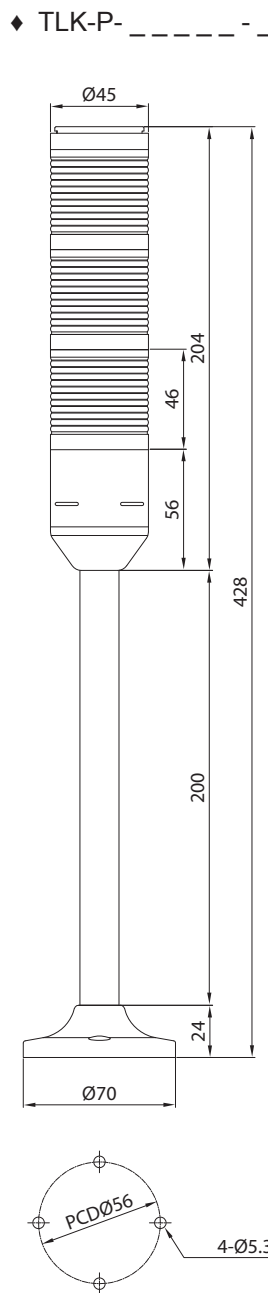
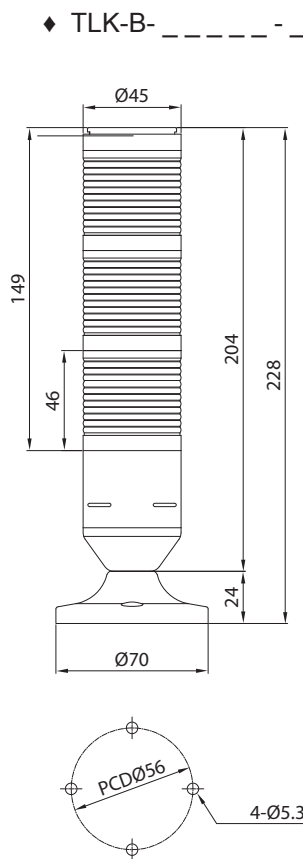
## Ratings and Specifications

Models		TLK-B-_____ - _	TLK-P-_____ - _	TLK-S-_____ - _
Mounting		Direct Mounting		Panel Mounting
Extension Pole		NA	Yes	Yes
No. of Stacks		1 ~ 5 (depending on model)		
Lens Color		Red, Green, Yellow (Amber), Blue, Clear (Transparent)		
Bulb Type		Incandescent bulb with Single contact & Bayonet Base		
Bulb Ratings	TLK-_-_____ - 12AD	12V5W		
	TLK-_-_____ - 24AD	24V5W		
	TLK-_-_____ - 220AC	220V5W		
Power Supply	TLK-_-_____ - 12AD	12V AC/ DC ±10% ripple		
	TLK-_-_____ - 24AD	24V AC/ DC ±10% ripple		
	TLK-_-_____ - 220AC	200 ~ 240 VAC		
Current Consumption	1 Stack	12V AC/ DC: 0.8A; 24V AC/ DC: 0.4A; 220VAC: 0.04A		
	2 Stack	12V AC/ DC: 1.7A; 24V AC/ DC: 0.8A; 220VAC: 0.08A		
	3 Stack	12V AC/ DC: 2.5A; 24V AC/ DC: 1.2A; 220VAC: 0.12A		
	4 Stack	12V AC/ DC: 3.3A; 24V AC/ DC: 1.7A; 220VAC: 0.17A		
	5 Stack	12V AC/ DC: 4.2A; 24V AC/ DC: 2.1A; 220VAC: 0.2A		
Shock Resistance		10 G- X,Y, Z three directions		
Ambient Temperature		Operation: -25° ~ 50°C; Storage: -30° ~ 60°C (non- freezing; non- condensing)		
Ambient Humidity		Operation: 35 ~ 85% RH; Storage: 35 ~ 90% RH (non- condensing)		
Protection Class		IP51		
Material		Housing: ABS, Lens: Acrylic or Eqv., Pole: Coated MS tube		

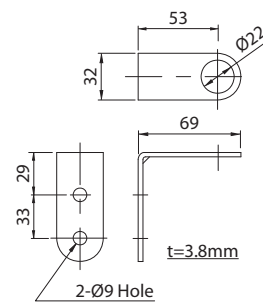
# Dimension Drawing

TLK

**Note:** Three stack model is taken for reference in all diagrams, increase or decrease of each stack will lead to a corresponding increase/ decrease of 46mm in the overall product height. The Height of each lens segment is 46mm



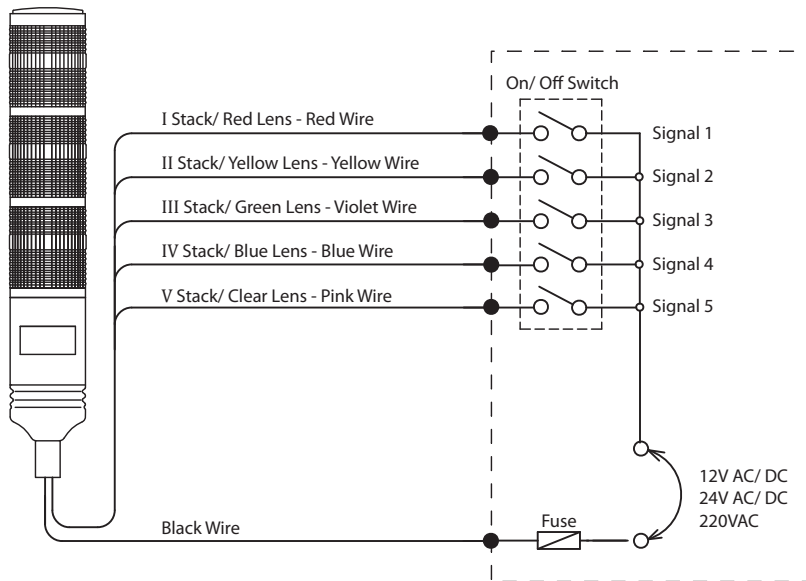
◆ DS25  
(Mounting Bracket for TLK-S- \_\_\_\_\_)



All dimensions are in mm

- Sensing
- Control
- Weighing
- Automation
- Power Supplies
- Switching
- Tower Lamps
- Connector Cables
- Accessories

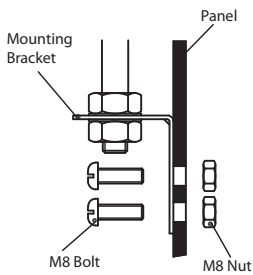
## Connection



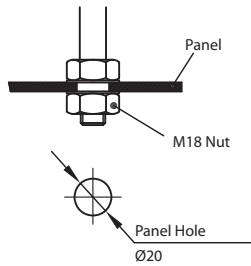
### Factory Default Stack Color List

1 Stack	: Red	4 Stack	: Red, Yellow, Green, Blue
2 Stack	: Red, Green	5 Stack	: Red, Yellow, Green, Blue, Clear
3 Stack	: Red, Yellow, Green		

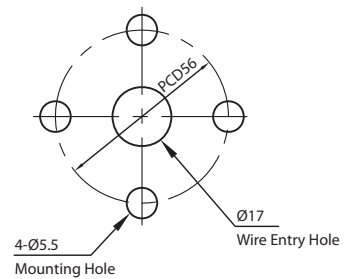
## Mounting



Side Mounting & Installation for TLK-S-\_\_\_\_\_



Top Mounting & Installation for TLK-S-\_\_\_\_\_



Base Mounting Panel Cut-Out for TLK-B/ P-\_\_\_\_\_

Exclusively Represented by:

Intech Systems Chennai Pvt Ltd  
 S-2, Guindy Industrial Estate  
 Chennai - 600 032. Ph: 4353 8888  
 Email: info@intechchennai.com

**inno**<sup>TM</sup>  
 www.inno.sg

© INNO, Rights Reserved  
 In the interest of continuous product improvement  
 specifications are subject to change without notice

Cat. No. TLK-512

www.inno.sg/tlk