

Miniature Loadcell

WM



SALIENT FEATURES

- ◆ Compact Size
- ◆ Upto 300% overload
- ◆ Ideal for Automotive Industry

Model Number Legend

WM-□□□-□□

1 2 3 4 5 6

1. Series

WM - Miniature Loadcell

2. Loadcell Type

HS: Double 'S'
 CR: Compression Ring
 SC: Single Coloumn
 PC: Pan Cake
 BT: Button Loadcell

3. Sub Type

S: Small
 Blank: Normal

4. Material of Construction

L: Aluminium
 A: Alloy Steel
 SS: Stainless Steel

5. Capacity

10, 20, 50, 100 etc.

6. Units

G: Gram
 K: Kilogram
 T: Tonne

Example:

WM-BTA-1T

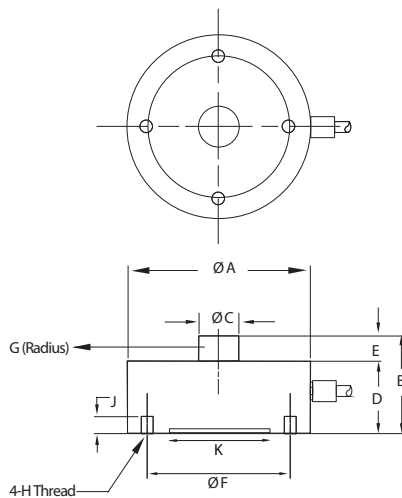
WM Series - BTA Button Type with Alloy Steel (MOC) - 1 Tonne

NOTE: Contact us for models not shown in catalogue.

Series	WM					
Loadcell Type	Button	Customized Button	Double S	Pancake	Single Column	Compression Ring
Capacity	50, 100, 200, 500, 750Kg, 1, 1.5, 2, 3, 5, 7.5T.	1T	10,25,50,100Kg	500Kg,1,2,3,5,7T	5,10,20,30T	2,3T
Nominal Sensitivity	2.00 ± 0.003mv/V		2.00±0.05mv/V	1.5±0.05mv/V	1.5±0.02mv/V	1±0.01mv/V
Input Resistance	390 ± 10 Ω upto 1T, 770 ± 20 Ω 1.5T & Above	390 ± 10 Ω	350 ± 5 Ω	350 ± 2 Ω	350 ± 2 Ω	390 ± 10 Ω
Output Resistance	390 ± 10 Ω upto 1T, 770 ± 7 Ω 1.5T & Above	350 ± 10 Ω	350 ± 3 Ω	350 ± 2 Ω	350 ± 2 Ω	350 ± 2 Ω
Recommended Excitation Voltage	10 - 12VDC					
Maximum Excitation Voltage	15VDC					
Safe Overload	150% F.S					
Ultimate Overload	250% F.S	200% F.S	250% F.S	300% F.S	200% F.S	
Effect of Temperature on Zero(%/°C)	± 0.005		± 0.0002	± 0.0008		
Effect of Temperature on Span (%/°C of Load)	± 0.005		± 0.001	± 0.0008		
Operating Temperature Range(°C)	0 to 60		(-)20 to 70	5 to 50		
Combined Error(as % of Full Scale)	± 0.1 %					
Isolation Resistance (@ 50VDC)	> 1000MΩ					
Protection Class	IP65		IP68	IP50	IP20	IP55
Material of Construction	Stainless Steel and Electroless Nickel Plated Tool Steel		Alloy Steel			
Cable Length	3Mtr	3Mtr	2Mtr	4Mtr	5Mtr	2Mtr

Dimension Drawing

WM-BTA-__

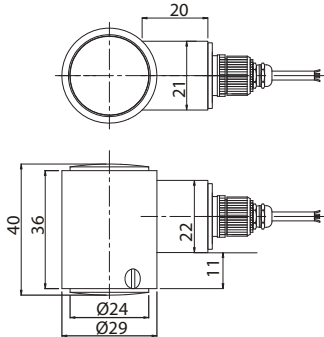


Capacity	50 - 1000Kg	1.5 - 7.5T
A	50	90
B	30	35
C	13	23
D	25	30
E	5	5
F	42	70
G	150	150
H	M4*0.7	M6*1.0
J	6	8
K	34	58
MOC*	SS	SS

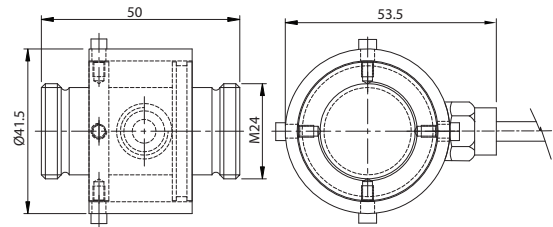
Dimension Drawing

WM

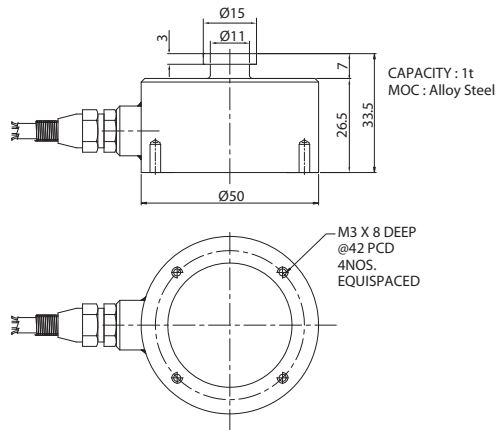
WM-CRA-__



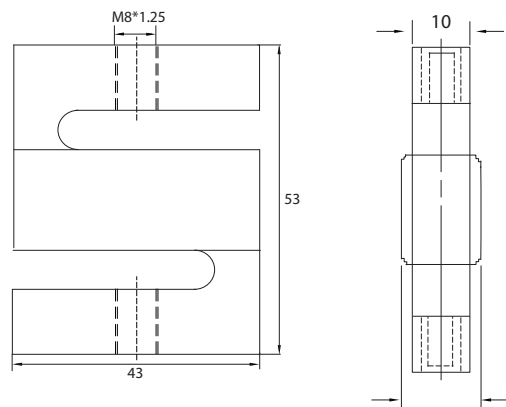
WM-SCA-__



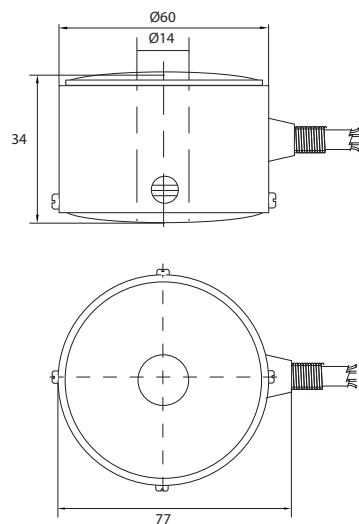
WM-BTSA-__



WM-HSA-__



WM-PCA-__



All dimensions are in mm

- Sensing
- Control
- LoadCells
- Weighing Meters
- Weighing Controllers
- Load Amplifiers
- Automation
- Components

Loadcell Wiring

OUTPUT	EXC+	EXC-	SIG+	SIG-	SHIELD
WM-HS_ _ _	Red	Black	Green	White	Grey
WM-CR_ _ _					
WM-PC_ _ _					
WM-SCA_ _ _	Black	Green	Red	White	Grey
WM-BTSA_ _ _					

- Sensing
- Control
- Loadcells
- Weighing
- Weighing Controllers
- Load Amplifiers
- Automation
- Components

Exclusively Represented by:

Intech Systems Chennai Pvt Ltd
 S-2, Guindy Industrial Estate
 Chennai - 600 032. Ph: 4353 8888
 Email: info@intechchennai.com



www.inno.sg

© INNO, Rights Reserved
 In the interest of continuous product improvement
 specifications are subject to change without notice

Cat. No. WM-517