

# Digital Pressure Gauge

3 Years Battery Life!

# PSI



CE

## SALIENT FEATURES

- ◆ Lasts upto three years
- ◆ Replaceable CR2032 battery
- ◆ 30 second Auto off LCD display
- ◆ User Programmable Pressure Units
- ◆ Accurate readout, Wide viewing angle

## Model Number Legend

**PSI-**    

**1      2    3**

### 1. Series

PSI

### 2. Type

P: Positive (0 ~ 10 bar)

### 3. Pressure Port Type

G: G 1/8", M5

PT: 1/8" PT, M5

NPT: 1/8" NPT, 10-32 UNF

### Example:

PSI-PG

PSI Series - Positive Pressure Type, with G 1/8" (M5) Pressure Port

## Product Highlights

### ◆ Replace Dial Gauges

The PSI is a perfect replacement for the dial gauge, it has a large high contrast 3 digit LCD display and a sampling of 2Hz.

### ◆ Changeable Pressure Units

User programmable pressure units are provided in the unit. The user can switch between:  
MPa, kgf/cm<sup>2</sup>, bar & psi

### ◆ User Replaceable Battery

The PSI sensor is battery powered with an indication for battery level. The battery lasts upto 3 years when the display is used 10 times a day. The display turns off after 30 seconds.

## Application Examples



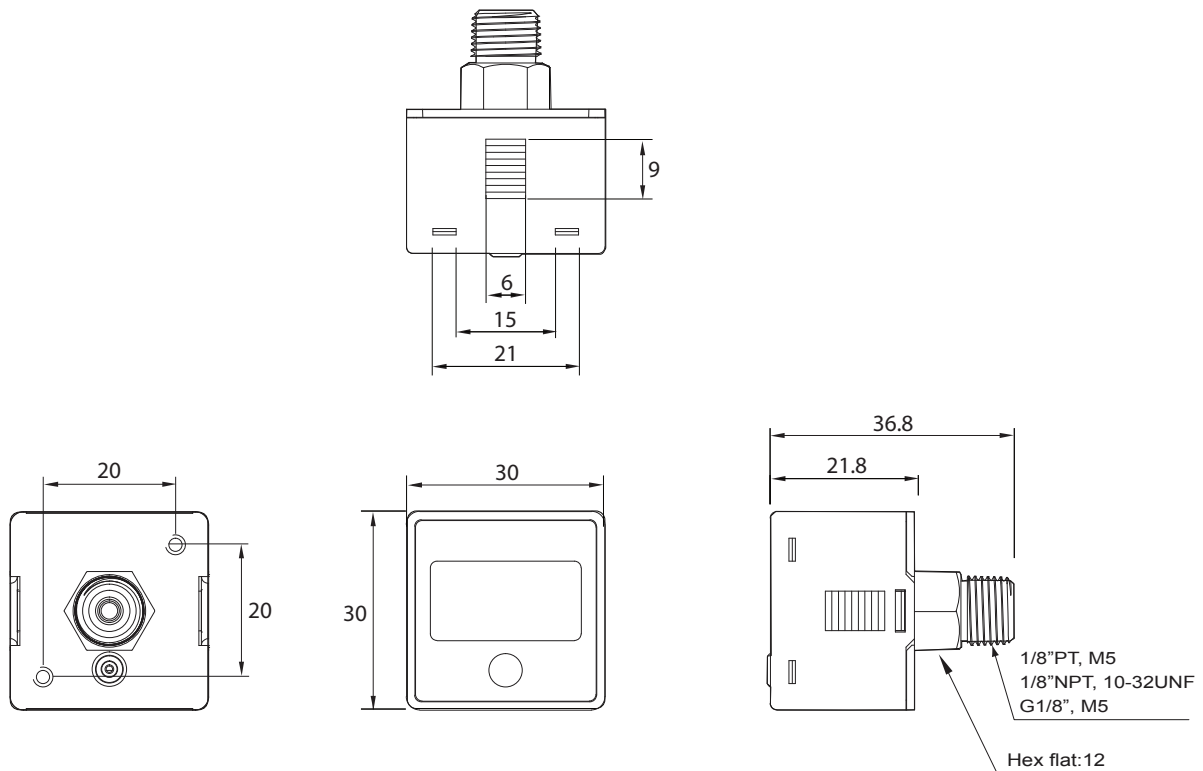
- Replacement for Dial Pressure gauges in FRL, with a easy to read high accuracy digital sensor.
- Digital Pressure indication requirements where power supply is not available.
- Pressure display on machines and cylinders.
- Pressure indication only in the control panel.

## Ratings and Specifications

Type		Positive Pressure (Indication Only)		
Models		PSI-PG	PSI-PPT	PSI-PNPT
Pressure Type		Gauge Pressure		
Pressure Port Type		G 1/8", M5	1/8" PT, M5	1/8" NPT, 10-32 UNF
Rated Pressure Range		0.0 ~ 1.0 MPa		
Display Pressure Range		0.0 ~ 1.0 MPa		
Withstand Pressure		1.5 MPa		
Applicable Fluid		Filtered Air, Non- corrosive & Non- flammable gas		
Pressure Resolution	Mpa	0.001		
	kgf/cm <sup>2</sup>	0.01		
	bar	0.01		
	psi	0.1		
Battery	Type	CR2032 Lithium cell		
	Life	3 years (Display turned on 10 times/ day)		
	Low-power Indication	Available		
	Replaceable	User Replaceable by removing top cover		
Display	Type	3-1/2 digit, 7 segment LCD Display		
	On-interval	Display turns off after 30 sec. of pressing reading button		
Sampling Rate		2 Hz (2 times/ second)		
Pressure Units		User selectable: psi, bar, kgf/cm <sup>2</sup> & MPa		
Repeatability		< ± 0.2% F.S. ± 1 digit		
Shock Resistance		10G, 3 times each in direction of X, Y and Z		
Vibration Resistance		1.5mm amplitude at 10-50 Hz for 2 hours in each direction of X, Y and Z		
Ambient Temperature		Operation: 0° ~ 60°C; Storage: -10° ~ 60°C (non- freezing; non- condensing)		
Ambient Humidity		Operation: 35 ~ 80% RH; Storage: 35 ~ 85% RH (non- condensing)		
Protection Class		IP 65		
Weight		aprox. 40g		
Material		Housing: ABS; Front Label: PC		

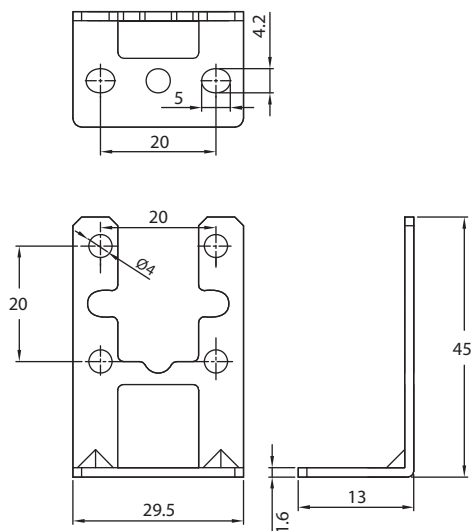
# Sensor Dimension Drawing

PSI



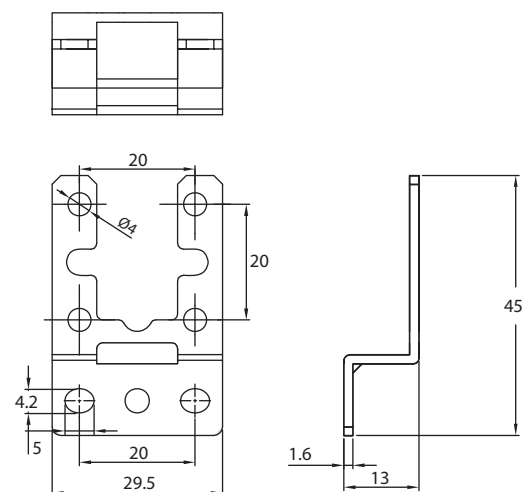
## Top Mounting Bracket

Ordering Code: BT-4



## Side Mounting Bracket

Ordering Code: BT-3



Note: Brackets are not provided along with the sensor and are to be ordered separately.

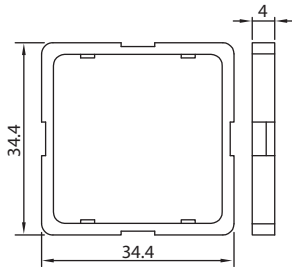
All dimensions are in mm

## Sensor Dimension Drawing

PSI

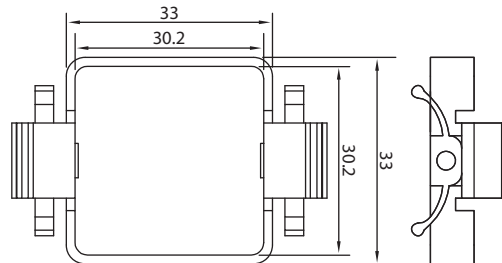
### Panel Adapter

Ordering Code: PA-3



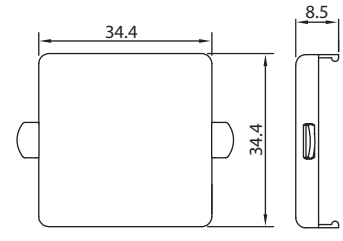
### Panel Adapter

Ordering Code: PA-4



### Protective Cover

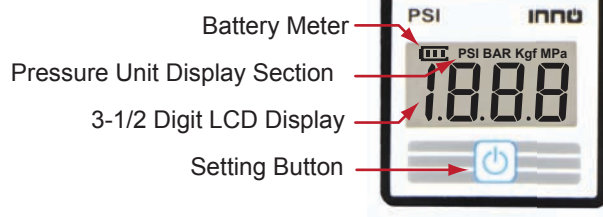
Ordering Code: FPC-2



All dimensions are in mm

Note: Panel adapter and Protective covers are not supplied along with the product and are to be ordered separately. Panel adapter PA-3 & PA-4 are to be ordered together.

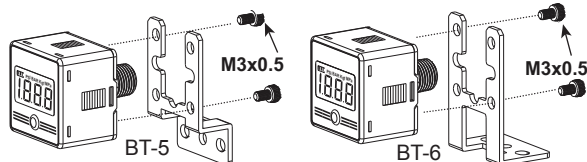
## Nomenclature



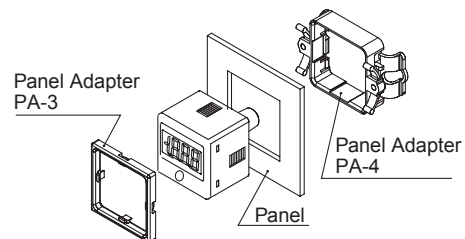
## Mounting and Adjustments

### ◆ Bracket Mounting

Mount the bracket to the body using two M3x5L mounting screws. Use any M3 screw to secure the bracket to the mounting surface. Tightening torque should be between 0.5- 0.7 Nm



### ◆ Panel mounting



Exclusively Represented by:

Intech Systems Chennai Pvt Ltd  
S-2, Guindy Industrial Estate  
Chennai - 600 032. Ph: 4353 8888  
Email: [info@intechchennai.com](mailto:info@intechchennai.com)

**inno**<sup>TM</sup>  
[www.inno.sg](http://www.inno.sg)

© INNO, Rights Reserved  
In the interest of continuous product improvement  
specifications are subject to change without notice

Cat. No. PSI-A12

[www.inno.sg/psi](http://www.inno.sg/psi)