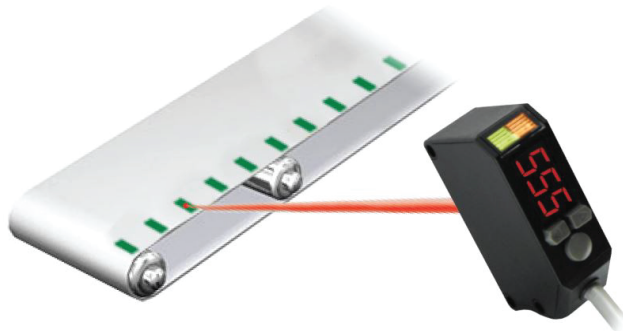


HQ Color Mark Sensor

FX-CM



CE

SALIENT FEATURES

- ◆ 18mm ±2mm
- ◆ Pushbutton Teach
- ◆ RGB LED light source
- ◆ 8 Remote Memory Setting
- ◆ Shock Resistant casing - 50G



Model Number Legend

FX-CM-□□-□
 1 2 3 4 5

1. Series

FX

2. Type

CM: Color Mark

3. Sensing Distance

18: 18 mm

4. Output

N: NPN

P: PNP

5. Connection

2M: 2m Cable

M12J3: M12 Junction Connector with 0.3m extension

#. Accessories included

Mounting Bracket: 1 set

Screws: 1 set

Example:

FX-CM-18P-2M

FX Series - Color Mark Sensor - 18mm sensing distance, PNP - 2 meter cable

NOTE: Contact us for models not shown in catalogue.
 Connector cables are sold separately; look in CCG series catalogue for the same (www.inno.sg/ccg).

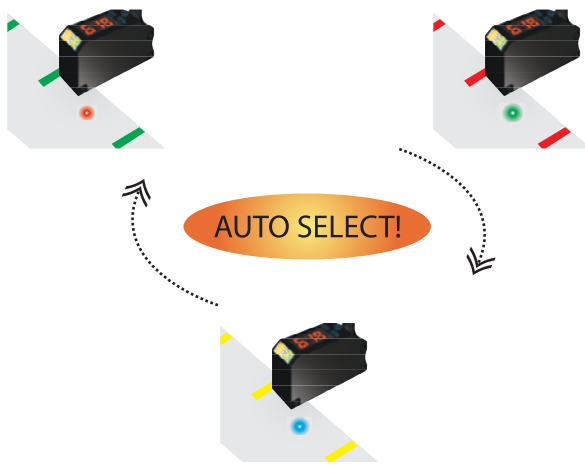
Product Highlights

◆ Automatic Choice of RGB Light Source !

RGB LED light sources are provided in the FX-CM sensors, the internal microcontroller selects the best light source among the RGB LEDs according to the target object.

The sensor continually monitors the contrast ratio between the background and the object to determine the best light source.

Colors that used to be difficult to detect are now done with ease!

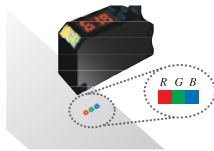


◆ Timer Output !

The FX-CM sensors feature timer output mode. Off Delay/ On Delay/ One Shot Delay modes with increments of 10 msec is available with a ceiling of 10 sec.

◆ Color Mode

In color mode the FX-CM sensors use three LEDs (RGB). The sensor computes the ratio of the the three to determine the color. This ensures accuracy in detection of fast moving objects.



◆ Selectable Response Time

The FX-CM sensors features response time selection via the built in buttons.
 Mark Mode: 0.25/ 0.5/ 1.2 m sec
 Color Mode: 0.8/ 1.6/ 4 m sec

◆ Digital Display & Auto Teach

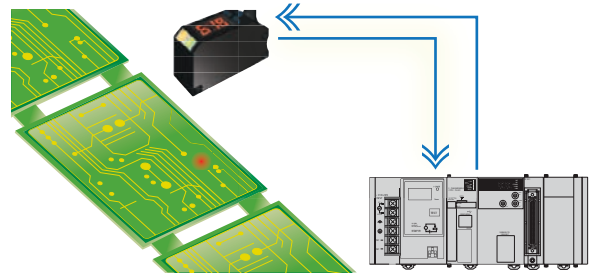
The FX-CM sensors have a built in digital display and threshold buttons for manual teach.

Auto teach function is also made available with One touch and Two touch teach functions.



◆ 8 Remote Access Memory Settings!

The FX-CM sensors have a built in eight step memory which can store eight different color settings. This memory settings can be accessed remotely from a PLC or a Selector Switch by using the 3 additional wires coming out of the sensor (Green, Rose, Yellow).



Memory	Wire Color		
	Green	Rose	Yellow
0	0	0	0
1	0	0	1
2	0	1	0
3	0	1	1
4	1	0	0
5	1	0	1
6	1	1	0
7	1	1	1

◆ Key Lock

The keys can be locked to prevent unauthorised/ unintended intrusions. Push Up and Down keys simultaneously for 3 secs to activate lock; same for unlock.

Ratings and Specifications

FX-CM

Models	FX-CM-18P-2M	FX-CM-18N-2M	FX-CM-18P-M12J3	FX-CM-18N-M12J3
Sensing Distance	18mm ±2mm			
Spot Size	1 x 6mm at 18mm			
Hysteresis*t	H1 - 8; H2 - 6; L - 4			
Response Time	Mark Mode	H1 - 250 µs; H2 - 500 µ Sec; L - 1200 µs (Selectable)		
	Color Mode	H1 - 800 µs; H2 - 1600 µ Sec; L - 4000 µs (Selectable)		
Light Source	Mark Mode	1 Color (Selectable by Teaching)		
	Color Mode	3 Color - RGB LED (Automatic Selection)		
Light Wavelength	Red: 634 nm; Green: 517 nm; Blue: 469 nm			
Sensitivity Adjustment	Pushbutton Teach with fine adjust buttons			
Operation Mode	Light ON / Dark ON selectable			
Supply Voltage	10 - 30 VDC (Ripple Max 10%)			
Current Consumption	max. 40 mA			
Connection	2 meter Cable		M12 Junction connector with 0.3 meter cable	
Control Output	PNP	NPN	PNP	NPN
Control Output Rating	Load Voltage: max. 30 VDC; Load Current: max 100mA; Residual Voltage: NPN- max 1 V, PNP- min (-2.5 V)			
Output Timer Function	Off Delay / On Delay / One Shot Delay (10 m sec increments: 0-990 m sec; 1 sec increment: 1-10 sec)			
Teach	Mark Mode: 2 Point Teach/ Auto Teach; Color Mode: 1 Point Teach			
Memory Function	8 Remote Accessable Memory Setpoints			
Operation Indication	Output Indication - Orange; Sensor On - Green			
Digital Indication	3 Digit Seven Segment Red / Green LED			
Insulation Resistance	20 M Ω at 500 VDC			
Shock Resistance	50 G (500 m/ s ² - X, Y, Z 3 directions)			
Environmental Illuminance	Sunlight: 10,000 lux. max. ; Incandescent Lamp: 3,000 lux. max.			
Ambient Temperature	-25° ~ 55°C (non- freezing; non- condensing)			
Ambient Humidity	35 ~ 90% RH (non- condensing)			
Protection Class	IP67			
Weight	approx. 75 g			
Material	Housing: Heat-resistant ABS; Front Cover: PMMA or equiv.; Button: TEEE or equiv.			

Note:

Sensing distance is given on the basis of test object. The actual sensing distance may vary based on object's color and ambient illumination.

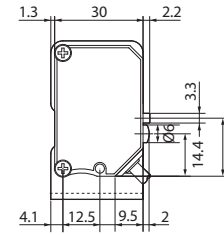
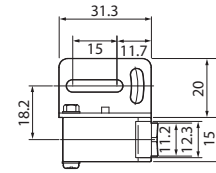
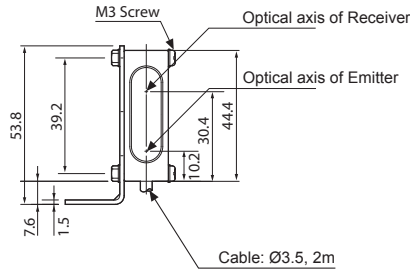
Abbreviations in Hysteresis & Response Time: H1 - High Response time; H2 - Medium Response time; L - Low Response time.

FX-CM-18□-M12J3 models require 8-pin M12 connector cables and are to be purchased seperately; refer CCG catalogue for the same (www.inno.sg/ccg).

Sensor Dimension Drawing

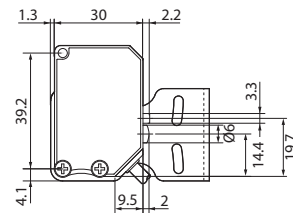
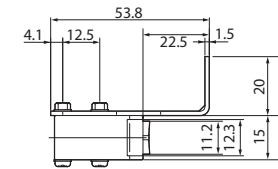
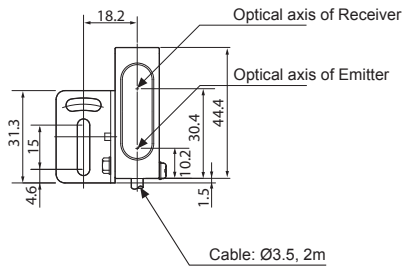
Unit with Clamp in bottom mounting position

- ◆ FX-CM-18P-2M
- ◆ FX-CM-18N-2M
- ◆ FX-CM-18P-M12J3
- ◆ FX-CM-18N-M12J3



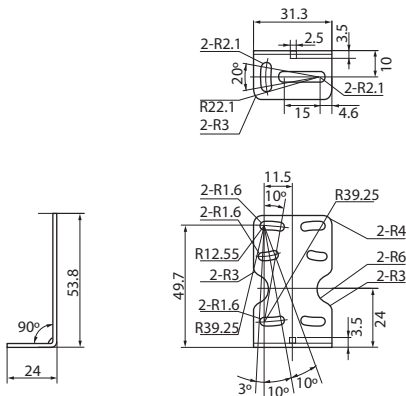
Unit with Clamp in side mounting position

- ◆ FX-CM-18P-2M
- ◆ FX-CM-18N-2M
- ◆ FX-CM-18P-M12J3
- ◆ FX-CM-18N-M12J3



Bracket

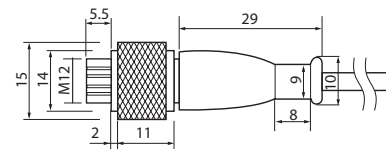
Ordering Code: FX-CM-B



Junction Connector Male

M12, 8 Pin male Connector

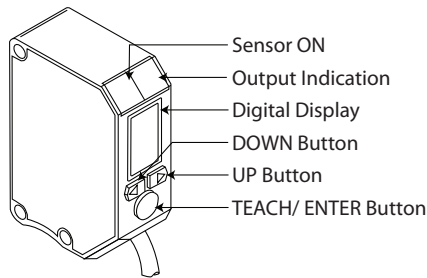
- ◆ FX-CM-18P-M12J3
- ◆ FX-CM-18N-M12J3



All dimensions are in mm

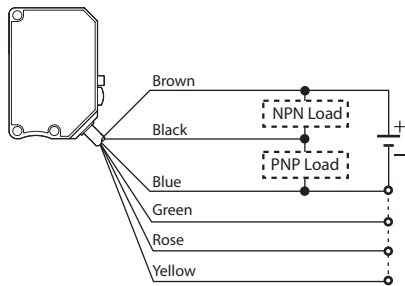
Nomenclature

FX-CM

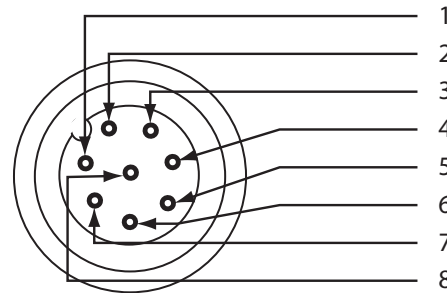


Connection

◆ Cable



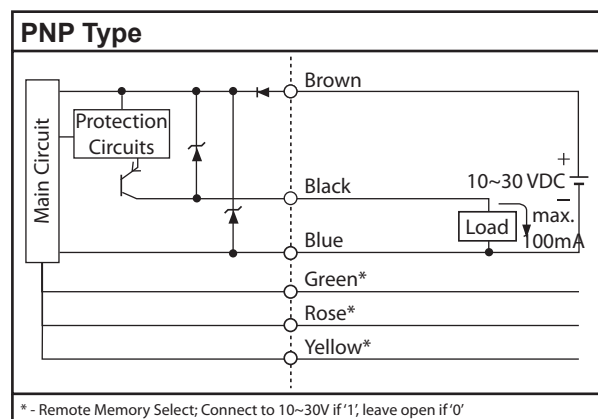
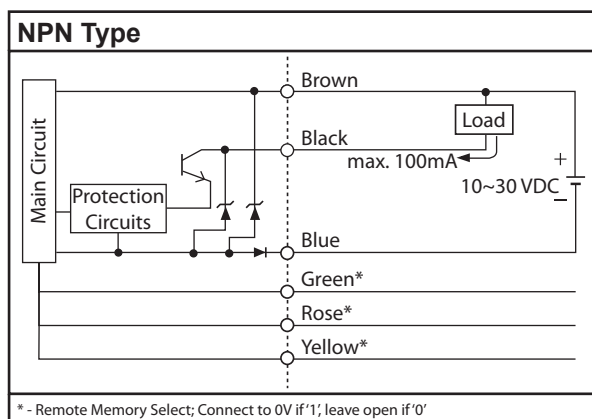
◆ Junction Connector



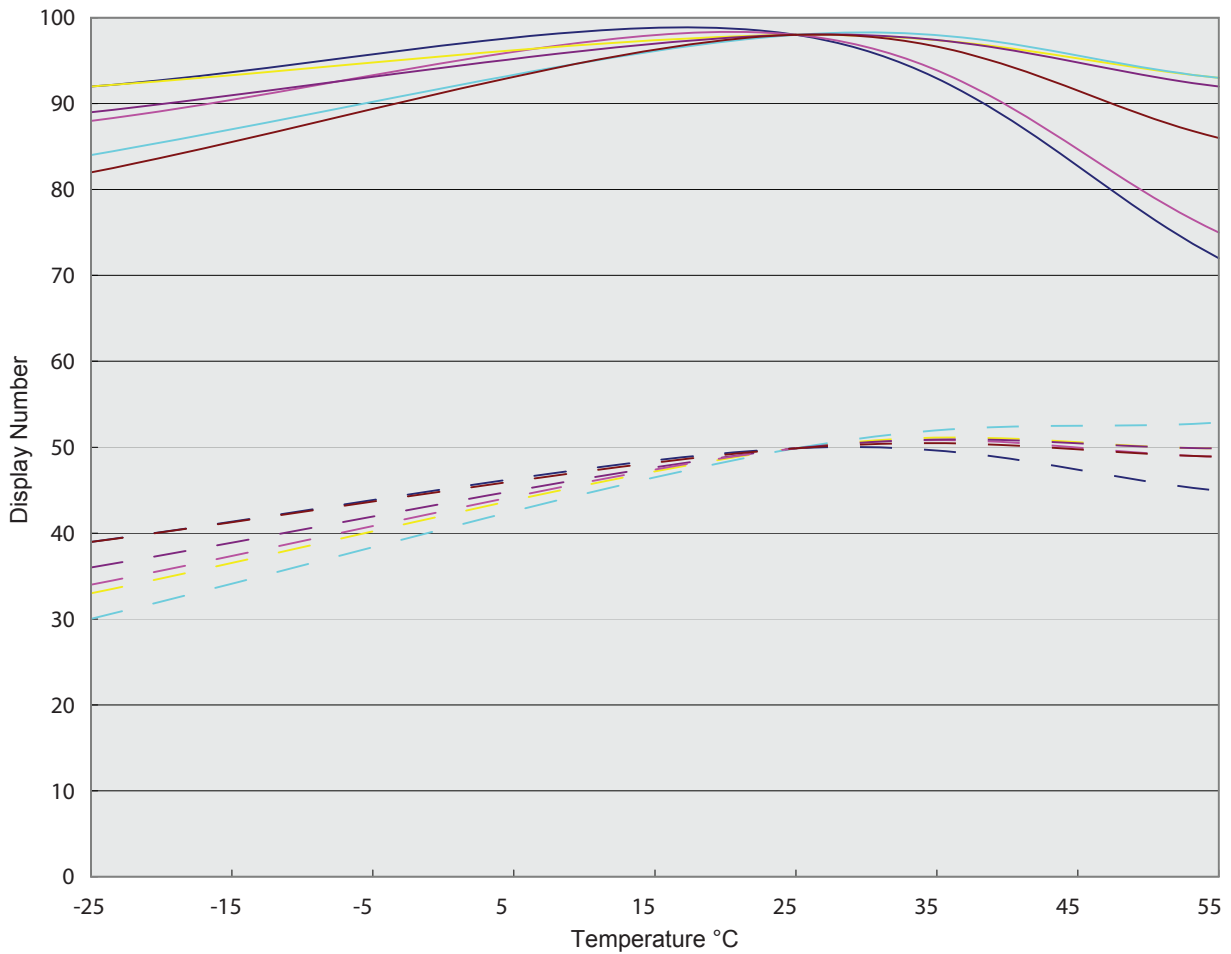
- Brown (1) : DC 10~30V
- Blue (2) : 0V
- Black (3) : Control Output
- Green (4) : Memory Bank Remote Selector

- Rose (5) : Memory Bank Remote Selector
- Yellow (6) : Memory Bank Remote Selector
- (7) : No Connection
- (8) : No Connection

Control Output Diagram



Temperature Drift Characteristics



◆ Color Mode Legend

	Red Target (sample1)
	Red Target (sample2)
	Green Target (sample1)
	Green Target (sample2)
	Blue Target (sample1)
	Blue Target (sample2)

◆ Mark Mode Legend

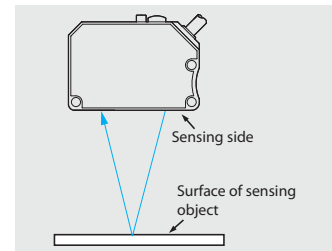
	Red LED (sample1)
	Red LED (sample2)
	Green LED (sample1)
	Green LED (sample2)
	Blue LED (sample1)
	Blue LED (sample2)

Note: This graph represents typical data under standard test conditions and standard sample objects
 Sample 1: 16*20mm Opaque matt object.
 Sample 2: 16*20mm Opaque glossy object

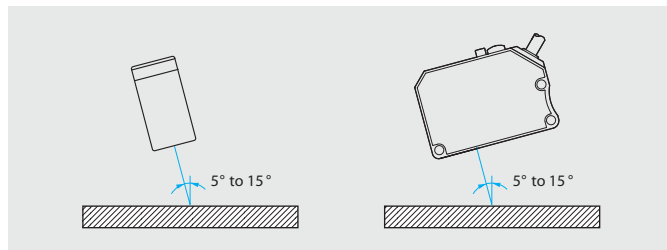
Mounting and Adjustments

FX-CM

Make sure that the sensing side of the sensor is parallel with the surface of the sensing object. Normally, do not incline the sensor towards the sensing object. The sensor is to be placed at least 10mm away from any glossy or reflective surface.



For detection of Glossy Objects, mount the sensor at an angle of 5° to 15°, as shown in the diagrams. This will improve the mark detection capability.



Proximity Sensors

Photoelectric Sensors

Measurement Sensors

Vision & Safety Sensors

Control

Weighing

Automation

Components

Cat. No. FX-CM-712

Exclusively Represented by:

Intech Systems Chennai Pvt Ltd
 S-2, Guindy Industrial Estate
 Chennai - 600 032. Ph: 4353 8888
 Email: info@intechchennai.com

www.inno.sg

© INNO, Rights Reserved
 In the interest of continuous product improvement
 specifications are subject to change without notice