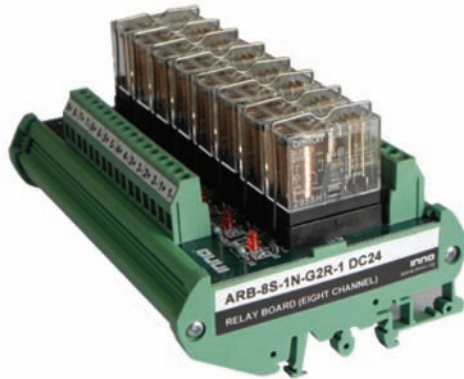


Terminal Relays

Relay Boards with Omron Relay & INNO SSR

ARB



SALIENT FEATURES

- ◆ Jumper Type
- ◆ Compact Size
- ◆ Double Side PCBs
- ◆ Output Indication LED
- ◆ Socket/ Direct Solder Types
- ◆ Omron G2R/L / Inno AS-G2R SSR
- ◆ Phoenix Contact Terminal & Profile

Model Number Legend

ARB - - -

1 2 3 4 5 6

1. Series

ARB

2. Channels

- 1 : Single Channel
- 2 : Two Channel
- 4 : Four Channel
- 8 : Eight Channel
- 16 : Sixteen Channel

3. Socket

- S : With Socket
- D : Direct Solder

4. Changeover

- 1 : Single Changeover
- 2 : Two Changeover

5. Looping

- P : Positive Looping
- N : Negative Looping
- I : Independent Looping
- J : Jumper Type

6. Relay

- | | |
|-------------|-------------|
| G2R-1 DC24 | G2R-2 AC230 |
| G2R-1 AC110 | G2RL-1 DC24 |
| G2R-1 AC230 | G2RL-2 DC24 |
| G2R-2 DC24 | AS-G2R-DD |
| G2R-2 AC110 | AS-G2R-DA |

Example:

ARB-8S-2I-G2R-2 DC24

ARB Series - 8 Channel, With Socket, 2 Change Over, Independent Looping, With Omron G2R-2 DC24 Relay

NOTE: Contact us for models not shown in catalogue

Sensing

Control

Weighing

Automation

Power Supplies

Switching

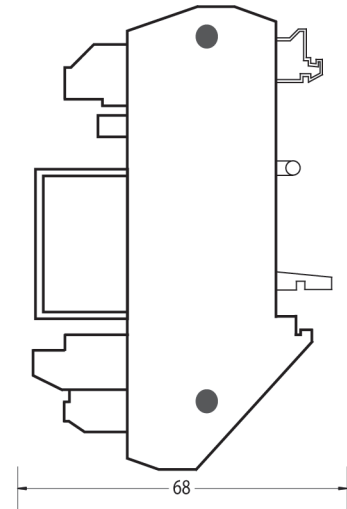
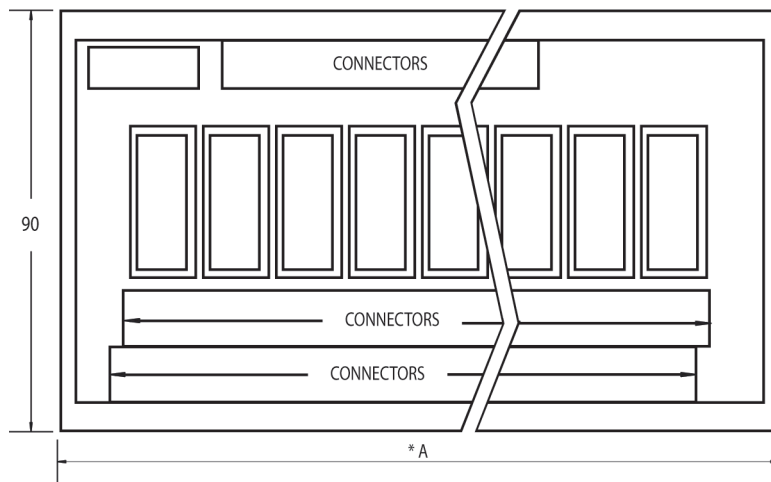
Tower Lamps

Cables & Electrodes

Accessories

Dimension Drawing

ARB

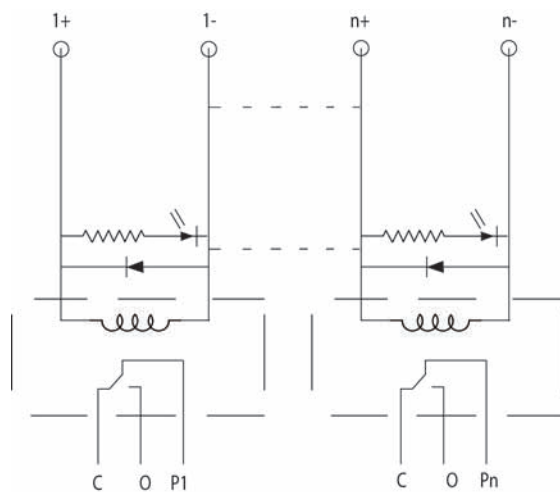


No. of Channel	1	2	4	8	16
*A	23	45	90	135	268

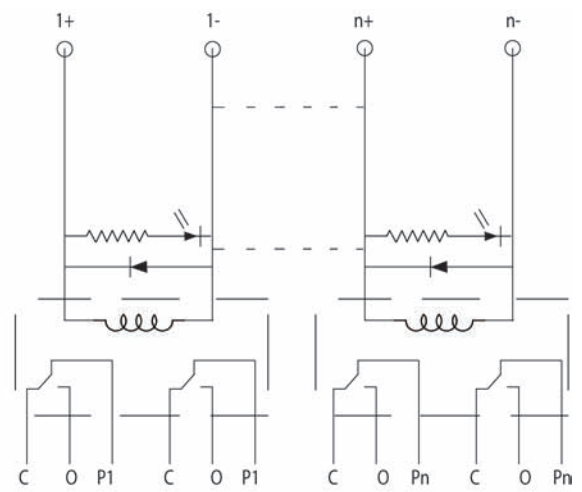
All dimensions are in mm

Electrical Diagram

◆ 1 Change Over Relay Board



◆ 2 Change Over Relay Board



C - Normally Closed O - Normally Open Pn - Pole of nth Relay

Exclusively Represented by:

Intech Systems Chennai Pvt Ltd
S-2, Guindy Industrial Estate
Chennai - 600 032. Ph: 4353 8888
Email: info@intechchennai.com

innoTM
www.inno.sg

© INNO, Rights Rese
In the interest of continuous product improvement
specifications are subject to change without notice

Cat. No. ARB-317

www.inno.sg/arb