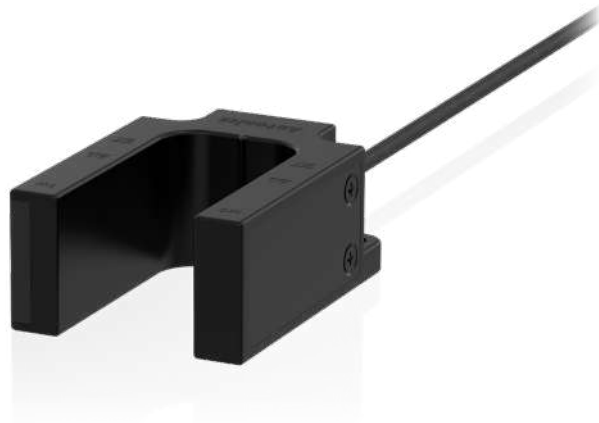


U-Shaped Magnetic Proximity Sensors

MU Series



Features

- Non-voltage magnetic detection method
- Two wiring specifications of cable / cable connector type
- IP67 protection structure (IEC standard)

Specifications

Model	MU-1A-30-□	MU-1B-30-□
Contact	N.O.	N.C.
Operating distance ⁰¹⁾	OFF → ON	± 10 mm
	ON → OFF	± 20 mm
Standard sensing target	Steel plate - a galvanized steel sheet 1.6t	
Operating time	≤ 2 ms	
Release time	≤ 1 ms	
Operating frequency	≤ 500 Hz	
Approval	CE	
Unit weight (package)	Cable type: ≈ 132.5 g (= 172.3 g) Cable connector type: ≈ 107 g (= 147.2 g)	

01) Rated at the ambient temperature of 23 °C. It can be differed up to ±20 % according to the ambient temperature.

Switching voltage	≤ 24 VDC=
Life expectancy	≥ 100 million times (at a resistive load of 5 VDC= 10 mA)
Insulated resistance	≥ 1,000 MΩ (500 VDC= megger)
Dielectric strength	500 VAC~ 50/60 Hz for 1 minute (between all terminals and case)
Vibration	1.5 mm double amplitude at frequency of 10 to 55 Hz (for 1 minute) in each X, Y, Z direction for 2 hours
Shock	100 m/s ² (≈ 10 G) in each X, Y, Z direction for 3 times
Ambient temperature	-10 to 65 °C, storage: -10 to 70 °C (no freezing or condensation)
Ambient humidity	35 to 85 %RH, storage : 35 to 85 %RH (no freezing or condensation)
Protection structure	IP67 (IEC standard)
Connection	Cable type / Cable connector type
Cable	Cable type: Ø 4, 2-wire, 2 m (UL Style 20276, AWG22) Cable connector type: Ø 4, 2-wire, 0.5 m (UL Style 20276, AWG22)
Material	Cover/Case: PC (915R)

[Applied REED SWITCH]

Model	ORD324-10-15 (STANDEX MEDER)
Contact	A (SPST-NO: single pole, single throw, normally open)
Contact rating ⁰¹⁾	≤ 10 W/VA
Voltage	Switching: ≤ 200 VDC=, Breakdown: ≥ 250 VDC=
Current	Switching: ≤ 0.5 A, Carry: ≤ 1.0 A
Ambient temperature	-40 to 125 °C, storage : -65 to 125 °C ⁰²⁾
Material	Body: glass, leads: tin-plated Ni-Fe wire

01) Switching voltage and current should never exceed the wattage rating.

02) Long time exposure at elevated temperature may degrade solderability of the leads.



View product detail