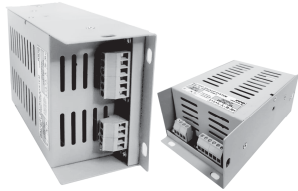




SSB-C22

SSB BATTERY BACKUP SMPS



INSTRUCTION SHEET

Thank you for selecting INNO for your requirement.

This sheet describes the procedure and precautions required for installing and operating the product.

Kindly read this sheet before operating or installing the product. Store the sheet for future reference.

CAUTION FOR SAFETY

- ⓘ Please keep this sheet for review before use of unit.
- ⓘ Please observe the following:

⚠ WARNING
Serious injury may occur if instructions are not followed

⚠ CAUTION
Product failure or injury can occur if instructions are not followed

⚠ WARNING

- This is not a safety product and is not to be used with machinery that requires use of safety control.
- Do not disassemble or modify this unit. It may lead to electric shock/ fire.

Minor burns may occur do not touch the product while ON or immediately after Power OFF.

⚠ CAUTION

- This unit shall not be used outdoors.
- Do not use the unit in places where there are flammable substances.
- Do not use in places where there is corrosive liquids/ environment.
- Please observe the rated specifications in Instruction Sheet.
- Do not use this unit beyond rated power.
- Please check the polarity of power and wrong wiring.
- Do not use this unit in places where there is vibration or impact.
- Do not use water or oil based detergent for cleaning the unit.
- Use a maximum of 1.13Nm torque for tightening the terminal screws.
- Do not use the unit without proper grounding (GND).
- Please process it as industrial waste and dispose responsibly.

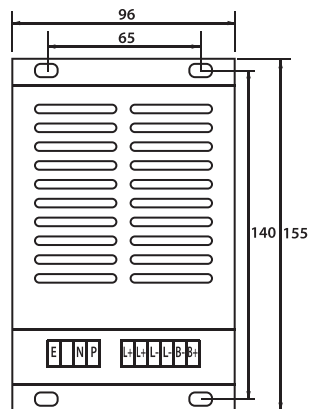
▾ SPECIFICATIONS

*For details on Customized/ Special Models contact Seller

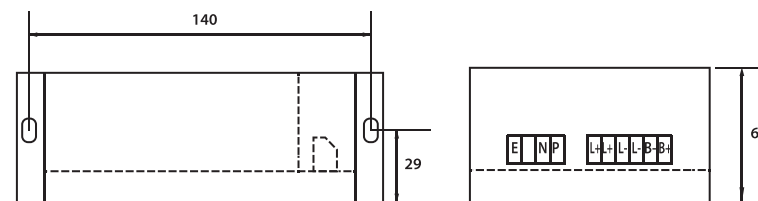
Power Rating	60 Watts	120Watts	120Watts	240Watts
Model	SSB-12DC-60W-T	SSB-12DC-120W-T	SSB-24DC-120W-T	SSB-24DC-240W-T
Output Voltage	12VDC	12VDC	24VDC	24VDC
Rated Current	5A	10A	5A	10A
Efficiency	80%			
Input Voltage	100-230VAC			
Input Frequency	50/60Hz (75 ~ 63Hz)			
Input Current	0.32 (at 230 VAC)	0.65 (at 230 VAC)	0.65 A (at 230 VAC)	1.3A(at230VAC)
Power Factor (Typical)	0.8			
Lekage Current	< 3.5mA			
Inrush Current	40A max.			
Ripple	30mV			
Startup Time	1.61s			
Rise Time	29.53ms (10% - 90%)			
Hold Time	134ms			
Thermal Derating	After 50° C - 2.5%/1° C			
Overload Protection	150% of rated current (3 sec)			
Power Boost	120% of Rated Current			
MTBF	> 15,000 hours			
Shock Resistance	5G - X, Y, Z three directions for 3times to destruction			
Vibration Resistance	10 to 60 Hz, 0.35 mm in X, Y, Z directions for 2 hours			
Ambient Temperature	-40° to 80° C (non-freezing; non-condensing)			

▾ DIMENSIONS

Top View



Side View



All dimensions are in mm

Represented by:

Intech Systems Chennai Pvt. Ltd.
S-2, Guindy Industrial Estate
Chennai - 32. Ph: 044 4353 8888
Email: info@intechennai.com



© Rights Reserved

INSTALLATION NOTES

