

# LED Industrial Tower Lamps

Ø56mm; LED Type with Buzzer

# TBL



## SALIENT FEATURES

- ◆ Ø 56mm
- ◆ 5 Lens Colors
- ◆ High bright LEDs
- ◆ Loud buzzer upto 100db
- ◆ Direct and Pole Mount
- ◆ One to Five Stack Light models
- ◆ Prizm-cut lenses for high brightness

## Model Number Legend

**TBL** -   -      -

1      2 3    4 5 6 7 8    9

1. Series	4. 1 <sup>st</sup> Stack Lens Color	6. 3 <sup>rd</sup> Stack Lens Color	8. 5 <sup>th</sup> Stack Lens Color
TBL	R: Red	R: Red	R: Red
	Y: Yellow	Y: Yellow	Y: Yellow
	G: Green	G: Green	G: Green
2. Type	B: Blue	B: Blue	B: Blue
B: Direct Mount (no pole)	C: Clear	C: Clear	C: Clear
P: Direct Mount			
3. Indication	5. 2 <sup>nd</sup> Stack Lens Color	7. 4 <sup>th</sup> Stack Lens Color	9. Power Supply
B: Buzzer	R: Red	R: Red	24AD: 24VAC/ DC
S: Flicker + Buzzer	Y: Yellow	Y: Yellow	220AC: 90~240 VAC
	G: Green	G: Green	
	B: Blue	B: Blue	
	C: Clear	C: Clear	

### Example:

TBL-BB-RYG-24AD

TBL Series - Direct Mounting Type without Pole, Buzzer - 3 Stack with Red, Yellow, Green - 24V AC/ DC power supply

**NOTE:** Contact us for models not shown in catalogue.

- Sensing
- Control
- Weighing
- Automation
- Power Supplies
- Switching
- Tower Lamps
- Cables & Electrodes
- Accessories

## Product Highlights

◆ **More brightness, less energy, long life!**

Save upto 80% power in comparison with regular bulb type tower lamps; that too with a increase in lux output by upto 40%.

The LED modules have an mean half-life of 30,000hrs and a life span of more than 100,000 hours rendering bulb replacements unnecessary.

TBL series tower lamps have a double cut prizm design with dual layer reflection that ensures a higher degree of light disper- sion in comparison with other tower lapms enabling a high bright and uniform illumination level.



◆ **Buzzer**

BK series tower lamps come fitted with a high volume buzzer with an output of 100dB at 300mm.

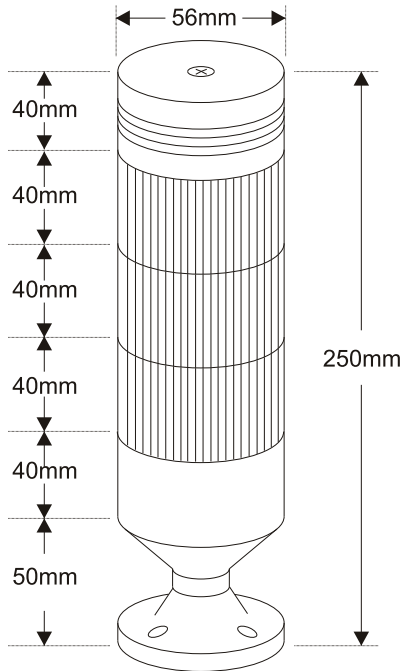


## Ratings and Specifications

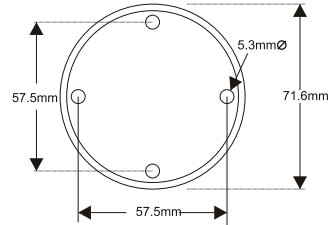
Models	Buzzer Type	TBL-BB- _____	TBL-PB- _____
	Flicker + Buzzer Type	TBL-BS- _____	TBL-PS- _____
Mounting	Base Mount		Base Mount with Pole
Extension Pole	No		Yes
No. of Stacks	1~ 5 (depending on model)		
Lens Color	Red, Green, Yellow (Amber), Blue, Clear (Transparent)		
Power Supply	TBL- _____ -24AD	24V AC/ DC (±10%)	
	TBL- _____ -220AC	200 ~ 240 VAC 50/60Hz (±10%)	
Current Consumption (per stack)	Red	30mA / 0.72W	
	Green	20mA / 0.48W	
	Yellow	20mA / 0.48W	
	Blue	35mA / 0.84W	
	Clear	35mA / 0.84W	
Flash Rate	Aprox.30 flashes per minute		
Buzzer Volume	Fixed "pi" sound; 100dB at 300mm		
Buzzer Current Consumption	30mA / 0.72W		
Vibration Resistance	10 - 55Hz,0.75mm for 2 hours in X, Y, Z directions (destruction)		
Ambient Temperature	Operation: -15°~ 40°C; Storage: -40°~ 70°C (no-n- freezing; no-n- condensing)		
Ambient Humidity	Operation: 45 ~ 85%RH; Storage: 35 ~ 90%RH (no-n- condensing)		
Protection Class	IP 50		
Weight	Base Mount	aprox.LED Module: 43g/ std. module; Base and Unit: 200g	
	Base Mount with Pole	aprox.LED Module: 43g/ std. module; Base and Unit: 200g; Pole: 100g	
Material	Housing: ABS; Lens: Polycarbonate; Pole: Aluminium tube		

# Dimension Drawing

TBL



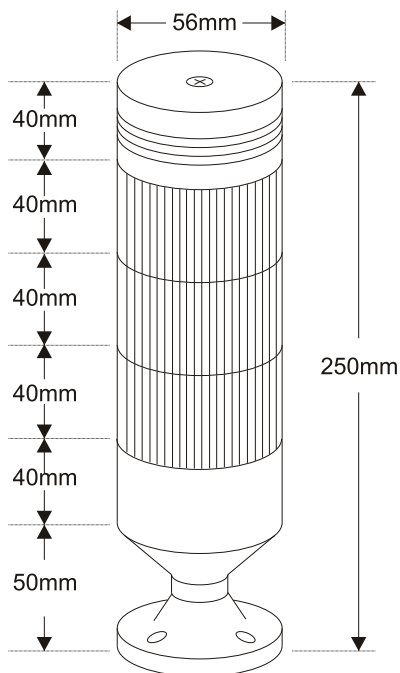
MOUNTING DIMMENSION



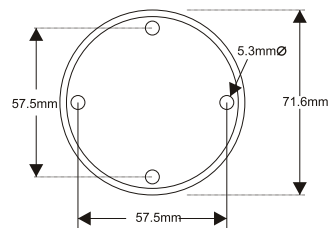
### Electrical Specifications

Operating Voltage	24V DC / AC
-------------------	-------------

COLOUR	CURRENT	WATTAGE
RED	30mA	0.72W
YELLOW	20mA	0.48W
GREEN	20mA	0.48W
BUZZER	10mA	0.24W



MOUNTING DIMMENSION



### Electrical Specifications

Operating Voltage	24V DC / AC
-------------------	-------------

COLOUR	CURRENT	WATTAGE
RED	30mA	0.72W
YELLOW	20mA	0.48W
GREEN	20mA	0.48W
BUZZER	10mA	0.24W

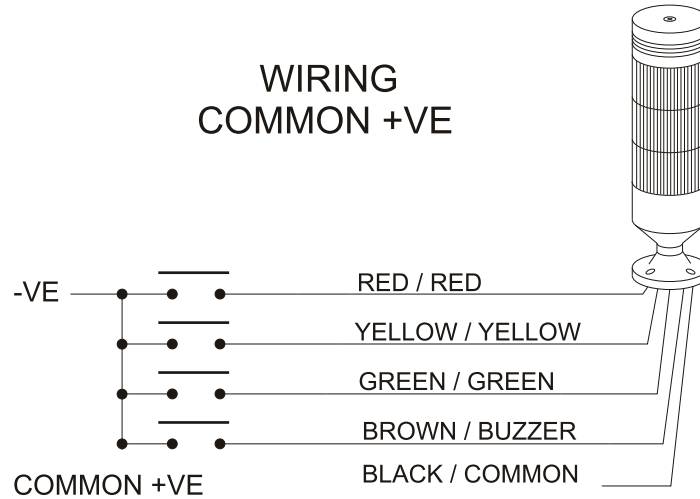
All dimensions are in mm

Connection

- Steady Light + Buzzer Type

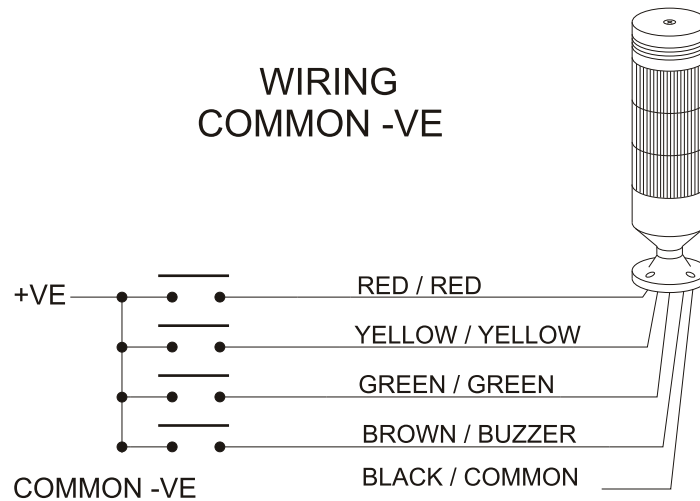
◆ TBL- \_ B- \_ \_ \_ \_ - 24AD

WIRING  
COMMON +VE



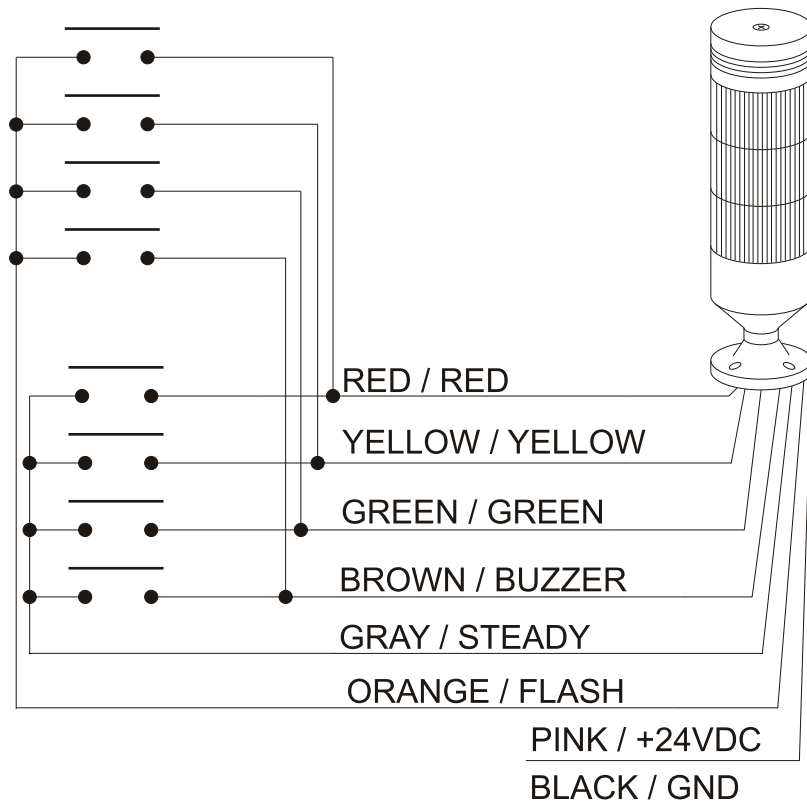
◆ TBL- \_ B- \_ \_ \_ \_ - 24AD

WIRING  
COMMON -VE



• Buzzer + Flicker Type

◆ TBL- \_ S- \_ \_ \_ \_ - \_



Factory Default Stack Color List

1 Stack	: Red	4 Stack	: Red, Yellow, Green, Blue
2 Stack	: Red, Green	5 Stack	: Red, Yellow, Green, Blue, Clear
3 Stack	: Red, Yellow, Green		

Cat. No. TBL-A21

Exclusively Represented by:

Intech Systems Chennai Pvt Ltd  
 S-2, Guindy Industrial Estate  
 Chennai - 600 032. Ph: 4353 8888  
 Email: [info@intechchennai.com](mailto:info@intechchennai.com)

[www.inno.sg](http://www.inno.sg)

© INNO, Rights Reserved  
 In the interest of continuous product improvement  
 specifications are subject to change without notice

- Sensing
- Control
- Weighing
- Automation
- Power Supplies
- Switching
- Tower Lamps
- Cables & Electrodes
- Accessories